



jordan fishwick

WITHINGTON
Wilmslow Road



**Wilmslow Road,
Withington, M20 4LZ**

Guide Price £189,000



The Property

A stylish and well presented larger than average second floor apartment conveniently situated for Withington village centre and located off Wilmslow road offering excellent commuter links to Manchester and Didsbury. Having recently been decorated and re carpeted the accommodation will prove ideal for a couple or buy to let landlord. Comprises: Communal entrance hall, entrance hall, lounge/dining room, separate re-fitted kitchen with gloss light grey doors and appliances, two good size bedrooms and a re-fitted bathroom with a three piece suite and overbath shower. Electric heating and newly installed double glazing are both installed. Private residents off road parking and communal lawned gardens complete the impressive specification. Viewing of this fine apartment is most highly recommended. NO CHAIN.

Directions

M20 4LZ



Google

Map data ©2024 Google

- A two bedroom second floor apartment
- Two double bedrooms
- Located off Wilmslow Road
- Lounge/dining room & separate kitchen
- Newly fitted kitchen and bathroom
- Electric heating & newly installed double glazing
- Ideal first time purchase or buy to let investment
- No chain

Postcode - M20 4LZ

EPC Rating - B

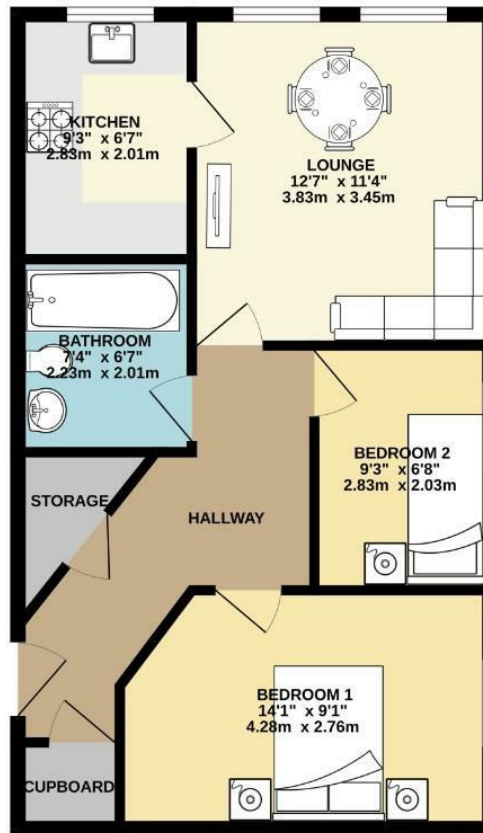
Floor Area - 553.00 sq ft

Local Authority - Manchester City Council

Council Tax - C



GROUND FLOOR
553 sq.ft. (51.4 sq.m.) approx.



TOTAL FLOOR AREA: 553 sq.ft. (51.4 sq.m.) approx.
Measurements are approximate. Not to scale. Illustrative purposes only.
Made with Metropix ©2024



These particulars are believed to be accurate but they are not guaranteed and do not form a contract. Neither Jordan Fishwick nor the vendor or lessor accept any responsibility in respect of these particulars, which are not intended to be statements or representations of fact and any intending purchaser or lessee must satisfy himself by inspection or otherwise as to the correctness of each of the statements contained in these particulars. Any floorplans on this brochure are for illustrative purposes only and are not necessarily to scale.

Offices also at: Wilmslow, Macclesfield, Hale, Sale, Chorlton, Glossop, Manchester & Salford

757-759 Wilmslow Road, Didsbury Village, Manchester

0161 445 4480

didsbury@jordanfishwick.co.uk
www.jordanfishwick.co.uk