



jordanfishwick

WEST DIDSBURY
Clyde Road



Clyde Road, West Didsbury
M20 2HN
 Guide price £675,000



The Property

*** INVESTMENT PROPERTY *** AN IMPRESSIVE VICTORIAN SEMI DETACHED COMPRISING OF FIVE FLATS (4 x 1 Bed & 1 x Studio) LOCATED WITHIN A SHORT STROLL OF THE EVER POPULAR BURTON ROAD AND THE METROLINK. 3293 sq ft overall. Fully let on AST's and currently generating £2,675 pcm. The communal areas include a generous basement with separate access at the rear of the building and stairways, hallways and landings giving access to all flats. To the ground floor is a one bedroom flat to the front and a studio with separate access at the rear of the building, there are a further two one bedroom flats on the first and second floors, with a further flat being a duplex enjoying living space over both floors, Gas central heating is

installed with all flats having separate boilers and there is partial uPVC double glazing. Externally there is parking to the front and a communal garden to the rear.

Directions

Leaving the office along Wilmslow Road in a northerly direction continue straight through the lights at the junction with Barlow Moor Road and at the next set of lights take a left onto Lapwing Lane. At the next set of lights continue straight over and then take your third left into Clyde Road, where the property can then be found after a short distance on the right.



- Investment Property
- Five flats
- 4 x 1 Bed & 1 x Studio
- Current income £2,675 pcm
- 3,293 sq ft overall
- Great location in West Didsbury
- Generous basement
- Parking & communal garden
- Gas central heating
- Partial uPVC double glazing

Postcode - M20 2HN

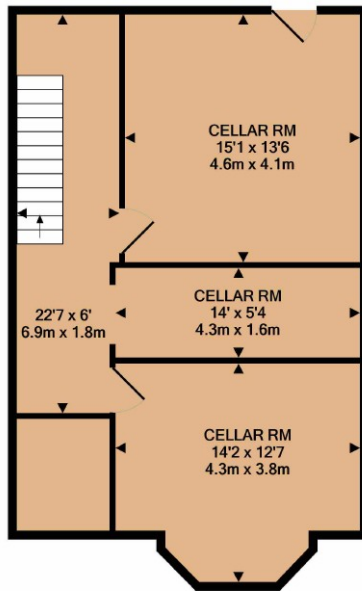
EPC Rating -

Floor Area - 3293 sq ft

Local Authority - Manchester City Council

Council Tax - Band A





BASEMENT LEVEL
APPROX. FLOOR
AREA 592 SQ.FT.
(55.0 SQ.M.)



GROUND FLOOR
APPROX. FLOOR
AREA 961 SQ.FT.
(89.3 SQ.M.)



1ST FLOOR
APPROX. FLOOR
AREA 873 SQ.FT.
(81.1 SQ.M.)



2ND FLOOR
APPROX. FLOOR
AREA 866 SQ.FT.
(80.5 SQ.M.)

TOTAL APPROX. FLOOR AREA 3293 SQ.FT. (305.9 SQ.M.)
Measurements are approximate. Not to scale. Illustrative purposes only
Made with Metropix ©2021



These particulars are believed to be accurate but they are not guaranteed and do not form a contract. Neither Jordan Fishwick nor the vendor or lessor accept any responsibility in respect of these particulars, which are not intended to be statements or representations of fact and any intending purchaser or lessee must satisfy himself by inspection or otherwise as to the correctness of each of the statements contained in these particulars. Any floorplans on this brochure are for illustrative purposes only and are not necessarily to scale.

Offices also at: Wilmslow, Macclesfield, Hale, Sale, Chorlton, Glossop, Manchester & Salford

757-759 Wilmslow Road, Didsbury Village, Manchester, M20

0161 445 4480

didsbury@jordanfishwick.co.uk
www.jordanfishwick.co.uk