

Rolfe East



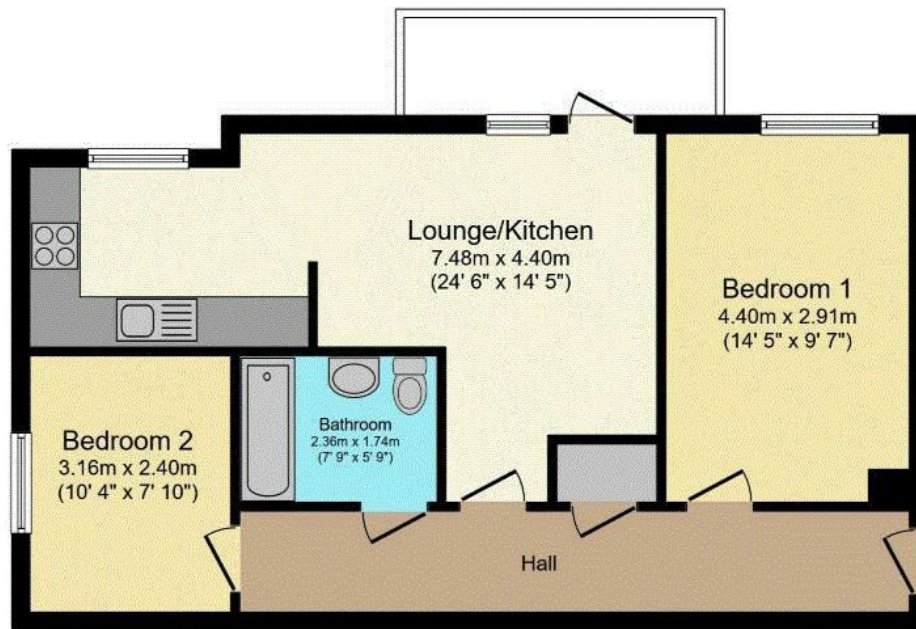
Gunnersbury Lane, Acton, W3 8HF

£2,000 Per Calendar Month

- Two Double Bedrooms
- Private Balcony
- Lift Access
- Approx. 5 Minutes Walk to Acton Town Tube
- Available Mid May
- Furnished

66 High Street, Acton, W3 6LE
020 8993 7755

actonlettings@rolfe-east.com
<https://www.rolfe-east.com/>



Floor Plan

Total floor area 59.0 sq. m. (635 sq. ft.) approx

This floor plan is for illustrative purposes only. It is not drawn to scale. Any measurements, floor areas (including any total floor area), openings and orientation are approximate. No details are guaranteed, they cannot be relied upon for any purpose and they do not form part of any agreement. No liability is taken for any error, omission or misstatement. A party must rely upon its own inspection(s). Plan produced for Purple Bricks. Powered by www.focalagent.com

Viewings

Viewings by arrangement only.
Call 020 8993 7755 to make an appointment.

EPC Rating:

B

Energy Efficiency Rating		
	Current	Potential
Very energy efficient - lower running costs		
(92 plus) A		
(81-91) B	81	81
(69-80) C		
(55-68) D		
(39-54) E		
(21-38) F		
(1-20) G		
Not energy efficient - higher running costs		
England & Wales	EU Directive 2002/91/EC 