

Rolfe East



Court Way, 3

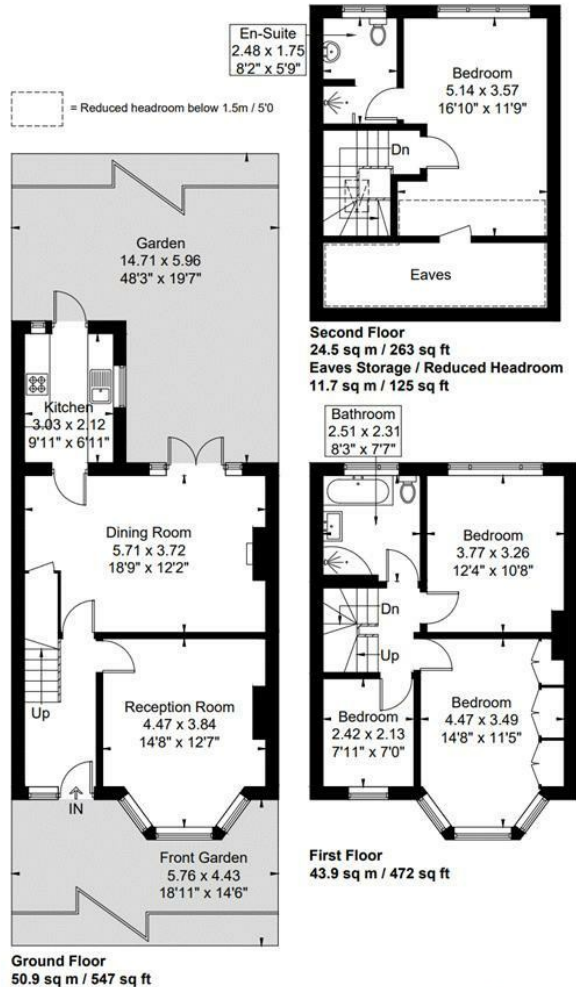
Price Guide £800,000

- Family Home
- Convenient Location
- Four Bedrooms
- Close to Transport Links
- Two Bathrooms
- Large Rear Garden



Court Way

Approximate Gross Internal Area = 119.3 sq m / 1282 sq ft
Eaves / Reduced Headroom = 11.7 sq m / 125 sq ft
Total = 131 sq m / 1407 sq ft



Although every attempt has been made to ensure accuracy, all measurements are approximate.
The floorplan is for illustrative purposes only and not to scale.
© www.prspective.co.uk

Viewings

Viewings by arrangement only. Call 020 8993 7755 to make an appointment.

Council Tax Band

E

EPC Rating:

D

Energy Efficiency Rating

	Current	Potential
Very energy efficient - lower running costs		
(92 plus) A		
(81-91) B		
(69-80) C		
(55-68) D	58	77
(39-54) E		
(21-38) F		
(1-20) G		
Not energy efficient - higher running costs		
England & Wales	EU Directive 2002/91/EC	