

The Skylarks

Frampton








There's no place like home

Putting customers first

Building homes is what Amplus does, and we do it exceptionally well across the Midlands and beyond. Over a number of years, we've seen what people really like about the homes we build and we build on that experience.

So you know that behind the kerb appeal, there's a structure that meets the highest professional standards. You know that every detail has been checked and inspected. That's experience!

Finally, **location, location, location**. You will see, we try to find the very best spot for every taste, as we believe in quality homes, in quality places.





Home is a place for everything

Your home should fit around your life. So whether you're a budding chef, artist or just like to relax, you'll find room for whatever you're passionate about.

Home is for making memories

Your home is your haven. From the minute you unlock your front door, a new chapter in your life begins.

Home is where your family grows

From baby to young adult, having a space in which your family can grow together is so important. That's why we build more than just homes.

Home is a warm place

Whether you're curling up on the sofa or having a family meal, your home will keep you warm and content all year round.

Homes built to last

There's no feeling like stepping into your new home. Whatever your plans are for tomorrow, we build our homes with a long and happy future in mind.





Home is where love resides

Nestled in Lincolnshire, Frampton is a village that seamlessly blends history, nature and modern convenience. Just three miles south of Boston, this charming parish offers a peaceful retreat while keeping you well-connected with the wider region.

The best of both worlds

Frampton enjoys a prime location along the A16, providing easy access to Boston and beyond. The village retains a strong sense of community while benefiting from nearby amenities and transport links. Whether you're looking for a quiet escape or a well-connected base, Frampton offers the best of both worlds.

A place steeped in history

The stunning limestone 12th-century landmark St. Mary's Church is just one of the historical treasures Frampton has to offer. On the other side of the village, St. Michael's and All Angels Church, built in 1860 as a private chapel for the Tunnard family, remains an elegant Grade II listed building and a chapel of ease today.

Nature on your doorstep

For those who like nature, Frampton Marsh is a true haven. This expansive RSPB nature reserve is a magnet for wildlife, offering breathtaking landscapes and an abundance of birdwatching opportunities. With part of the marsh also managed by the Lincolnshire Wildlife Trust, the area provides a perfect setting for peaceful walks, photography and outdoor exploration.



The Skylarks Frampton

Development Plan



- Affordable rent
- Developers homes

2 bedroom homes

- The Wagtail

3 bedroom homes

- The Bunting
- The Dove

4 bedroom homes

- The Robin

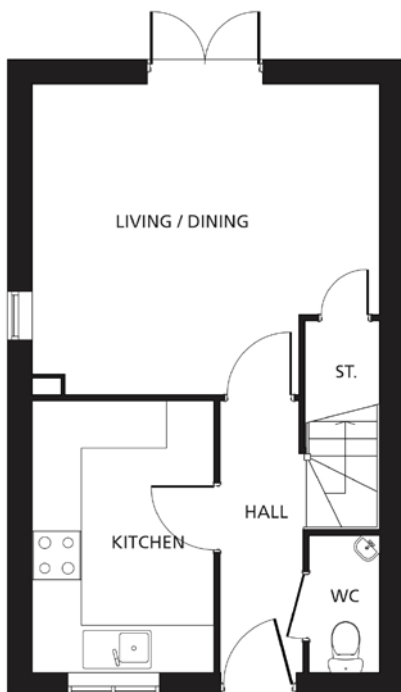
Facilities

- Substation
- Bin Collection Point
- Pumping Station

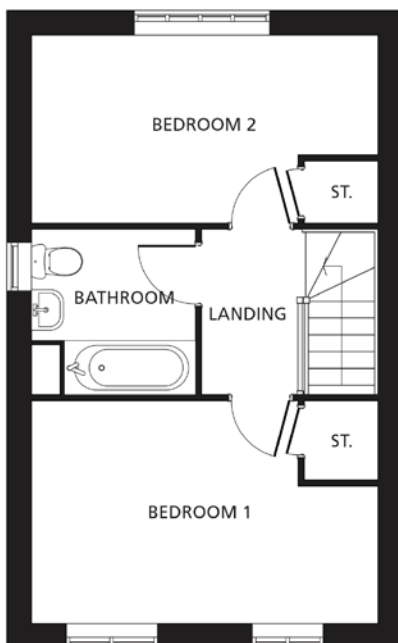
This development layout plan depicts the intended layout and development mix at the time of publication. However, those intentions may change and a purchaser cannot rely on the details shown on this plan. Landscaping shown is only indicative. Any queries should be raised through the conveyancing process.



The Wagtail



Ground Floor



First Floor

Kitchen

2.40m x 3.57m
7'10" x 11'8"

Living/Dining

4.56m x 4.08m
14'11" x 13'4"

Bedroom 1

3.05m x 3.99m
10'0" x 13'1"

Bedroom 2

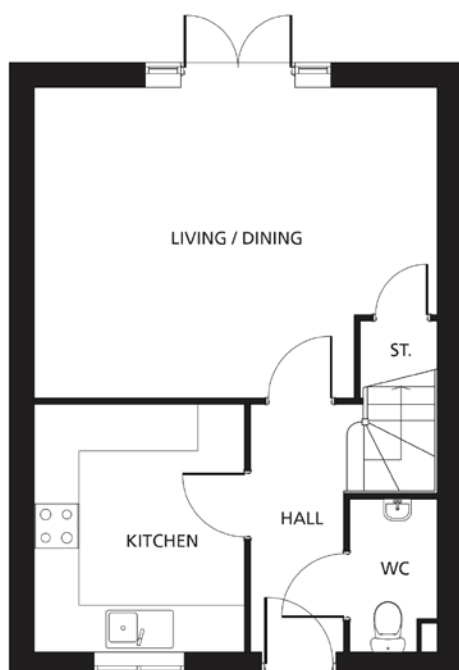
4.56m x 2.49m
14'11" x 8'2"

**All dimensions are
maximum sizes**

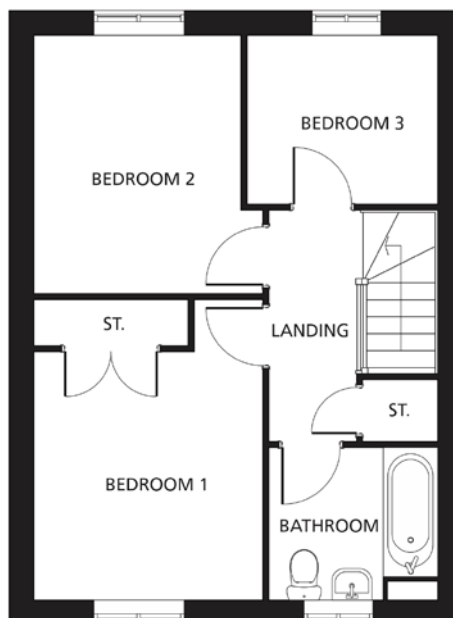
Dimensions stated are to be used as guidance only and should not be used as a basis for furnishings, furniture or appliance spaces. Dimensions for such purposes must be verified against actual site measurements. Please note the handing of plots may vary from the floor plans shown. All images are used for illustrative purposes only and are representative only. They may not be the same as the actual home you purchase and the specification may differ. Images may be of a slightly different model of home, individual features such as windows, brick, carpets, paint and other material colours may vary and also the specification of fittings may vary. Any furnishings and furniture shown are not included in any sale. Please check with a member of our sales team for details of the exact specification for each property type and the associated prices.



The Bunting



Ground Floor



First Floor

Kitchen

2.80m x 3.30m

9'2" x 10'9"

Living/Dining

5.35m x 4.12m

17'6" x 13'6"

Bedroom 1

3.05m x 3.30m

10'0" x 10'9"

Bedroom 2

2.76m x 3.43m

9'0" x 11'3"

Bedroom 3

2.53m x 2.26m

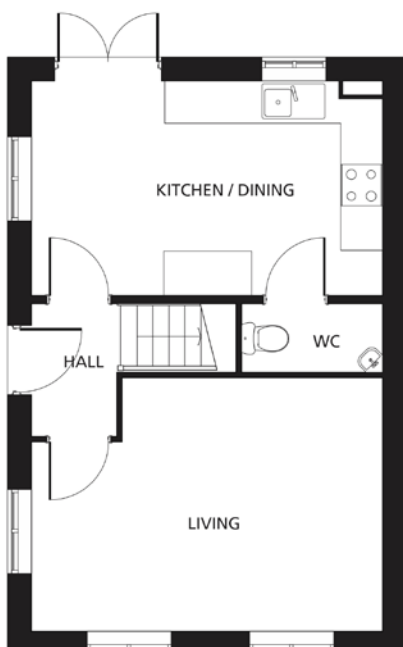
8'3" x 7'4"

**All dimensions are
maximum sizes**

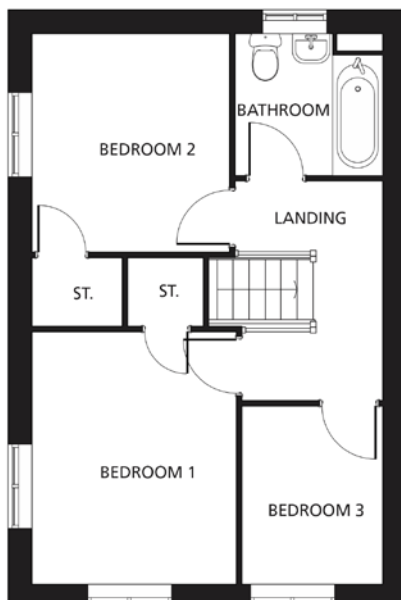
Dimensions stated are to be used as guidance only and should not be used as a basis for furnishings, furniture or appliance spaces. Dimensions for such purposes must be verified against actual site measurements. Please note the handing of plots may vary from the floor plans shown. All images are used for illustrative purposes only and are representative only. They may not be the same as the actual home you purchase and the specification may differ. Images may be of a slightly different model of home, individual features such as windows, brick, carpets, paint and other material colours may vary and also the specification of fittings may vary. Any furnishings and furniture shown are not included in any sale. Please check with a member of our sales team for details of the exact specification for each property type and the associated prices.



The Dove



Ground Floor



First Floor

Kitchen/Dining
5.01 m x 3.06m
16'5" x 10'0"

Living Room
5.01m x 3.44m
16'5" x 11'3"

Bedroom 1
2.93m x 3.61m
9'7" x 11'10"

Bedroom 2
2.83m x 3.11m
9'3" x 10'2"

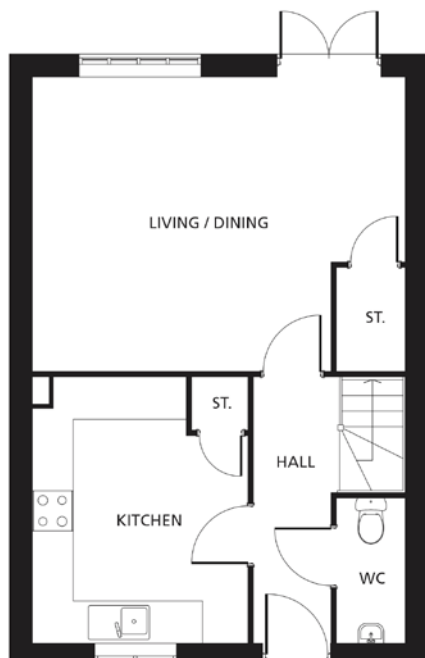
Bedroom 3
2.02m x 2.40m
6'7" x 7'10"

**All dimensions are
maximum sizes**

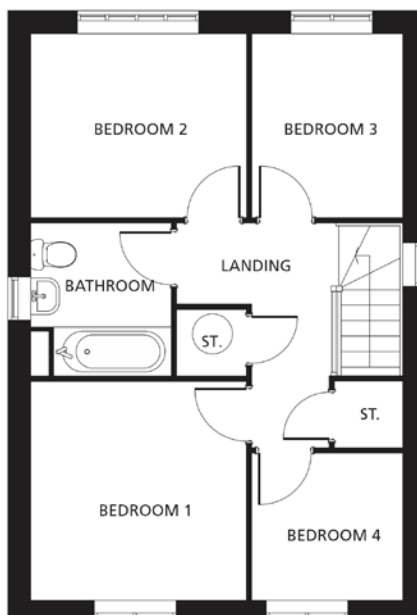
Dimensions stated are to be used as guidance only and should not be used as a basis for furnishings, furniture or appliance spaces. Dimensions for such purposes must be verified against actual site measurements. Please note the handing of plots may vary from the floor plans shown. All images are used for illustrative purposes only and are representative only. They may not be the same as the actual home you purchase and the specification may differ. Images may be of a slightly different model of home, individual features such as windows, brick, carpets, paint and other material colours may vary and also the specification of fittings may vary. Any furnishings and furniture shown are not included in any sale. Please check with a member of our sales team for details of the exact specification for each property type and the associated prices.



The Robin



Ground Floor



First Floor

Kitchen

3.17m x 3.90m
10'4" x 12'9"

Living/Dining

5.46m x 4.31m
17'10" x 14'1"

Bedroom 1

3.16m x 3.20m
10'4" x 10'5"

Bedroom 2

3.16m x 2.72m
10'4" x 8'11"

Bedroom 3

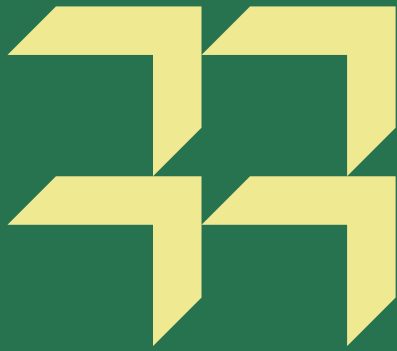
2.24m x 2.72m
7'4" x 8'11"

Bedroom 4

2.24m x 2.16m
7'4" x 7'2"

Dimensions stated are to be used as guidance only and should not be used as a basis for furnishings, furniture or appliance spaces. Dimensions for such purposes must be verified against actual site measurements. Please note the handing of plots may vary from the floor plans shown. All images are used for illustrative purposes only and are representative only. They may not be the same as the actual home you purchase and the specification may differ. Images may be of a slightly different model of home, individual features such as windows, brick, carpets, paint and other material colours may vary and also the specification of fittings may vary. Any furnishings and furniture shown are not included in any sale. Please check with a member of our sales team for details of the exact specification for each property type and the associated prices.

All dimensions are maximum sizes



Our commitment to you

Before you move

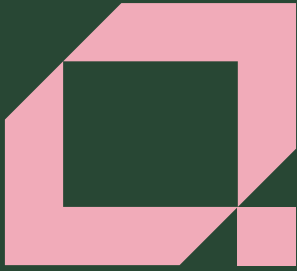
- Our friendly sales team will provide you with support and guidance throughout the home buying process
- At pre-reservation stage you will be shown details of the appearance and location of your chosen new home, together with all relevant surrounding information
- The reservation agreement will set out the key terms of your home purchase, including the reservation period, purchase price and other important information
- We will go through the specification and layout of your home and details of any pre-contractual information to enable you to make an informed decision
- We will inform you of your main point of contact who will assist you with information during your reservation and after you have moved into your new home
- We will regularly communicate with you to keep you informed of the progress of your new home and your dedicated point of contact will respond to any queries you may have
- We want to make your move as enjoyable as possible and our welcoming and knowledgeable staff will be with you every step of the way to provide a service that is tailored to you and your needs.

When/after you move in

- On the day you move a dedicated sales advisor will welcome you to your new home
- A detailed homecare booklet will be provided to help you settle in
- Shortly after you have moved in, we will make courtesy calls/visits to ensure you are happy with your new surroundings
- Your new home is covered by an NHBC or similar industry regulated 10-year insurance scheme covering the fabric and structural integrity of your new home.


We do value your comments and feedback so we can continually improve and enhance our service. If you have any comments you'd like to share with us, please contact: 0345 601 9095 or newhomessales@amplius.co.uk







For sales enquiries

Amplius, K2, Timbold Drive, Kents Hill,
Milton Keynes MK7 6BZ

 0345 601 9095

 newhomessales@amplius.co.uk

 amplius.co.uk

Further information relating to Amplius can be accessed via our
website: amplius.co.uk

The information contained within this booklet is offered in good faith
and is believed to be correct. However, accuracy is not guaranteed.
No liability will attach to Amplius, their representatives or agents in
respect of any statement contained here.