**£775 pcm**

£179 pw

MARKETED BY

**Newton Fallowell, Grantham**68 High Street, Grantham,  
Lincolnshire, NG31 6NR

## Letting details

Let available date: **Now**Deposit: **£894** Let type: **Long term**Furnish type: **Unf****Request details** **Call agent**

PROPERTY TYPE

**Flat**

BEDROOMS

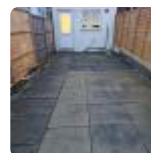
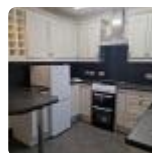
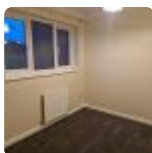
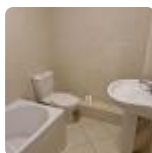
**2**

BATHROOMS

**1**

SIZE

**Ask agent**

 No floorplan

## Key features

- 2 Bed Semi detached
- Breakfast Kitchen
- Family bathroom
- Gas Central Heating
- Holding Fee £178
- Single Bedroom
- Living room
- Enclosed Rear Garden
- Close to town Center
- EPC C

## Description

We are pleased to offer for let this 2 bedroom semi detached house within walking distance of Grantham town Centre. Briefly comprising of Entrance Hallway, Lounge, Breakfast Kitchen, 2 Bedrooms and Family Bathroom with Shower over Bath. The property also offers off road parking and large fully enclosed rear gardens.

EPC: C

Holding Fee £178 to be deducted from the first months rent

Minimum 6 month tenancy.

"Please note these are draft particulars awaiting final approval from the Landlord, therefore the contents within may be subject to change and must not be relied upon as an entirely accurate description of the property. Although these particulars are thought to be materially correct, their accuracy cannot be guaranteed and they do not form part of any contract. All services and appliances have not and will not be tested"

EPC rating: C.

COUNCIL TAX 

Band: A

PARKING 

Yes

GARDEN 

Private garden

ACCESSIBILITY 

Ask agent



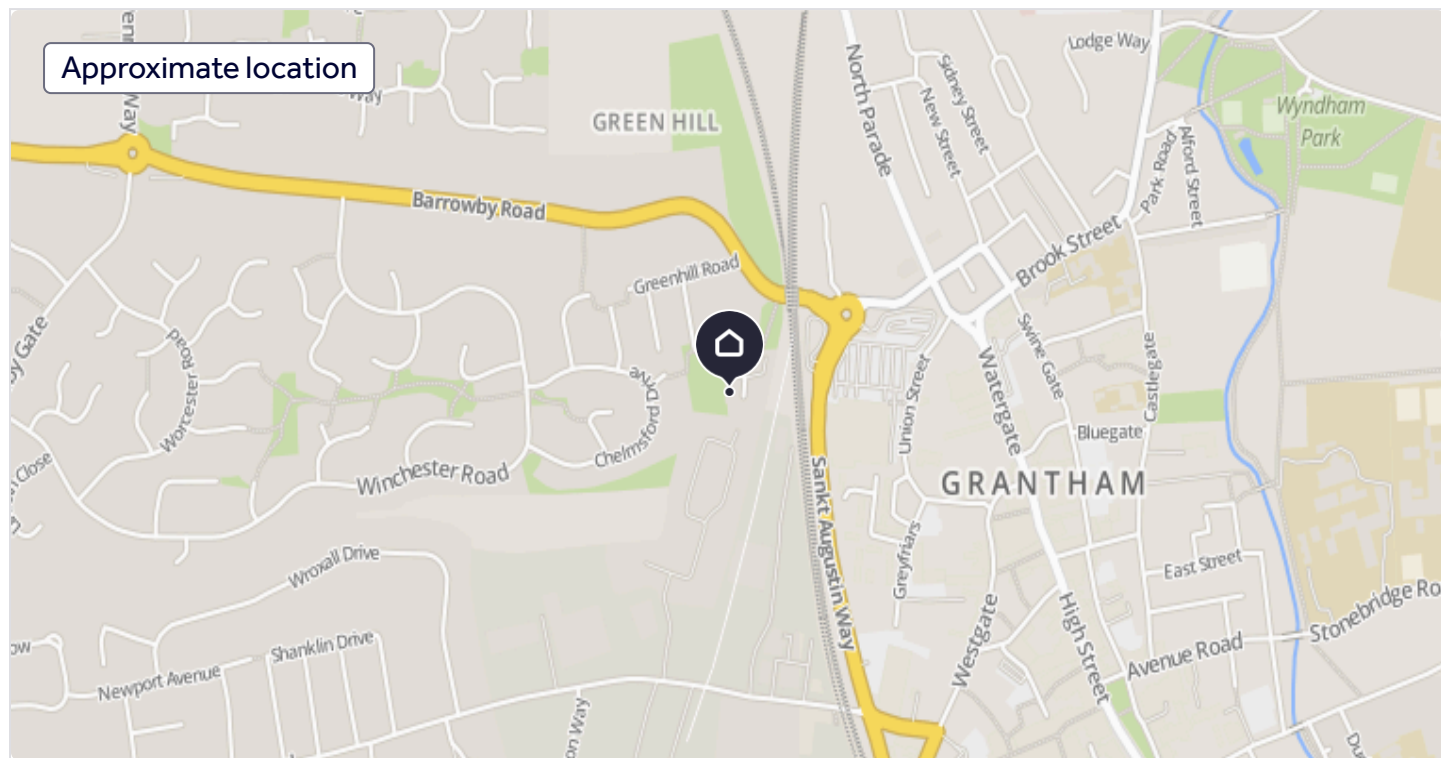
Energy Performance Certificate



Utilities, rights & restrictions



## Campbell Close, Grantham, Grantham, NG31



Add an important place to see how long it'd take to get there from our property listings.

 \_\_mins driving to your place



Broadband speed



### About Newton Fallowell, Grantham

68 High Street, Grantham, Lincolnshire, NG31 6NR



Industry affiliations:



A house move is so important, so shouldn't you entrust it to a well established independent company with the back-up that only a professional and experienced organisation can bring?

[Read more](#)



[View our properties to rent](#)

[Find out more about us](#)

## Notes



These notes are private, only you can see them.

Add your thoughts on this property...

**Disclaimer** - Property reference P1978. The information displayed about this property comprises a property advertisement. Rightmove.co.uk makes no warranty as to the accuracy or completeness of the advertisement or any linked or associated information, and Rightmove has no control over the content. This property advertisement does not constitute property particulars. The information is provided and maintained by **Newton Fallowell, Grantham**. Please contact the selling agent or developer directly to obtain any information which may be available under the terms of The Energy Performance of Buildings (Certificates and Inspections) (England and Wales) Regulations 2007 or the Home Report if in relation to a residential property in Scotland.

\*This is the average speed from the provider with the fastest broadband package available at this postcode. The average speed displayed is based on the download speeds of at least 50% of customers at peak time (8pm to 10pm). Fibre/cable services at the postcode are subject to availability and may differ between properties within a postcode. Speeds can be affected by a range of technical and environmental factors. The speed at the property may be lower than that listed above. You can check the estimated speed and confirm availability to a property prior to purchasing on the broadband provider's website. Providers may increase charges. The information is provided and maintained by **Decision Technologies Limited**.

\*\*This is indicative only and based on a 2-person household with multiple devices and simultaneous usage. Broadband performance is affected by multiple factors including number of occupants and devices, simultaneous usage, router range etc. For more information speak to your broadband provider.

Map data ©**OpenStreetMap** contributors.

## Download the Rightmove app



## Resources



## Search



## Locations



## Rightmove





[Site map](#)

[Help](#)

[Cookies](#)

[Safety and Security](#)

[Terms of Use](#)

[Privacy Policy](#)



Copyright © 2000-2026 Rightmove Group Limited. All rights reserved. Rightmove prohibits the scraping of its content. You can find **further details here**.