**£850 pcm**

£196 pw ⓘ

Added today

MARKETED BY

Newton Fallowell, Grantham68 High Street, Grantham,
Lincolnshire, NG31 6NR

Letting details

Let available date: **28/02/2025**Deposit: **£980** ⓘLet type: **Long term**Furnish type: **Part****Request details** **Call agent**

PROPERTY TYPE

Flat

BEDROOMS

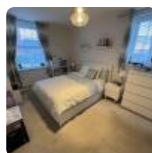
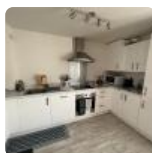
2

BATHROOMS

1

SIZE

Ask agent

 No floorplan

+4

Key features

- Ground Floor Apartment
- Two Double Bedrooms
- Built in Wardrobes
- GCH, UPVC Double Glazing
- Holding Deposit £196*
- Open Plan Lounge/Kitchen
- Kitchen with Appliances
- Allocated Parking
- EPC Rating B
- Bathroom with Shower

Description

Ground Floor Apartment with Entrance Hall, Open Plan Kitchen/Dining and Lounge. Bathroom with Shower, Two Double Bedrooms, Part Furnished with all white goods. One allocated parking space. EPC Rating B. GCH, D/Glazed. Holding Deposit £196* No Pets, Non Smokers. Minimum 6 month Tenancy. "Please note these are draft particulars awaiting final approval from the Landlord, therefore the contents within may be subject to change and must not be relied upon as an entirely accurate description of the property. Although these particulars are thought to be materially correct, their accuracy cannot be guaranteed and they do not form part of any contract. All services and appliances have not and will not be tested" EPC rating: B.

COUNCIL TAX 

Band: A

PARKING 

Permit

GARDEN 

Private garden

ACCESSIBILITY 

Ask agent



Energy Performance Certificate



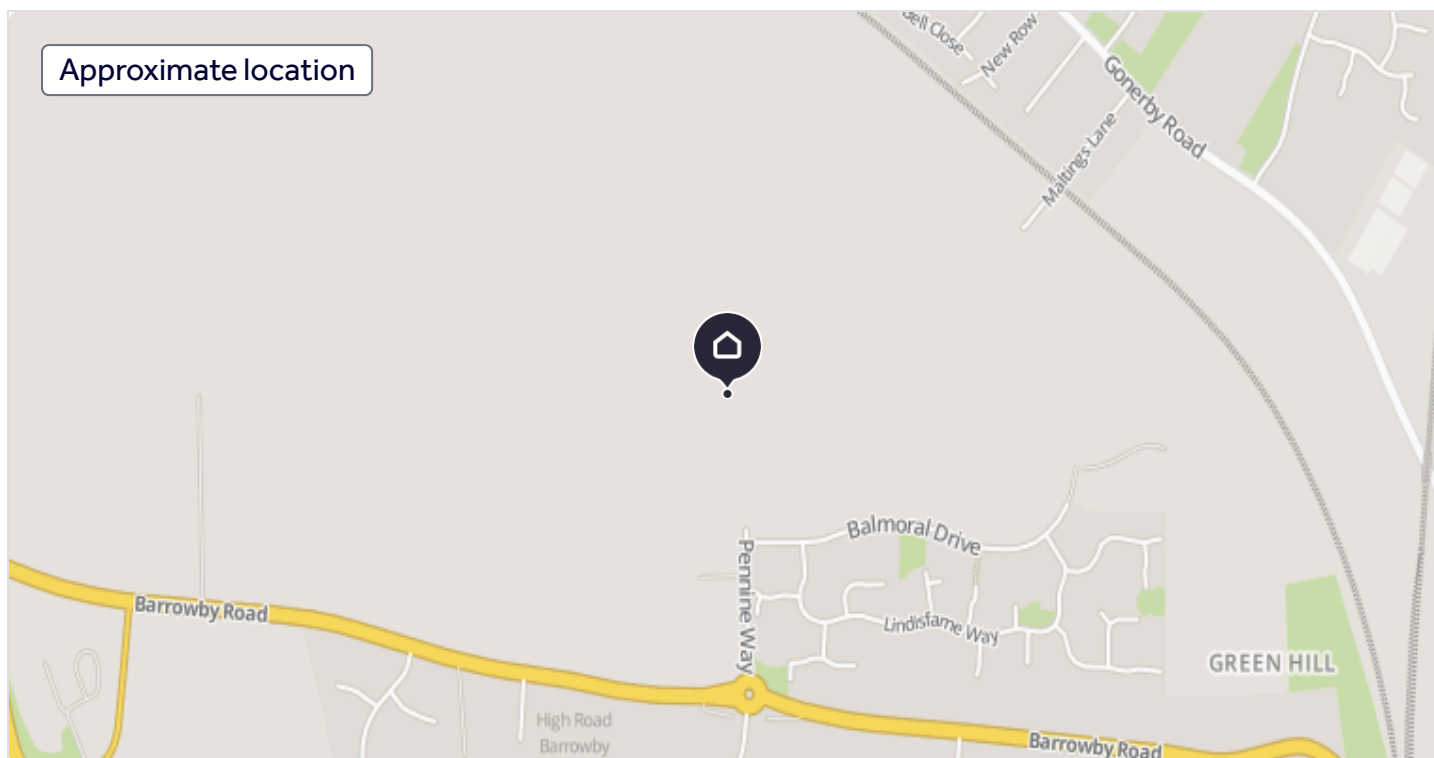
Utilities, rights & restrictions



31 Jan 2025

Miss Nisreen Fansa (Jan 31, 2025,
5:42 PM)

Penryhn Way, Grantham, NG31



Add your favourite places to see how long it takes you to get there.

 __mins driving to your place



Broadband speed



About Newton Fallowell, Grantham



68 High Street, Grantham, Lincolnshire, NG31 6NR

Industry affiliations:



A house move is so important, so shouldn't you entrust it to a well established independent company with the back-up that only a professional and experienced organisation can bring?



[View our properties to rent](#)

[Find out more about us](#)

Notes



These notes are private, only you can see them.

Add your thoughts on this property...

Disclaimer - Property reference P4191. The information displayed about this property comprises a property advertisement. Rightmove.co.uk makes no warranty as to the accuracy or completeness of the advertisement or any linked or associated information, and Rightmove has no control over the content. This property advertisement does not constitute property particulars. The information is provided and maintained by **Newton Fallowell, Grantham**. Please contact the selling agent or developer directly to obtain any information which may be available under the terms of The Energy Performance of Buildings (Certificates and Inspections) (England and Wales) Regulations 2007 or the Home Report if in relation to a residential property in Scotland.

*This is the average speed from the provider with the fastest broadband package available at this postcode. The average speed displayed is based on the download speeds of at least 50% of customers at peak time (8pm to 10pm). Fibre/cable services at the postcode are subject to availability and may differ between properties within a postcode. Speeds can be affected by a range of technical and environmental factors. The speed at the property may be lower than that listed above. You can check the estimated speed and confirm availability to a property prior to purchasing on the broadband provider's website. Providers may increase charges. The information is provided and maintained by [Decision Technologies Limited](#).

**This is indicative only and based on a 2-person household with multiple devices and simultaneous usage. Broadband performance is affected by multiple factors including number of occupants and devices, simultaneous usage, router range etc. For more information speak to your broadband provider.

Map data ©[OpenStreetMap](#) contributors.

Download the Rightmove app



Resources



Search



Locations



Rightmove



Professional



[Site map](#)

[Help](#)

[Cookies](#)

[Safety and Security](#)

[Terms of Use](#)

[Privacy Policy](#)





Issuer Newton Fallowell

Document generated Thu, 30th Jan 2025 16:03:46 GMT

Document fingerprint 7c34c47492b6441550ebeb62a9b3b85d

Parties involved with this document

Document processed	Party + Fingerprint
Fri, 31st Jan 2025 5:47:29 GMT	Miss Nisreen Fansa - Signer (9e1b90fbe134b98a3d7690f72e9e8031)

Audit history log

Date	Action
Thu, 30th Jan 2025 16:03:47 GMT	Envelope generated by Grantham Lettings159.242.100.154
Thu, 30th Jan 2025 16:03:47 GMT	Document generated with fingerprint 7c34c47492b6441550ebeb62a9b3b85d159.242.100.154
Thu, 30th Jan 2025 16:04:54 GMT	Sent the envelope to Miss Nisreen Fansa (nisreenfa89@gmail.com) for signing159.242.100.154
Thu, 30th Jan 2025 16:04:54 GMT	Document emailed to nisreenfa89@gmail.com35.179.161.241
Thu, 30th Jan 2025 16:31:05 GMT	Miss Nisreen Fansa opened the document email.66.249.81.1
Thu, 30th Jan 2025 21:43:00 GMT	Miss Nisreen Fansa opened the document email.104.28.38.185
Fri, 31st Jan 2025 5:45:21 GMT	Miss Nisreen Fansa opened the document email.66.249.81.6
Fri, 31st Jan 2025 5:45:46 GMT	Miss Nisreen Fansa viewed the envelope176.205.22.14
Fri, 31st Jan 2025 5:45:57 GMT	Miss Nisreen Fansa viewed the envelope213.104.143.68
Fri, 31st Jan 2025 5:47:29 GMT	Miss Nisreen Fansa signed the envelope176.205.22.14
Fri, 31st Jan 2025 5:47:29 GMT	This envelope has been signed by all parties176.205.22.14
Fri, 31st Jan 2025 5:47:30 GMT	Miss Nisreen Fansa viewed the envelope176.205.22.14