



**3 bedroom
Detached
Bungalow
located in
Clacton-on-
Sea.**

Guide Price
£425,000 - £450,000

Find us on..



JOHN ALEXANDER
ESTATE AGENTS

Wyndham Crescent Clacton-on-Sea CO15 6LH

FULL DESCRIPTION

OVERVIEW

GUIDE PRICE £425,000 TO £450,000

Completely renovated throughout, this impressive home on Wyndham Crescent offers a bright and spacious open plan living and dining area measuring 7.88m x 3.87m and 7.88m x 3.36m, with wooden flooring flowing seamlessly through the main spaces. The property features three bedrooms, including a generous master with en-suite, plus a luxurious high-spec shower room. Additional highlights include a utility room, large skylights, and bi-fold doors opening to the garden, creating a modern and stylish home ready to move into.

STEP INSIDE

Step inside this beautifully renovated home where modern design meets spacious living. From the moment you enter the hallway, measuring 4.11m x 2.91m, you'll notice the attention to detail and the seamless flow of wooden flooring throughout the main living areas, creating a warm and contemporary feel.

The heart of the home is the impressive open-plan kitchen/diner and living area, spanning an incredible 7.88m x 3.87m for the kitchen/diner and 7.88m x 3.36m for the living space. This expansive area is flooded with natural light thanks to large skylights and bi-fold doors, making it perfect for entertaining or relaxing. The kitchen is fitted to a high specification, featuring integrated AEG appliances including a microwave, oven, hob, and a sleek extractor fan built into the ceiling. A central island provides additional workspace and a stylish focal point. Adjacent to the kitchen is a practical utility room measuring 3.56m x 2.34m, ideal for laundry and extra storage.

The property offers three well-proportioned bedrooms. Bedroom 1 is 4.11m x 3.02m and benefits from its own modern en-suite, designed for comfort and convenience. Bedroom 2 is generously sized at 4.53m x 3.55m, while Bedroom 3 measures 2.65m x 1.94m, perfect as a guest room or home office.

The shower room is a true highlight, finished to an exceptional standard with a walk-in rainfall shower, contemporary fixtures, and elegant wood-effect cabinetry, creating a spa-like experience.

Every inch of this property has been thoughtfully renovated, offering a fresh, modern aesthetic throughout. With its spacious layout, high-spec finishes, and prime location in Wyndham Crescent, this home is ready to move straight into.

STEP OUTSIDE

This property offers both front and rear outdoor spaces that are ready for you to transform into your dream gardens. Whether you envision a lush lawn, vibrant flower beds, or a stylish patio for entertaining, these areas provide a true blank canvas for you to put your own personal stamp on.

The front of the property features a spacious driveway with ample room to accommodate several cars.



3



2



C



EPC



TBC



THE LOCATION

Nestled in a quiet residential area, Wyndham Crescent offers a desirable location within the popular seaside town of Clacton-on-Sea. This address benefits from excellent local amenities, including shops, schools, and healthcare facilities, all within easy reach. The property is just a short drive from Clacton's vibrant town centre, where you'll find a range of restaurants, leisure activities, and the famous Clacton Pier.

For commuters, the location provides convenient access to the A133 and A120, linking to Colchester and the wider Essex region. Clacton-on-Sea railway station is nearby, offering regular services to London Liverpool Street. Outdoor enthusiasts will appreciate the proximity to beautiful beaches and coastal walks, making this an ideal spot for both relaxation and recreation.





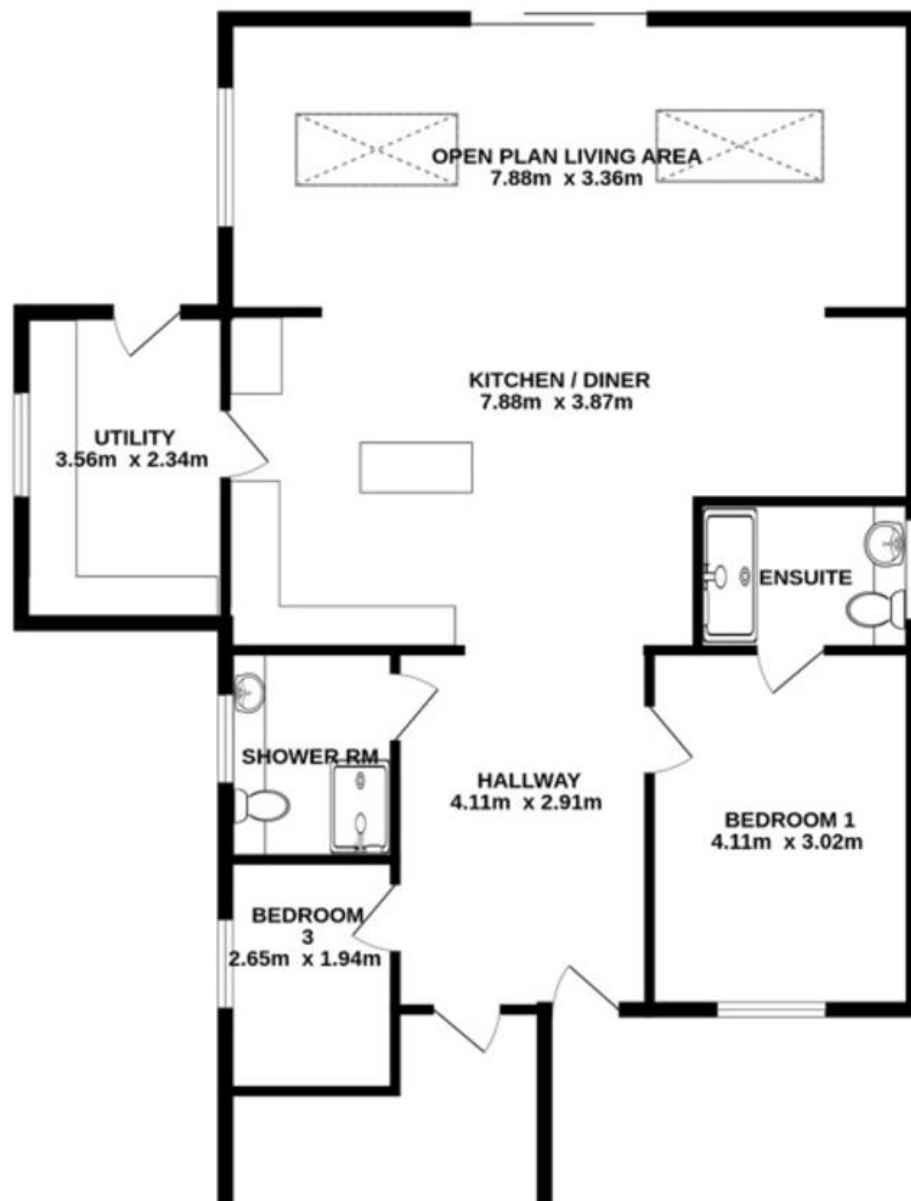
Wyndham Crescent, Clacton-on-Sea, CO15 6LH



JOHN ALEXANDER

FLOORPLAN

GROUND FLOOR



DIRECTIONS

CONTACT

99 London Road
Stanway
Colchester
Essex
CO3 0NY

E colchester@fineandcountry.com

T 01206 878155

www.john-alexander.co.uk

Find us on..



JOHN ALEXANDER
ESTATE AGENTS