



5 bedroom End Terraced House located in Colchester.

Guide Price
£400,000 - £435,000



JOHN ALEXANDER
ESTATE AGENTS

Find us on..



JOHN ALEXANDER



JOHN ALEXANDER



JOHN ALEXANDER



JOHN ALEXANDER
ESTATE AGENTS

48 Onslow Crescent Colchester CO2 8UW



5



3



2



EPC

C



FULL DESCRIPTION

OVERVIEW

*** GUIDE PRICE of £400,000 - £435,000***

SELF CONTAINED ANNEXE

John Alexander are pleased to present this end-terraced five/six bedroom home to the market, situated in the popular South district of Colchester. Being conveniently located for local amenities, also offering easy access to Mersea Island or the B1022 towards Tiptree and Maldon. Colchester town railway station can also be easily accessed via Mersea Road, having its direct links to London Liverpool Street, Ipswich and Norwich.

Property benefits include large reception rooms, kitchen, a self contained annexe, en-suite to master, family bathroom, enclosed rear garden and ample off road parking.

ENTRANCE HALL

Doors to:

KITCHEN

16' 6" x 14' 7" (5.03m x 4.44m)

DINING ROOM

18' 3" x 14' 7" (5.56m x 4.44m)

LOUNGE

11' 6" x 10' 2" (3.51m x 3.1m)

UTILITY ROOM/BEDROOM SIX

15' 7" x 6' 6" (4.75m x 1.98m)

FIRST FLOOR LANDING

Doors to:

BEDROOM ONE

22' 2" x 10' 9" (6.76m x 3.28m)

ENSUITE

BEDROOM TWO

10' 8" x 10' 1" (3.25m x 3.07m)

BEDROOM THREE

10' 7" x 10' 1" (3.23m x 3.07m)

BEDROOM FOUR

10' 3" x 7' 9" (3.12m x 2.36m)

FAMILY BATHROOM

7' 4" x 5' 6" (2.24m x 1.68m)

SELF CONTAINED ANNEXE

ANNEXE LOUNGE

16' 2" x 15' 7" (4.93m x 4.75m)

ANNEXE KITCHEN

7' 5" x 6' 7" (2.26m x 2.01m)

ANNEXE BEDROOM

15' 3" x 11' 8" (4.65m x 3.56m)

ANNEXE SHOWER ROOM

7' 9" x 4' 4" (2.36m x 1.32m)

OUTSIDE

To the front of the property, there is a driveway providing off road parking for ample vehicles.



JOHN ALEXANDER
ESTATE AGENTS

To the rear of the property, the garden is fully enclosed and private, having AstroTurf and a patio area.

AGENTS NOTE

Solar panels are owned outright by the vendor.



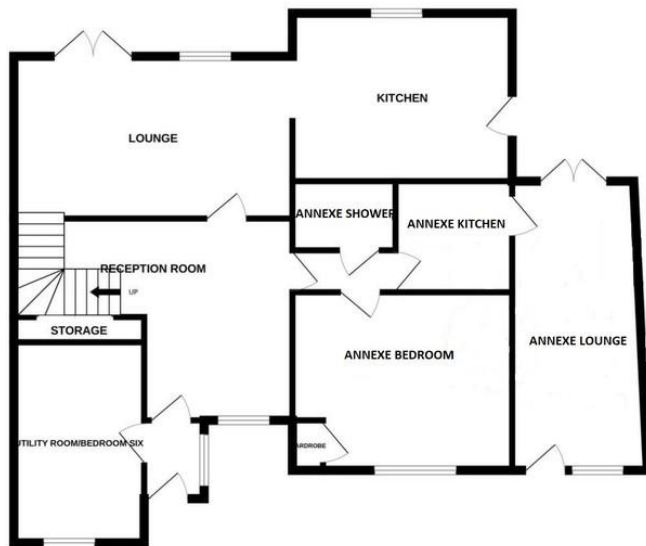
JOHN ALEXANDER
ESTATE AGENTS



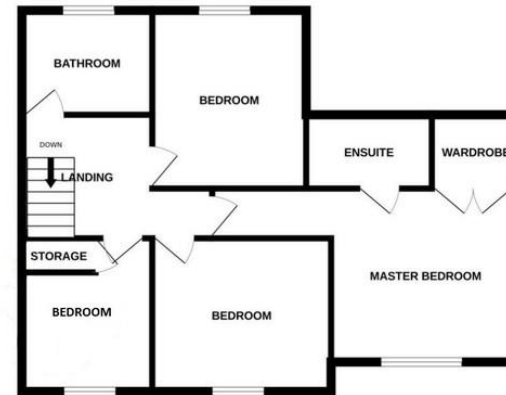
JOHN ALEXANDER
ESTATE AGENTS

FLOORPLAN

GROUND FLOOR



1ST FLOOR



Whilst every attempt has been made to ensure the accuracy of the floorplan contained here, measurements of doors, windows, rooms and any other items are approximate and no responsibility is taken for any error, omission or mis-statement. This plan is for illustrative purposes only and should be used as such by any prospective purchaser. The services, systems and appliances shown have not been tested and no guarantee as to their operability or efficiency can be given.
Made with Metropix ©2024

DIRECTIONS

CONTACT

**99 London Road
Stanway
Colchester
Essex
CO3 0NY**

E sales@john-alexander.co.uk

T 01206 656007

www.john-alexander.co.uk

Find us on..



JOHN ALEXANDER
ESTATE AGENTS