



Larch Court, Royal Oak Yard, SE1
London

£675,000





Flat 402

Larch Court, London

A superbly presented two double bedroom, two bathroom apartment quietly and conveniently located just off Bermondsey Street, and featuring far reaching views towards the Capital's skyline.

Council Tax band: E

Tenure: Leasehold

EPC Energy Efficiency Rating: C

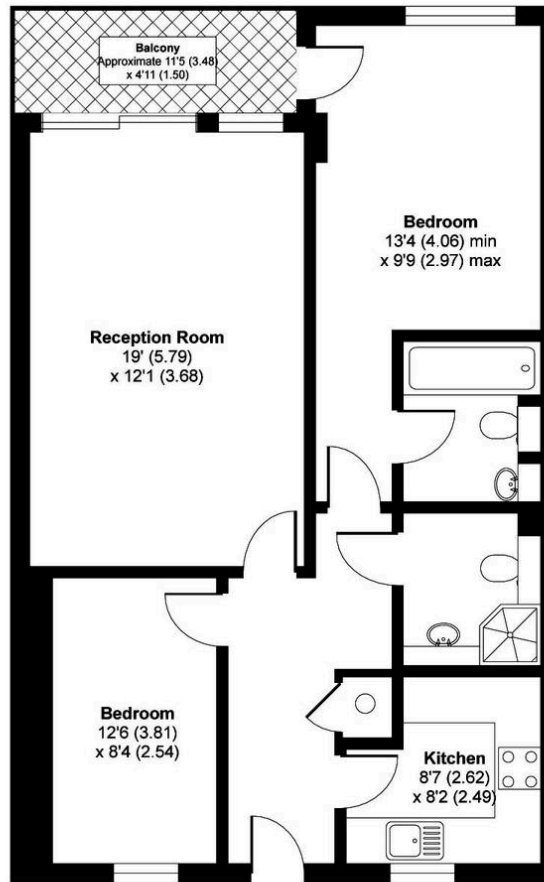
EPC Environmental Impact Rating: C

- Conveniently situated just off the vibrant Bermondsey Street
- Far reaching views towards the Capital skyline
- Easy reach of London Bridge station
- Generous living area flooded with natural light
- Two Double bedrooms
- Walking distance of The City
- Fully fitted and well equipped kitchen
- Private balcony with fantastic views
- Excellent amenities in the immediate area
- 999 year lease from 2002



Larch Court, Royal Oak Yard, London, SE1

APPROX. GROSS INTERNAL FLOOR AREA 747 SQ FT 69.4 SQ METRES



4TH FLOOR

Whilst every attempt has been made to ensure the accuracy of the floor plan contained here, measurements of doors, windows and rooms are approximate and no responsibility is taken for any error, omission or misstatement. These plans are for representation purposes only as defined by RICS Code of Measuring Practice and should be used as such by any prospective purchaser. Specifically no guarantee is given on the total square footage of the property if quoted on this plan. Any figure given is for initial guidance only and should not be relied on as a basis of valuation.

Copyright nichecom.co.uk 2019

Produced for Daniel Cobb

REF : 486874



Daniel Cobb

Daniel Cobb Estate Agents, 82-84 Bermondsey Street – SE1 3UD

020 7357 0026 • londonbridge@danielcobb.co.uk • www.danielcobb.co.uk/