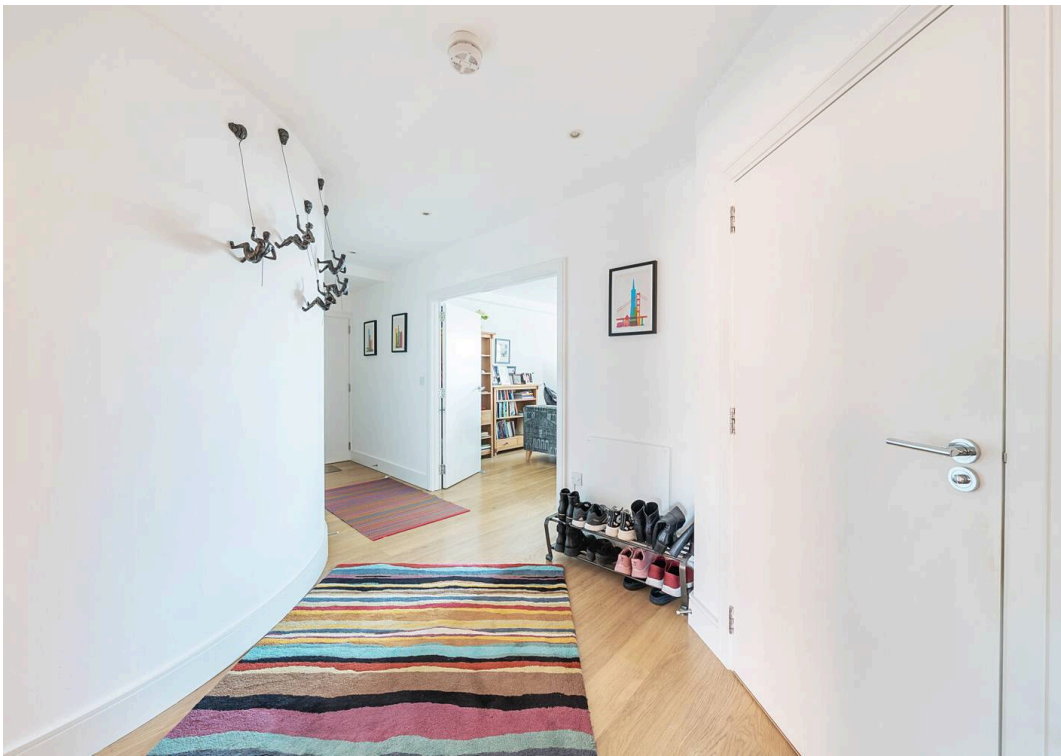




Bell Yard Mews, SE1

£985,000





11 Bell Yard Mews, London

A superbly presented 2 double bedroom apartment on the 3rd floor on this modern building in this quiet mew off Bermondsey street with allocated parking space.

Council Tax band: F

Tenure: Leasehold

EPC Energy Efficiency Rating: C

EPC Environmental Impact Rating: C

- Quietly located in a small mews leading off from Bermondsey Street
- Third floor (with Lift and Stairs)
- Particularly spacious interior of 1,234 square feet
- West facing double size reception room with ample living space and dining area.
- Superbly presented interior
- Main bedroom suite with superb shower room/w.c.
- 2nd double bedroom
- Excellent main bathroom/w.c
- Wide entrance hall with ample storage and utility room.
- Furniture available by separate purchase



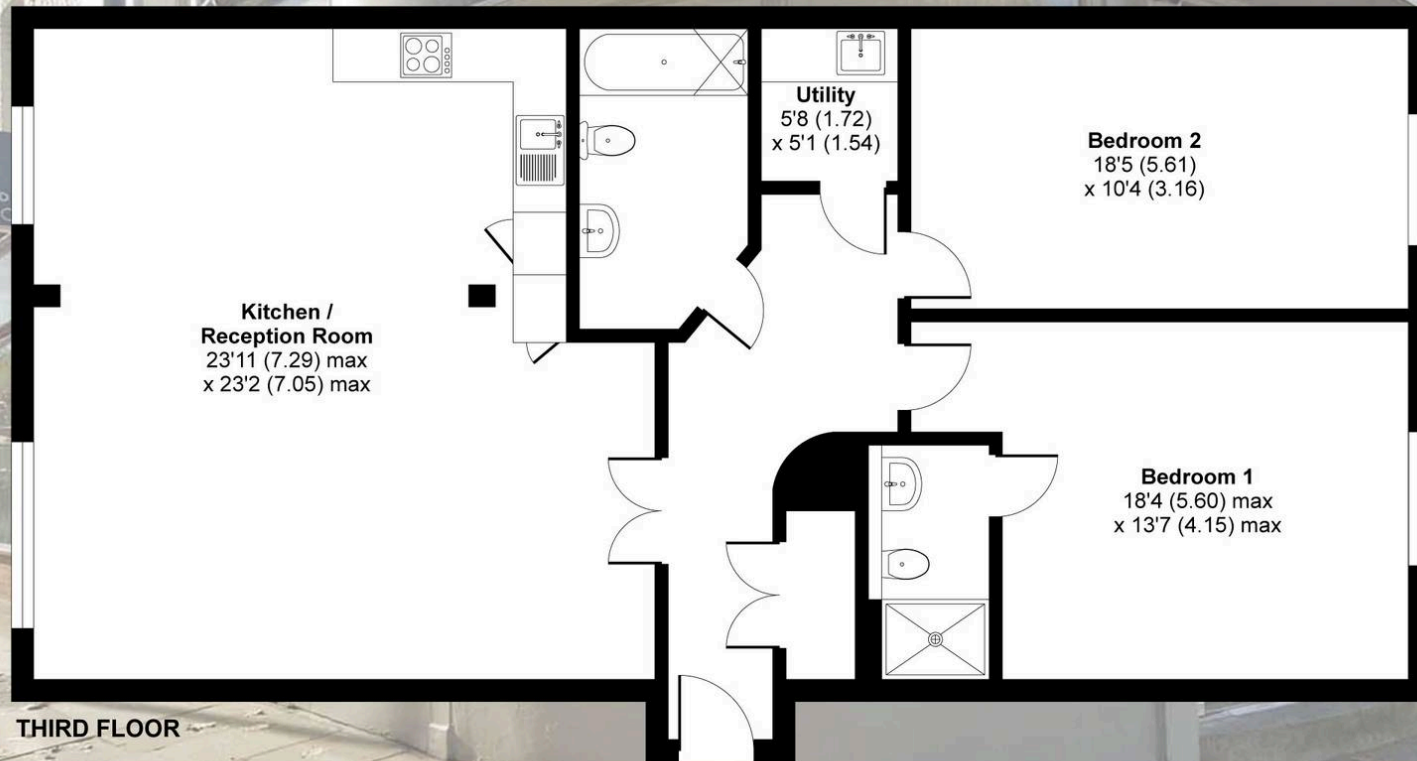
Bell Yard Mews, London, SE1

Approximate Area = 1234 sq ft / 114.6 sq m

For identification only - Not to scale



DANIEL COBB



Floor plan produced in accordance with RICS Property Measurement 2nd Edition, Incorporating International Property Measurement Standards (IPMS2 Residential). © n.checom 2025. Produced for Daniel Cobb. REF: 1288926



Daniel Cobb

Daniel Cobb Estate Agents, 82-84 Bermondsey Street – SE1 3UD

020 7357 0026 • londonbridge@danielcobb.co.uk • www.danielcobb.co.uk/