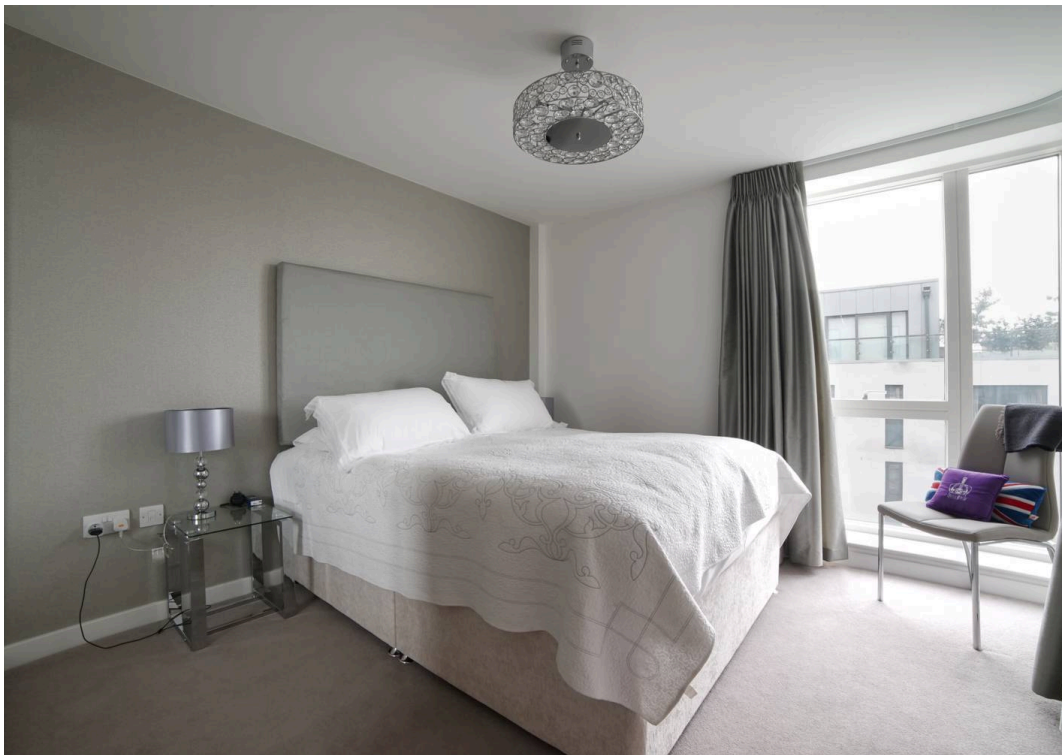




14 The Valentine, 117 Weston Street
London



14 The Valentine

117 Weston Street, London

- Located a short walk from London Bridge station
- Large balcony
- High specification throughout
- Fully equipped contemporary kitchen
- Bathroom and en suite shower room/wc.
- Modern development built in 2015
- Conveniently located within easy reach of Bermondsey Street
- Share of freehold
- Secure bicycle store
- No onward chain

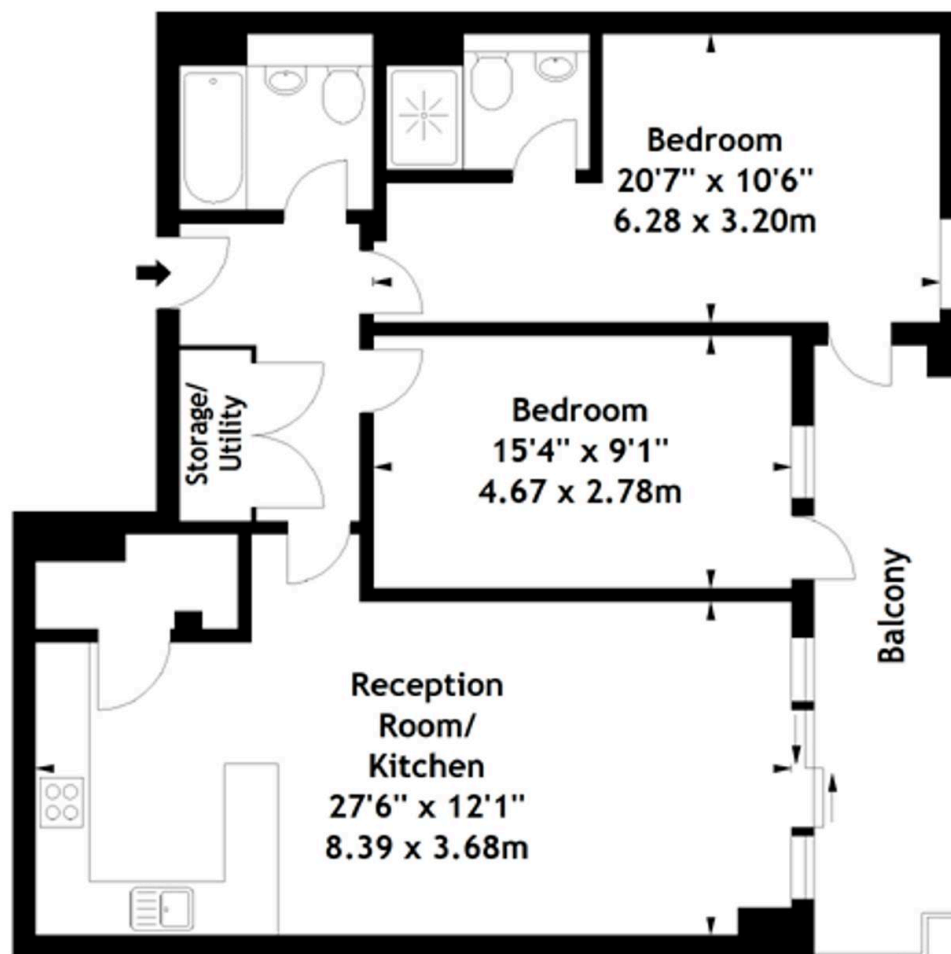
Council Tax Band E

Share of Freehold

EPC Rating B



The Valentine,
Weston Street, SE1
Approx. Gross Internal Area
865 Sq Ft - 80.36 Sq M



Fourth Floor

Measured in accordance with RICS guidelines. Every attempt is made to ensure accuracy, however all measurements are approximate. This floor plan is for illustrative purposes only and is not to scale.

© Datagraphy Ltd 2015
Photographs * Floorplans * Virtual Tours
Tel: 0845 643 4401 www.datagraphy.com



Daniel Cobb

Daniel Cobb Estate Agents, 82-84 Bermondsey Street – SE1 3UD

020 7357 0026 • londonbridge@danielcobb.co.uk • www.danielcobb.co.uk/