



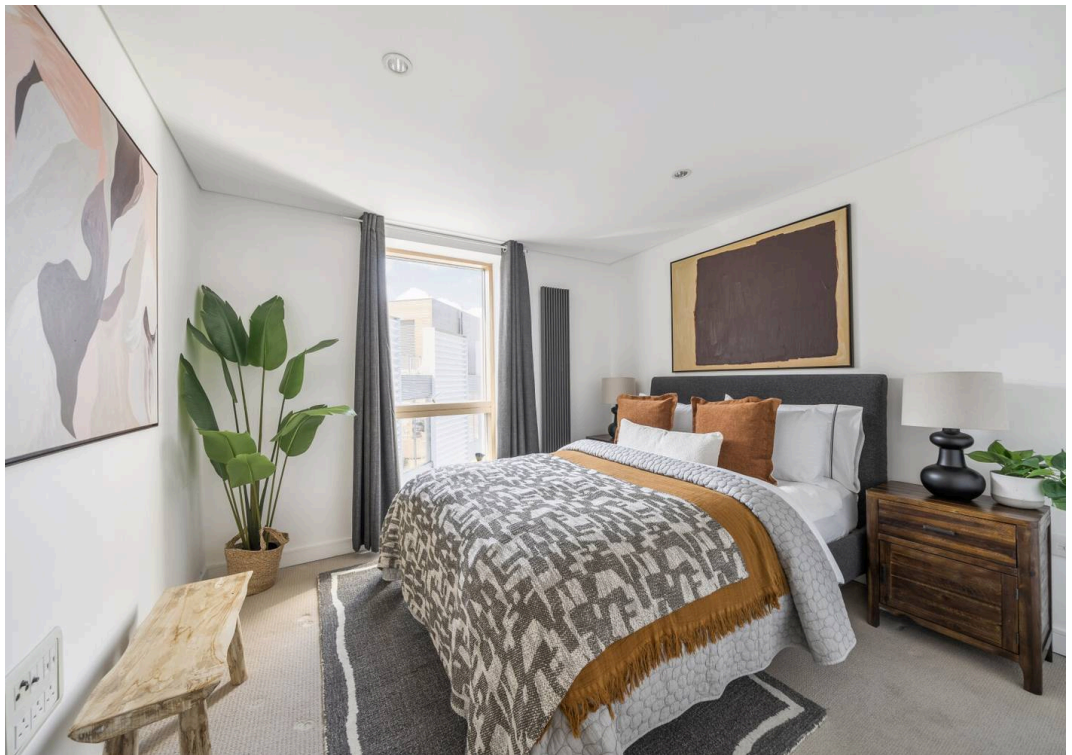
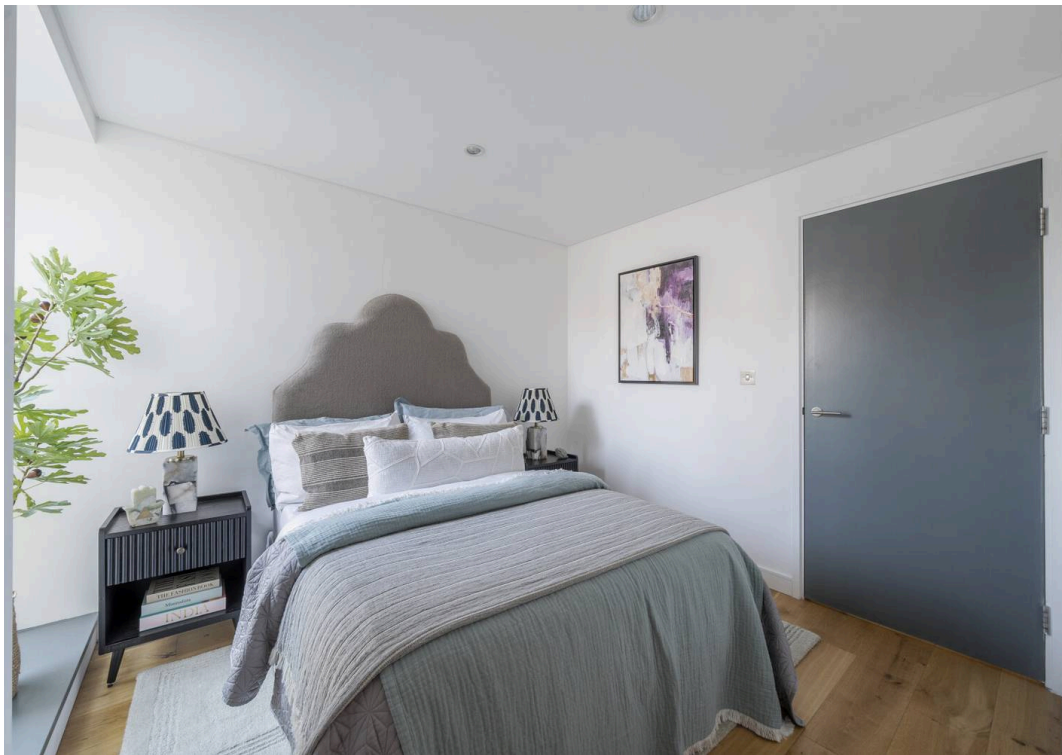
Bermondsey Square, SE1

London

£925,000







Flat 63

12 Bermondsey Square, London

Council Tax band: E

Tenure: Leasehold

EPC Energy Efficiency Rating: B

EPC Environmental Impact Rating: B

- Desirable modern development with 24 hours concierge
- 125 year lease from 2008 (109 year remaining)
- Seventh and Eighth floor
- Stunning roof terrace with uninterrupted panoramic views
- Generous living space flooded with natural light
- Large balcony with fantastic views of the city skyline
- Main bedroom suite with en suite bathroom
- Wide entrance hall with excellent storage
- Superbly appointed main shower room/w.c
- Fully equipped and comprehensively fitted kitchen



Bermondsey Square, London, SE1

Approximate Area = 830 sq ft / 77.1 sq m

For identification only - Not to scale



Roof Terrace
35'2 (10.71)
x 30' (9.14)

EIGHTH FLOOR

Balcony
11'2 (3.40)
x 6'1 (1.85)

Reception Room
16'8 (5.07)
x 15'2 (4.63)

**Kitchen /
Dining Room**
17'10 (5.43)
x 11'3 (3.43)

Bedroom 2
9'7 (2.93)
x 9' (2.74)

Bedroom 1
10'8 (3.25)
x 10'2 (3.08)

Up

SEVENTH FLOOR



Floor plan produced in accordance with RICS Property Measurement 2nd Edition,
Incorporating International Property Measurement Standards (IPMS2 Residential). © n.checom 2025.
Produced for Daniel Cobb. REF: 1310521



Daniel Cobb

Daniel Cobb Estate Agents, 82-84 Bermondsey Street – SE1 3UD

020 7357 0026 • londonbridge@danielcobb.co.uk • www.danielcobb.co.uk/