



Tyers Gate, SE1

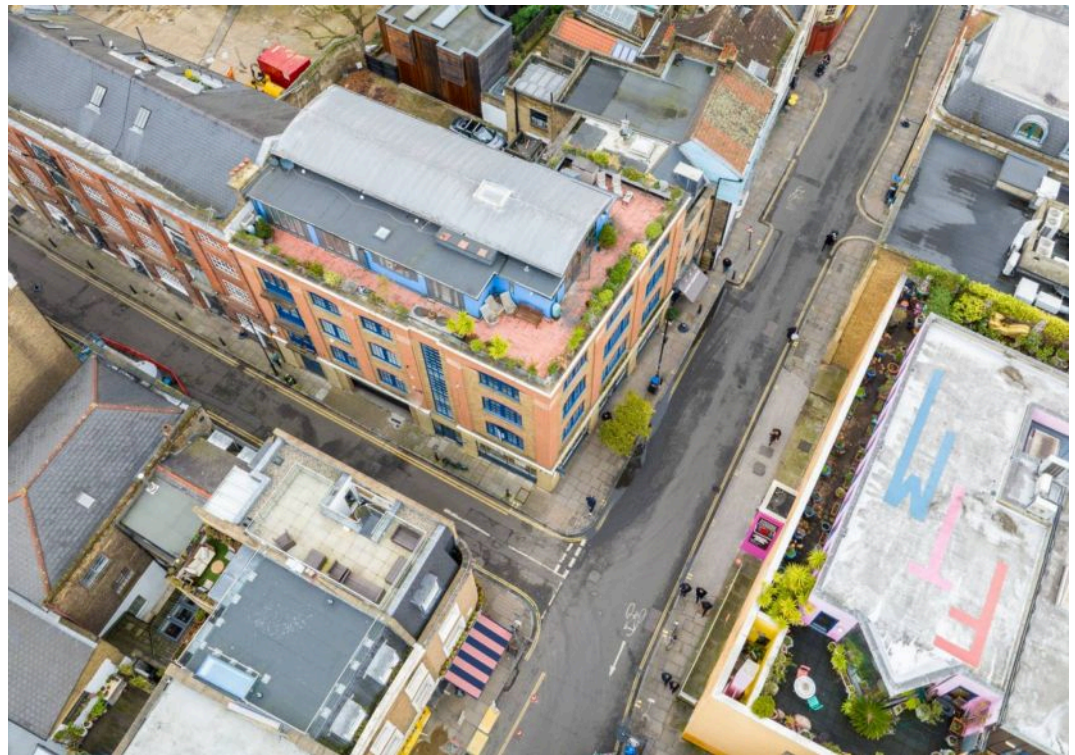
London

£1,750,000









Flat 7

2 Tyers Gate, London

A unique 2/3 bedroom penthouse in the heart of Bermondsey Village. Stunning interior featuring a striking living space with wrap around terrace enjoying uninterrupted views.
Council Tax band: TBD

Tenure: Share of Freehold

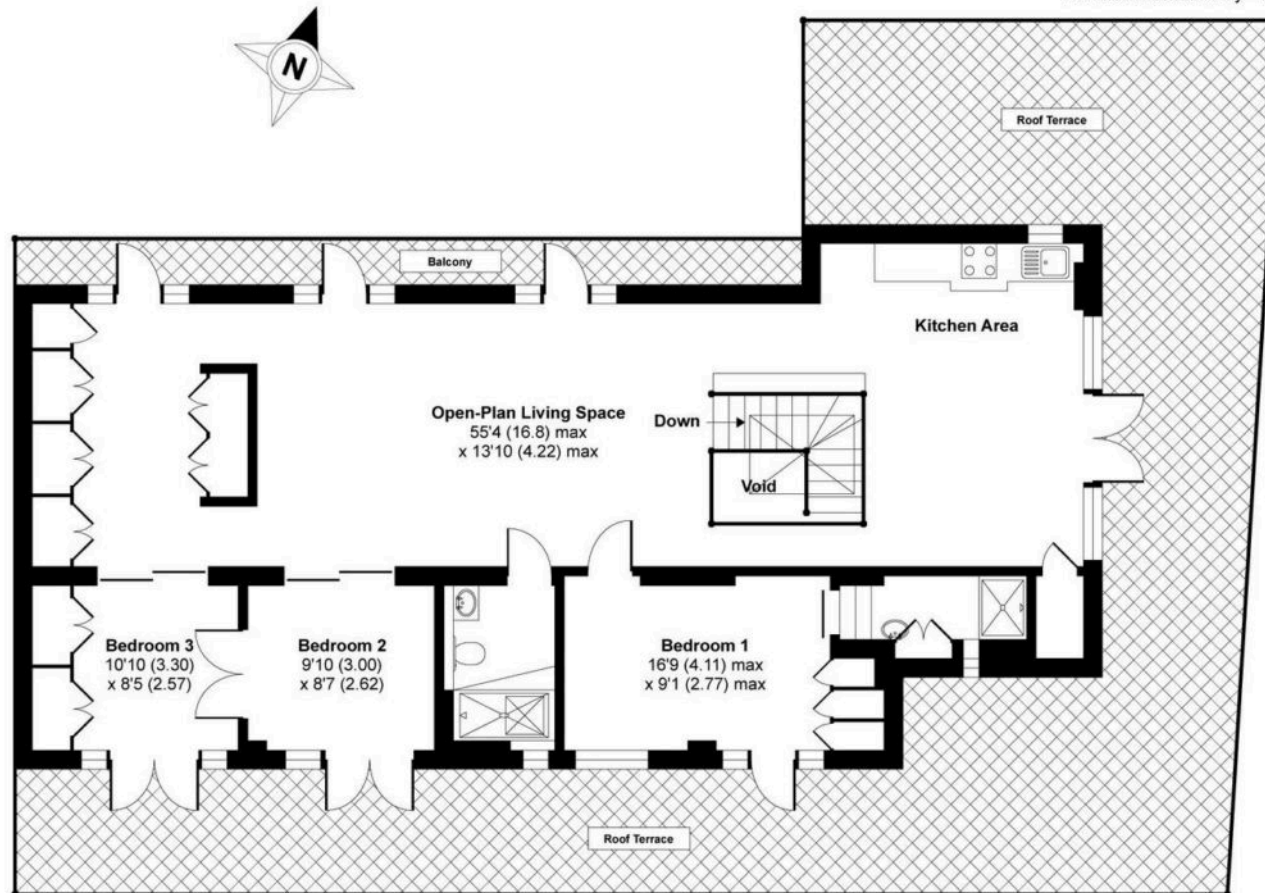
- Remarkable living space
- Enjoying unrivalled privacy
- 360 degree view of the London skyline
- Secure and gated parking space
- Enjoy the vibrant city in your own private space
- Stunning interior with wonderful natural light
- In the heart of Bermondsey Village
- 999 year lease from 1997
- Wrap around terrace of almost 1000 square feet
- Professionally equipped kitchen



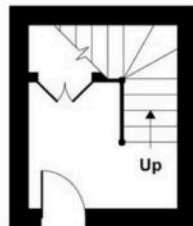
Tyers Gate, London, SE1

Approximate Area = 1338 sq ft / 124.3 sq m (excludes void)

For identification only - Not to scale



FOURTH FLOOR



THIRD FLOOR



Floor plan produced in accordance with RICS Property Measurement Standards incorporating International Property Measurement Standards (IPMS2 Residential). © n'checon 2022. Produced for Daniel Cobb. REF: 843748



Daniel Cobb

Daniel Cobb Estate Agents, 82-84 Bermondsey Street – SE1 3UD

020 7357 0026 • londonbridge@danielcobb.co.uk • www.danielcobb.co.uk/