



Grange Road, SE1
London

£575,000





Grange Road, SE1

Council Tax band: D

Tenure: Leasehold

EPC Energy Efficiency Rating: C

EPC Environmental Impact Rating: D

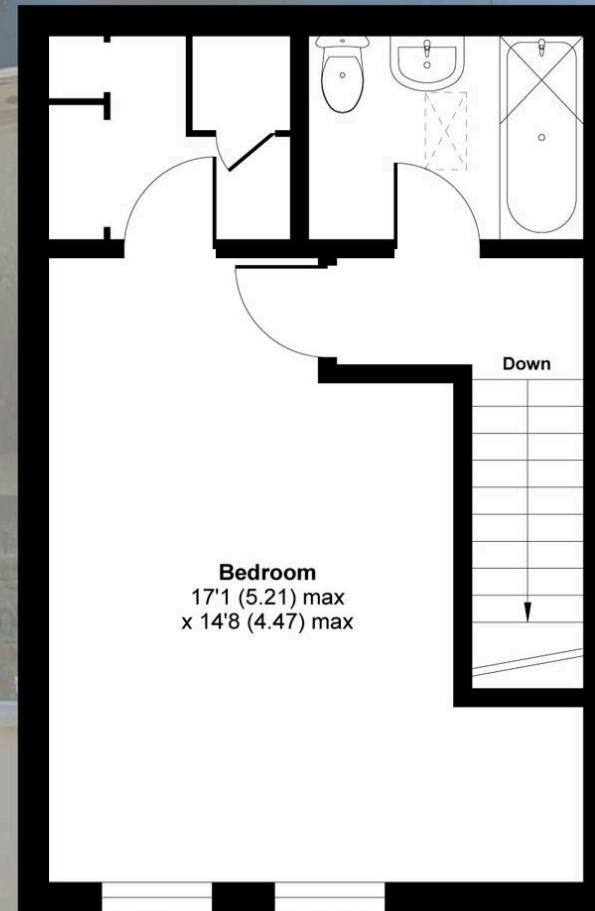
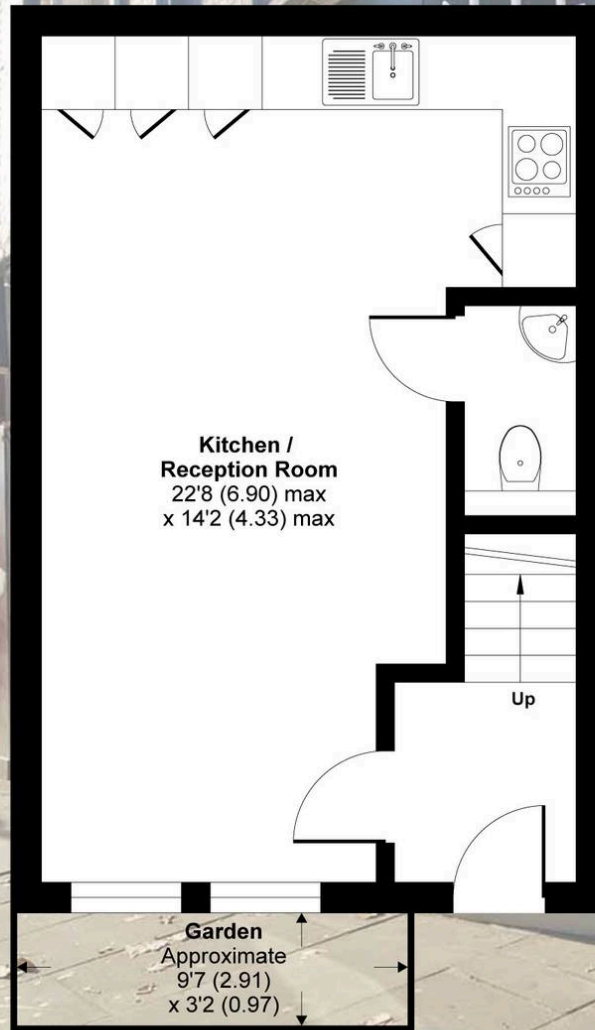
- Secure gated development and one of 4 mews houses
- Quietly and conveniently located
- One bedroom 2 storey mews house of almost 650 square feet
- Superbly presented interior in excellent condition with spacious open plan living space.
- Fully fitted and equipped kitchen
- First floor bedroom with walk in wardrobe and en-suite bathroom/w.c
- No onward chain
- A short walk from the fashionable Bermondsey Street
- Within easy reach of London Bridge station.
- Walking distance of Tower Bridge and the City



Grange Road, London, SE1

Approximate Area = 648 sq ft / 60.2 sq m

For identification only - Not to scale



Floor plan produced in accordance with RICS Property Measurement 2nd Edition, Incorporating International Property Measurement Standards (IPMS2 Residential). © n.checom 2025. Produced for Daniel Cobb. REF: 1250395



Daniel Cobb

Daniel Cobb Estate Agents, 82-84 Bermondsey Street – SE1 3UD

020 7357 0026 • londonbridge@danielcobb.co.uk • www.danielcobb.co.uk/