

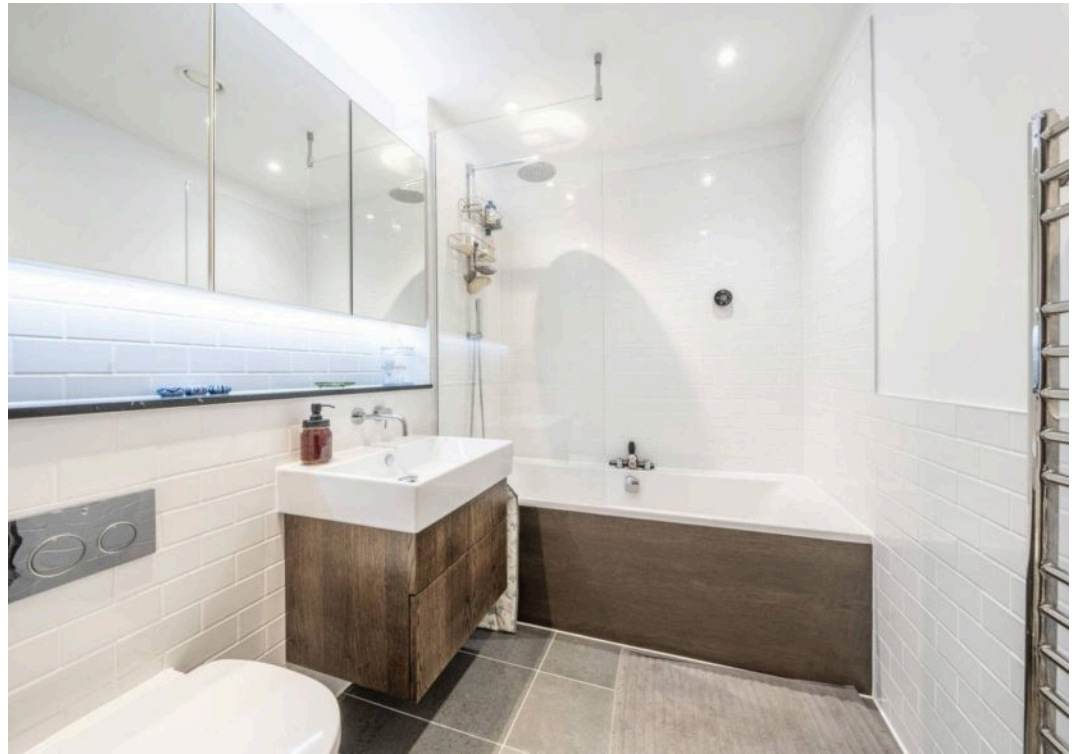


Taper Building, Long Lane, SE1
London

£950,000









Taper Building, Long Lane, SE1

A superbly presented 2 double bedroom apartment on the 3rd floor of this award winning development with concierge and resident gym located close to Bermondsey Street and London Bridge station. Council Tax band: E

Tenure: Leasehold

EPC Energy Efficiency Rating: B

EPC Environmental Impact Rating: A

- Close to London Bridge station
- Generous living area flooded with natural light
- Fully equipped contemporary fitted kitchen
- Award winning development
- Underfloor heating throughout
- 3rd floor with stunning south facing balcony
- Secure bicycle storage
- 999 year lease from 2016
- 24 hour concierge and residents gym
- Superbly maintained landscaped communal gardens and communal roof terrace.



Taper Building, Long Lane, London, SE1

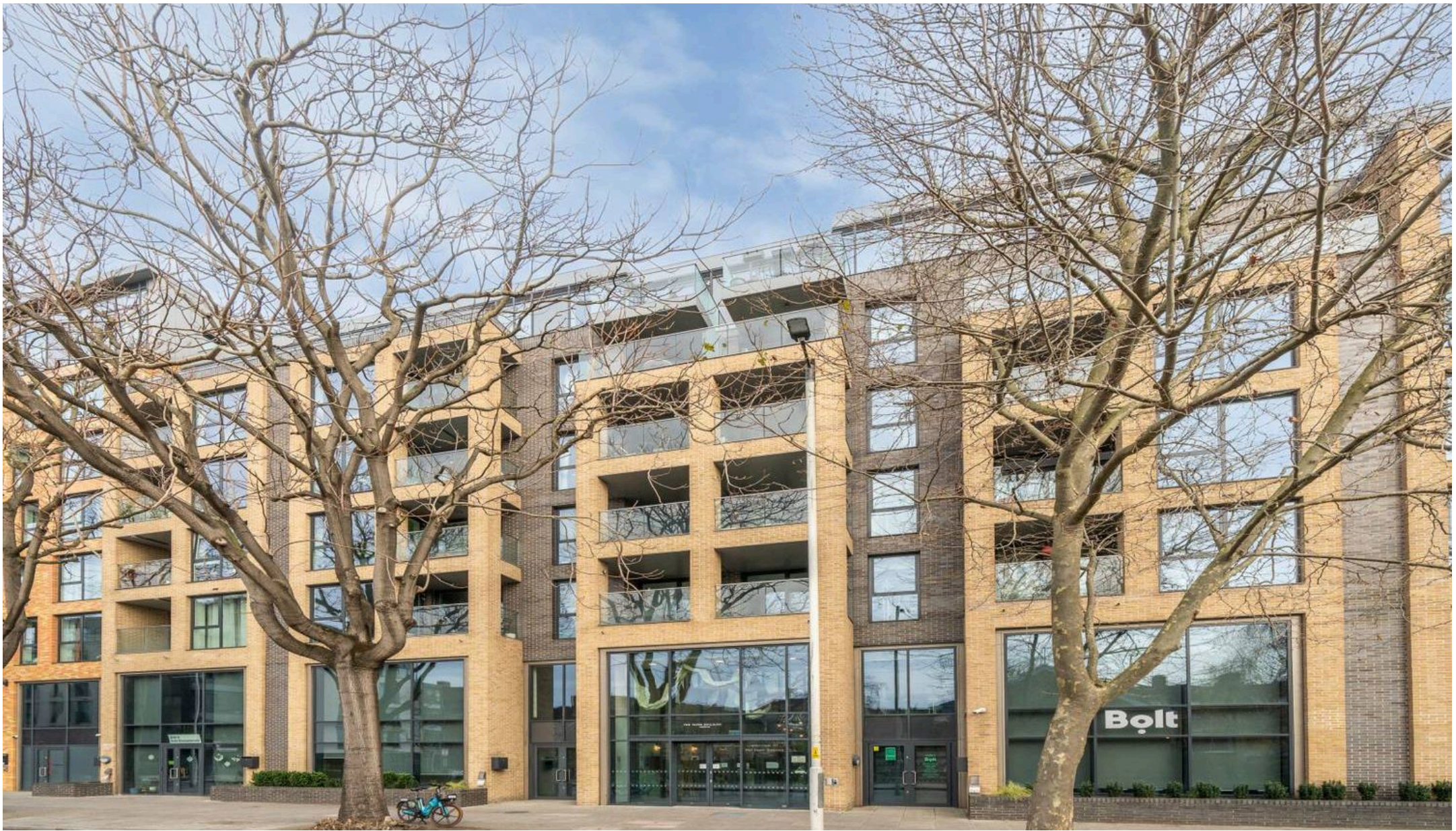
Approximate Area = 936 sq ft / 86.9 sq m

For identification only - Not to scale

DANIEL COBB



Floor plan produced in accordance with RICS Property Measurement 2nd Edition, Incorporating International Property Measurement Standards (IPMS2 Residential). © n'checon 2025. Produced for Daniel Cobb. REF: 1225243



Daniel Cobb

Daniel Cobb Estate Agents, 82-84 Bermondsey Street – SE1 3UD

020 7357 0026 • londonbridge@danielcobb.co.uk • www.danielcobb.co.uk/