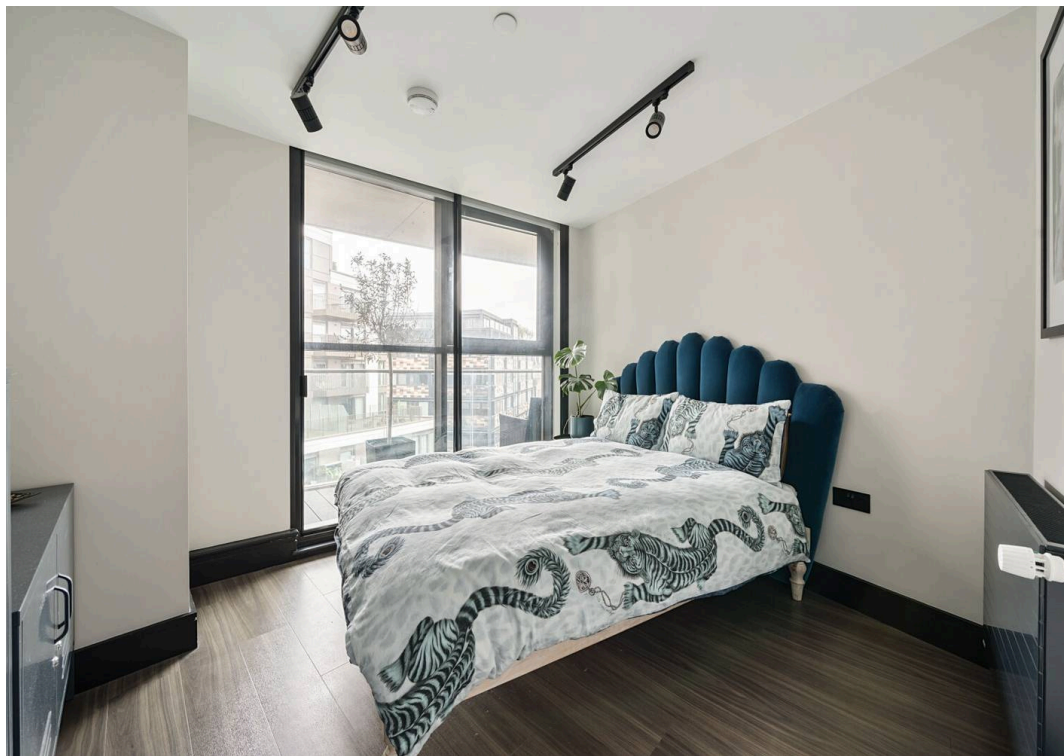




Newhams Yard, Tower Bridge Road, SE1

£785,000





Newhams Yard, Tower Bridge Road,

A superbly presented 2 bedroom apartment on the 3rd floor of this stylish, award-winning development with concierge service, south-facing wrap-around balcony, communal roof gardens and independently operated gym

Council Tax band: E

Tenure: Leasehold

EPC Energy Efficiency Rating: B

EPC Environmental Impact Rating: B

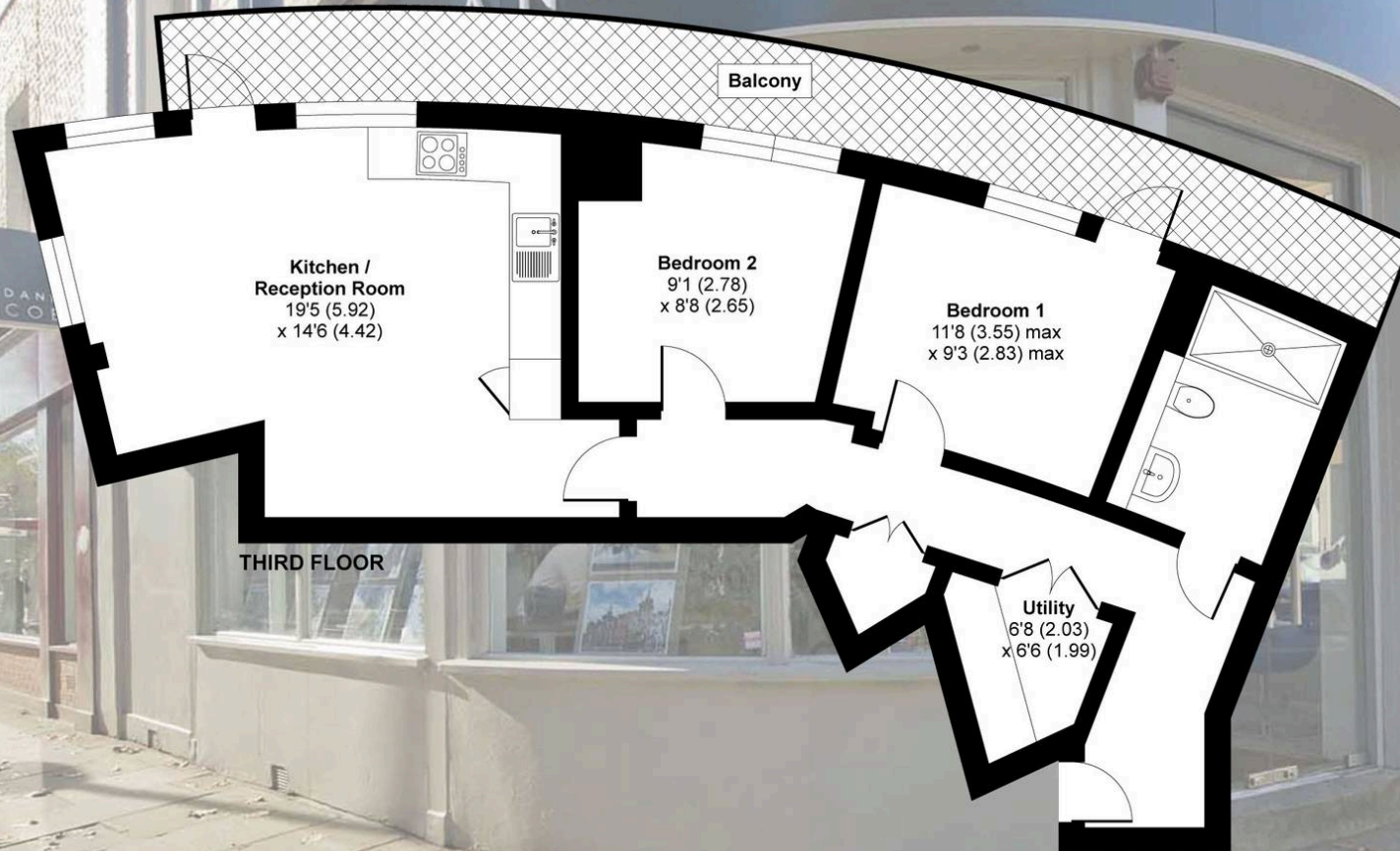
- Immaculately presented double aspect 2 bedroom apartment
- High quality fully fitted kitchen
- Large south facing wrap-around balcony
- Award winning development on Tower Bridge Road
- Moments from Bermondsey Street's boutique shops, vibrant cafes and restaurants
- Superbly finished communal internal and external areas
- Communal roof gardens with fabulous view of the capital skyline
- Concierge service and an independently operated gym.
- Prime location just a 10-minute walk from London Bridge Station
- No onward chain



Tower Bridge Road, London, SE1

Approximate Area = 704 sq ft / 65.4 sq m

For identification only - Not to scale



Floor plan produced in accordance with RICS Property Measurement 2nd Edition, Incorporating International Property Measurement Standards (IPMS2 Residential). © n.checom 2025. Produced for Daniel Cobb. REF: 1228299



Daniel Cobb

Daniel Cobb Estate Agents, 82-84 Bermondsey Street – SE1 3UD

020 7357 0026 • londonbridge@danielcobb.co.uk • www.danielcobb.co.uk/