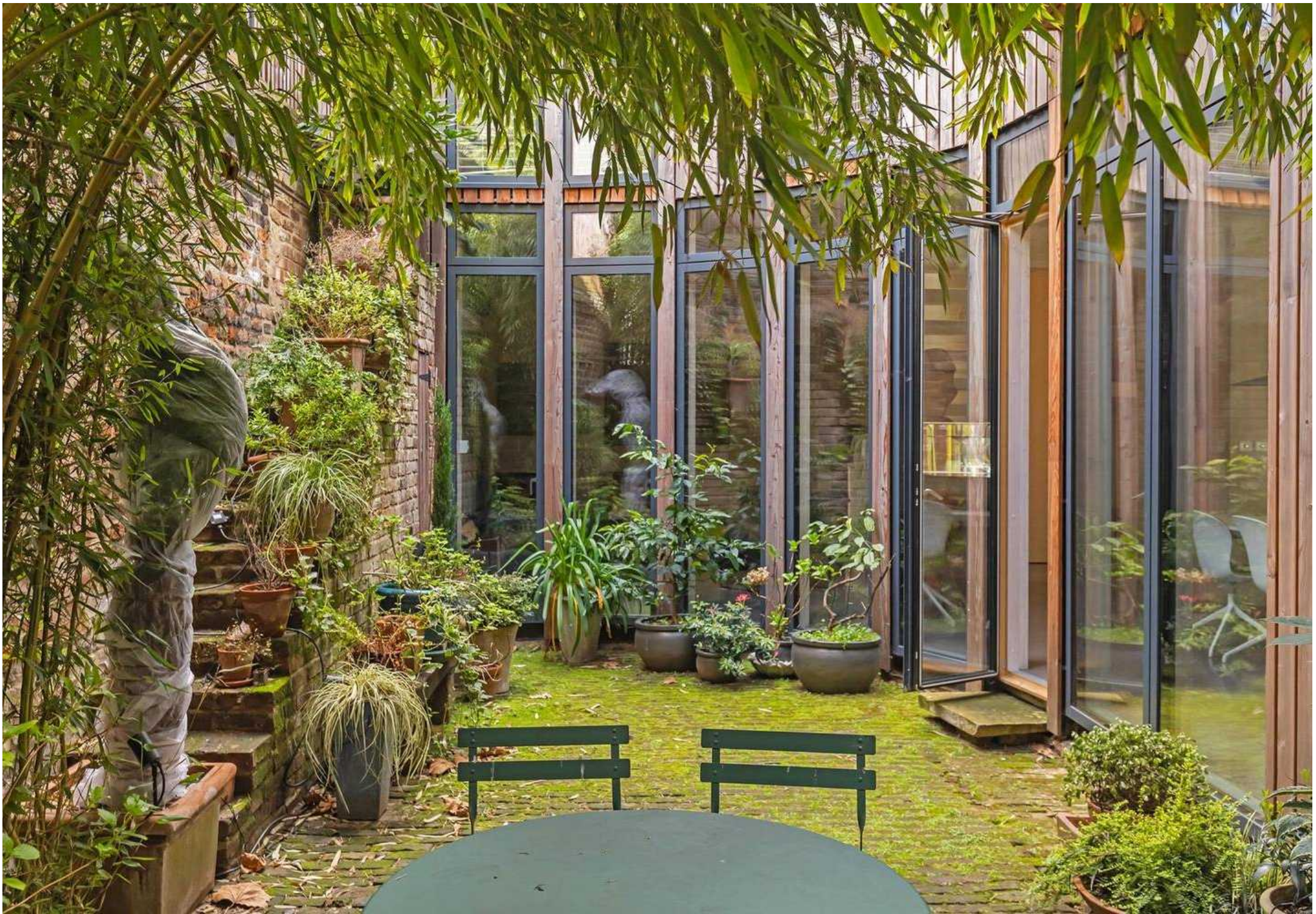
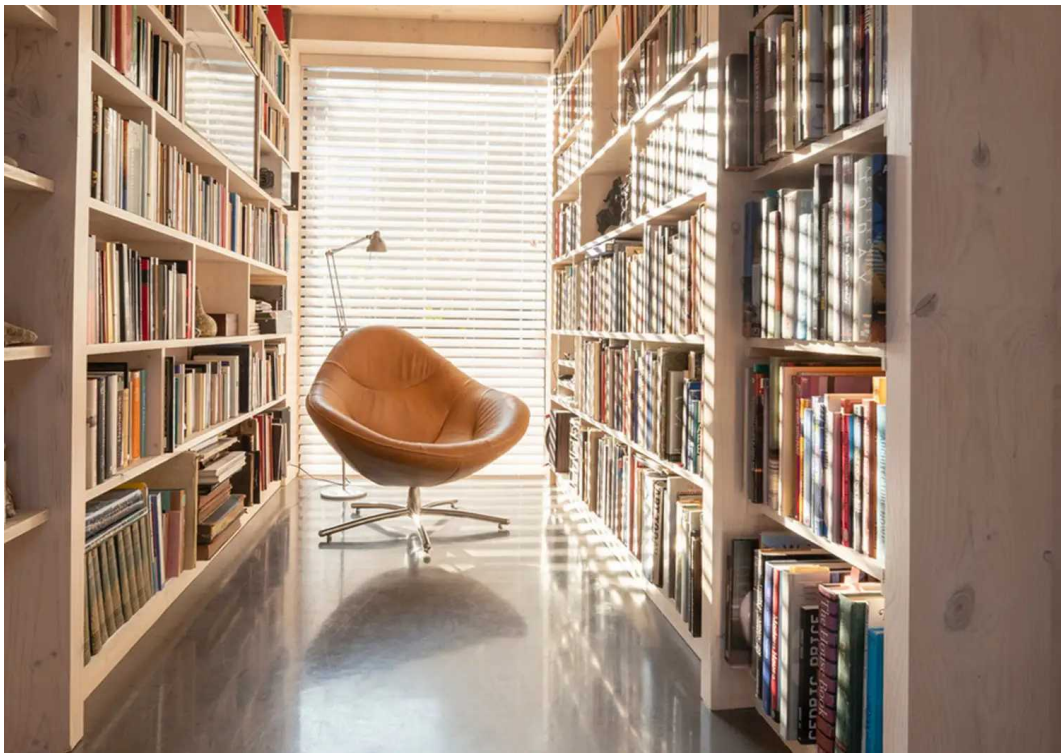
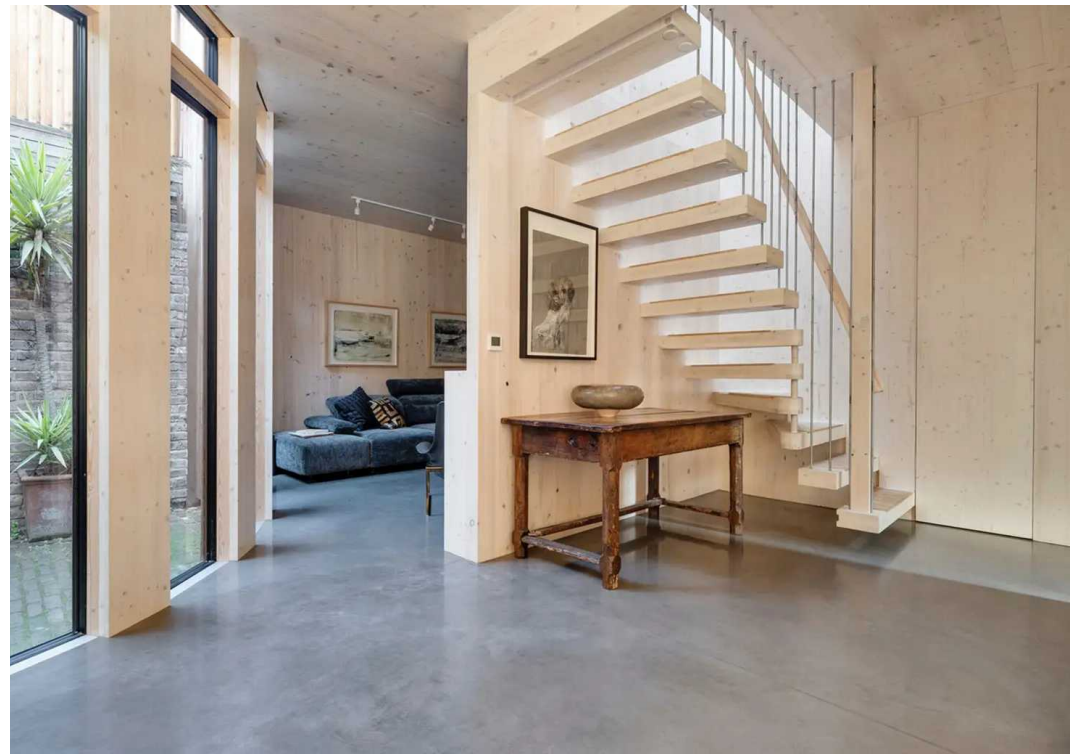


Carmarthen Place, SE1

£1,800,000







Carmarthen Place

Architecturally designed and incredibly unique eco house situated in a mews just off Bermondsey Street. This stunning house has been beautifully designed to both an exceptional standard and detail throughout.

Council Tax band: G

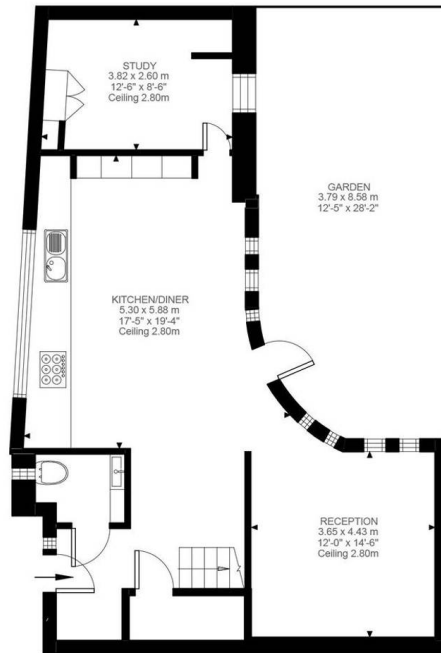
Tenure: Freehold

EPC Energy Efficiency Rating: B

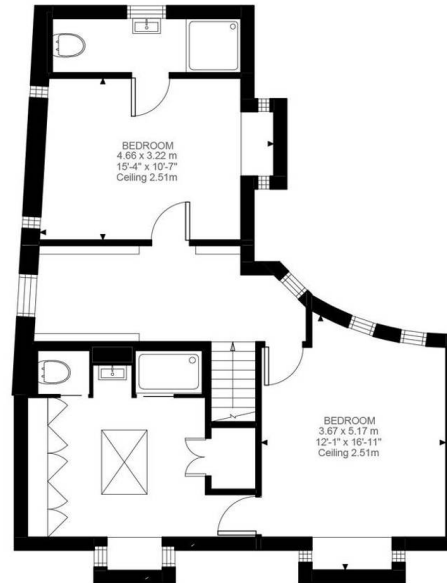
EPC Environmental Impact Rating: B

- Two shower rooms
- Reception space plus study
- Downstairs cloakroom inc. WC
- Full of warmth & character
- Quietly and secluded location off Bermondsey Street
- Constructed with sustainably sourced solid Slovenian Spruce and Siberian Larch
- Excellent local restaurants within easy reach.
- Tranquil courtyard
- Beautifully light interior extending to almost 1,400 sq ft across 2 floors.
- Living spaces with flooded with natural light





Ground Floor
712 ft²



First Floor
677 ft²

Carmarthen Place, SE1
Approximate Gross Internal Area
129.08 SQ.M / 1389 SQ.FT

KEY: CH = Ceiling Height
[Restricted Head Height]



Daniel Cobb

Daniel Cobb Estate Agents, 82-84 Bermondsey Street – SE1 3UD

020 7357 0026 • londonbridge@danielcobb.co.uk • www.danielcobb.co.uk/