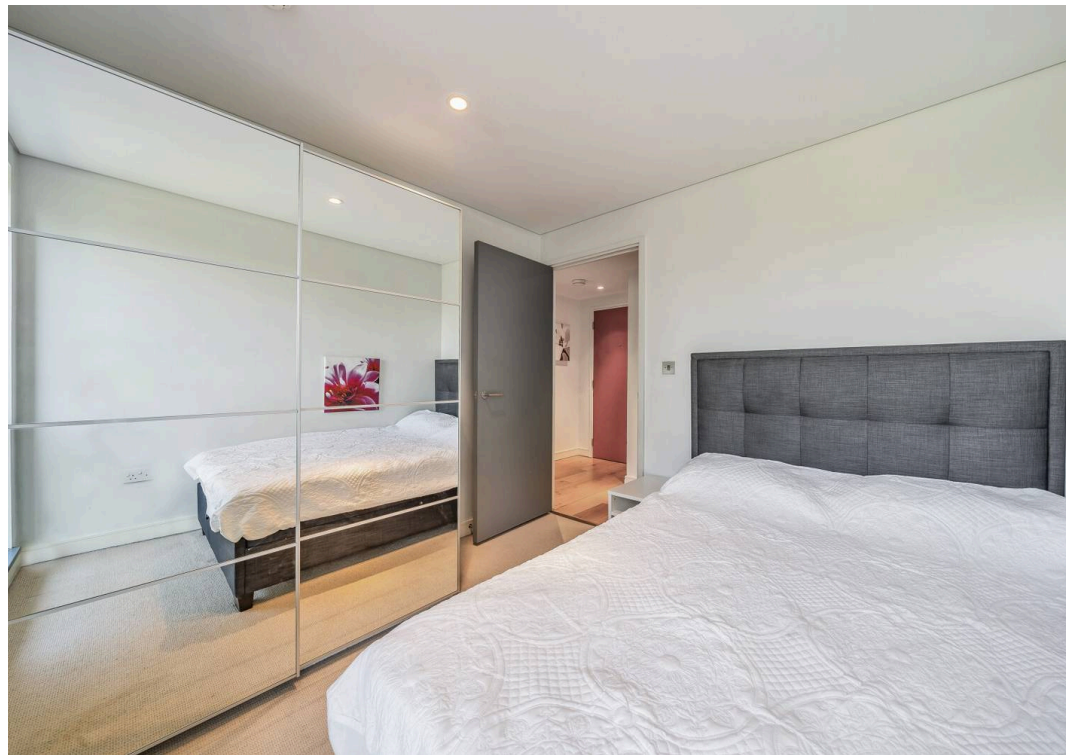




Bermondsey Square, SE1

£685,000





Bermondsey Square, SE1

A two double bedroom apartment in this desirable and convenient development standing on the historic Bermondsey Square. Offers a 24hr concierge service and is close to Bermondsey Street. Council Tax band: E

Tenure: Leasehold

EPC Energy Efficiency Rating: B

EPC Environmental Impact Rating: B

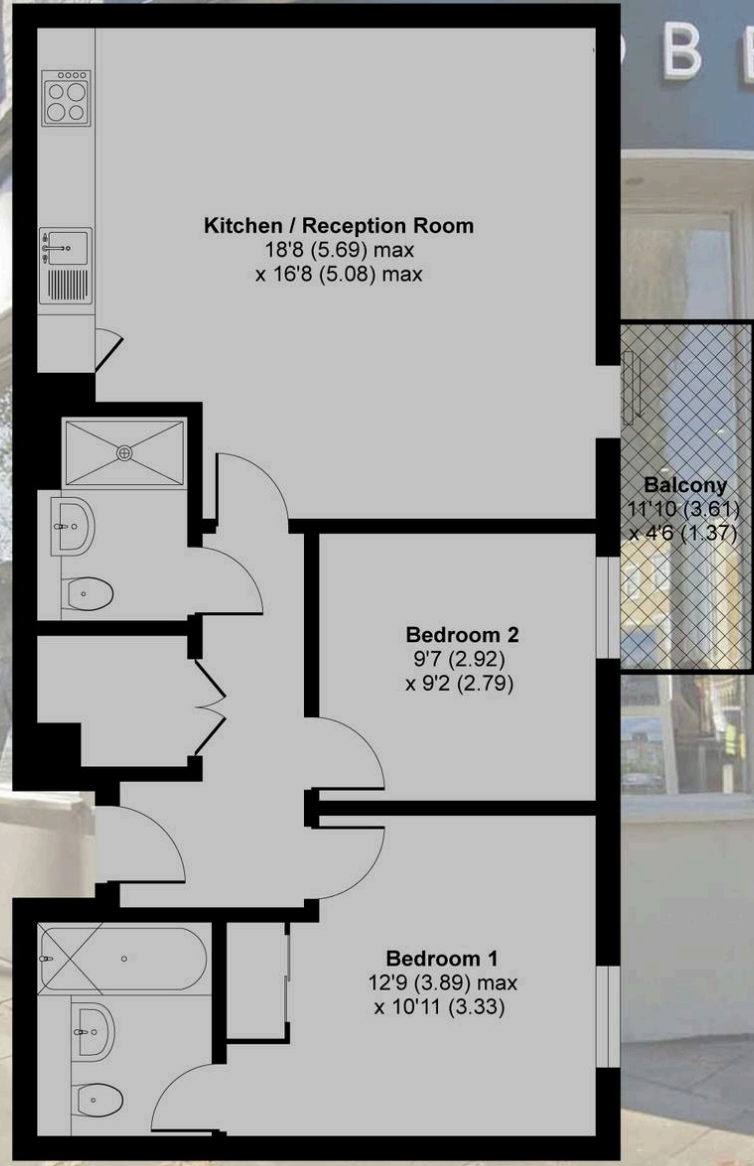
- Historic square with restaurants, hotel and convenience supermarket
- Private balcony with fabulous city views
- Two double bedrooms (main with en-suite bathroom/wc)
- Fully fitted and equipped kitchen
- Generous living space flooded with natural light
- 3rd floor
- EWS compliant
- Desirable modern development with 24 hour concierge
- Lift Access City is accessible over nearby Tower Bridge and London Bridge, which is a short walk along Bermondsey Street



Bermondsey Square, London, SE1

Approximate Area = 717 sq ft / 66.6 sq m

For identification only - Not to scale



THIRD FLOOR



Floor plan produced in accordance with RICS Property Measurement Standards incorporating International Property Measurement Standards (IPMS2 Residential). © nichecom 2024. Produced for Daniel Cobb. REF: 1166166



Daniel Cobb

Daniel Cobb Estate Agents, 82-84 Bermondsey Street – SE1 3UD

020 7357 0026 • londonbridge@danielcobb.co.uk • www.danielcobb.co.uk/