

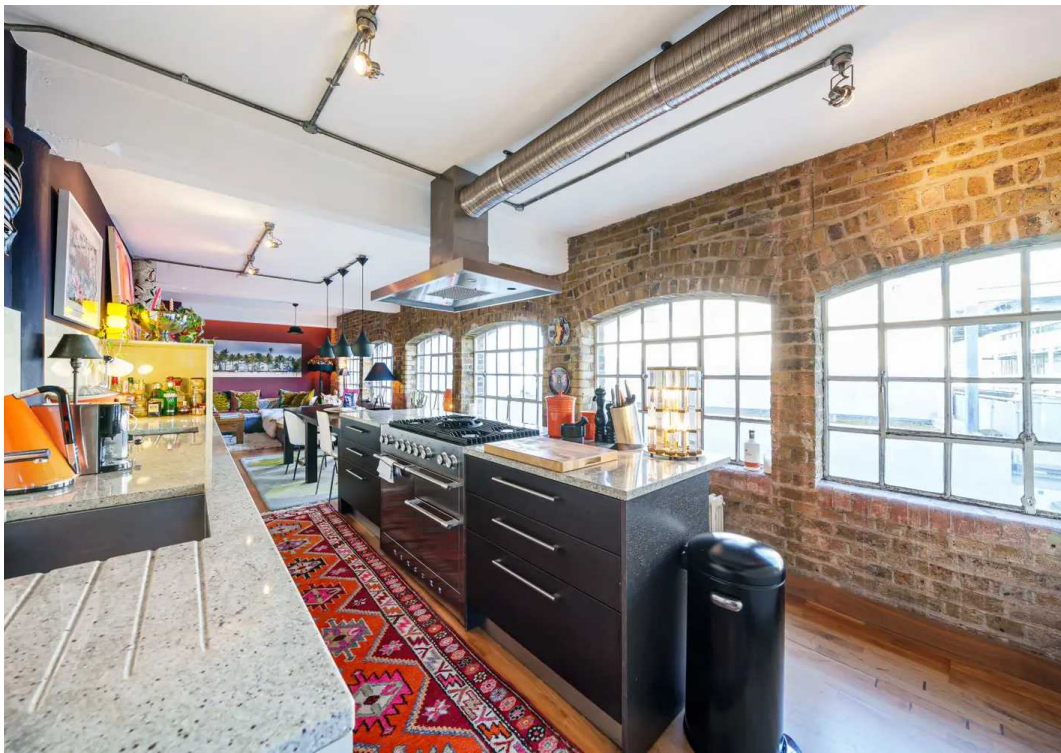


Gemini House 180-182 Bermondsey Street, SE1

London

£1,595,000





## Gemini House, Bermondsey Street, SE1

A beautifully presented warehouse apartment on the 3rd floor of this prominent and notable building on Bermondsey street with a striking and stylish apartment of almost 1,500 square feet and featuring a contemporary loft style living space with a wonderful interior flooded with natural light.

Council Tax band: D

Tenure: Leasehold

- 180 year lease  
3rd floor of this prominent and notable building on Bermondsey Street
- Substantial lateral warehouse conversion with a stylish and beautifully presented interior
- Fabulous interior and a wonderful example of an industrial conversion
- Exposed brick walls, ceiling beams and wood floors
- Excellent natural light from an abundance of original industrial windows
- Comprehensively fitted and equipped kitchen
- 2 superbly appointed bathrooms (1 en-suite)
- Excellent storage space
- No onward chain



# Flat 6, Gemini House, Bermondsey Street, SE1

Approximate Area = 1433 sq ft / 133.1 sq m

For identification only - Not to scale



**THIRD FLOOR**



Floor plan produced in accordance with RICS Property Measurement Standards incorporating International Property Measurement Standards (IPMS2 Residential). © nichecom 2023. Produced for Danref Cobb. REF: 1060656



## Daniel Cobb

Daniel Cobb Estate Agents, 82-84 Bermondsey Street – SE1 3UD

020 7357 0026 • londonbridge@danielcobb.co.uk • www.danielcobb.co.uk/