



FOR STARTERS



ASKING PRICE
£340,000

MAIN COURSE

Welcome to this stunning semi-detached home, offering three good sized bedrooms and is presented in immaculate condition. Perfectly blending modern elegance with comfortable living, this property boasts a bright and airy open-plan living area, a sleek kitchen with modern units, and three well-proportioned bedrooms. The standout feature is the expansive rear garden—ideal for outdoor entertaining, gardening, or creating a tranquil retreat. With pristine finishes throughout and off-street parking, this home is perfect for families or professionals seeking contemporary living.

Upon entering, you are greeted with a light and airy hall way, with all rooms conveniently coming off. To the left is a downstairs WC, as well as the stairs leading up.

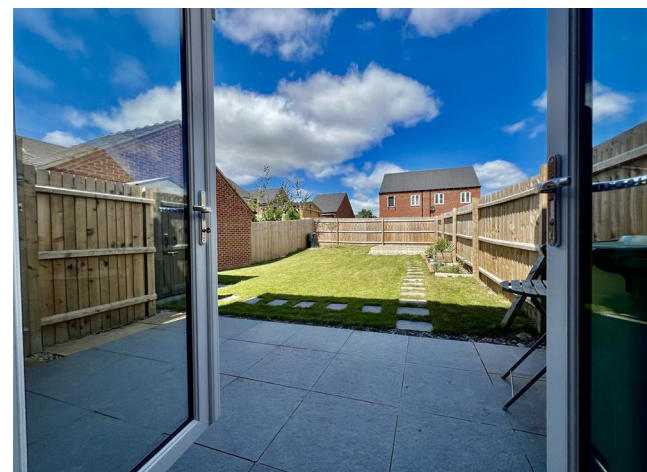
To the right you have a spacious and well equipped kitchen, featuring white units and a matte grey countertop finish. Continuing along the hall is a stunning open plan living and dining area, with french doors onto the sunny garden. This room is brilliant in size, with ample space for your furniture. There is also access to a good sized storage cupboard, perfecting for hanging coats or keeping your household items tucked away!

Upstairs, the three bedrooms are generously sized and thoughtfully designed. The master bedroom features a large window flooding the room with natural light, with a spacious built-in wardrobe and an ensuite bathroom with contemporary fittings. The two additional bedrooms are well-proportioned, ideal for children, guests, or a home



office. The family bathroom is sleek and modern, with a bathtub and elegant tiling.

To the rear features a beautifully designed, low-maintenance garden. Perfect for those who appreciate outdoor living without the hassle, this garden offers a tranquil retreat with minimal upkeep.



KEY INGREDIENTS



Tenure
Freehold



Council Tax
Band - D



EPC
Band -B



North Facing



Mains Electric,
Drainage, Water

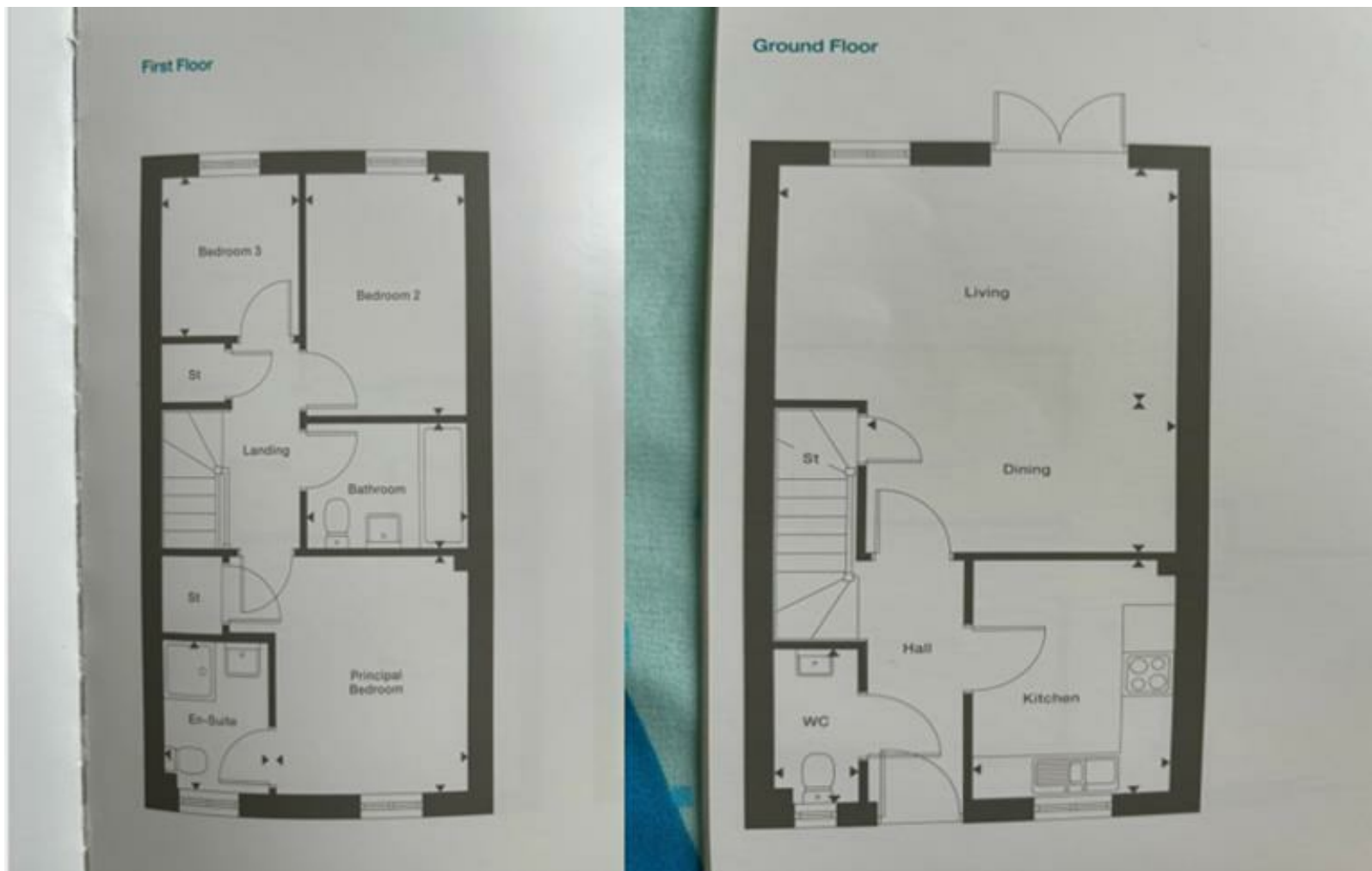


Gas Central Heating



Bishopton Primary
Stratford High

WHY NOT TAKE
A LOOK INSIDE?
GIVE US A CALL
01789 414222



**FOR MORE INFO AND
TO SEE OUR OTHER
LOVELY PROPERTIES
CHECK OUT OUR WEBSITE**

MOVEWITHEDWARDS.CO.UK

**HAVE YOU GOT
A PROPERTY
TO SELL?
WE'D LOVE TO
HAVE A CHAT
01789 414222**

**DID YOU KNOW WE ALSO
DO MORTGAGES.
FOR FREE ADVICE
SPEAK TO
ONE OF OUR
CONSULTANTS**

