

Bluebell

ESTATES



23, Whitehouse Crescent, Burham, Rochester, ME1 3ST

£390,000

About this property.....

ON THE MARKET FOR THE FIRST TIME SINCE IT WAS BUILT IN 1962, this well presented 3-bedroom semi-detached home offers great potential to create your dream living space. Nestled in a peaceful crescent at the foot of the picturesque North Downs, the property boasts a functional layout, perfect for a small family.

The ground floor features an inviting living room, a separate kitchen, a dining room, and a welcoming entrance hall. Upstairs, you'll find three well-proportioned bedrooms and a family shower room.

For those looking for a home they can grow into, the property offers significant potential. You could open up the kitchen and dining area to create a spacious open-plan living space, and the westerly facing rear garden offers plenty of room for a rear extension. Additionally, the loft presents an opportunity for expansion, as seen in many neighbouring homes.

Situation.....

Burham village radiates a strong sense of community, with horses still cantering along its roads from local stables and walkers revelling in the breath-taking beauty of the Kent Downs. If you're seeking a scrumptious meal paired with a fine wine, we highly recommend the newly refurbished Butchers Block. For a more relaxed setting, The Windmill offers unbeatable Sunday roasts and a serene beer garden. Little ones can take advantage of the small village primary school, rated Good by Ofsted in 2018, and relax in the vast recreation ground and park located in the heart of the village. Commuters can easily access the M2 and M20 from the top and bottom of nearby Blue Bell Hill. And for those who crave the hustle and bustle of city life, buses run regularly to Rochester, Chatham, and Maidstone. Plus, Burham village is a mere 23-minute drive (14 miles) from Ebbsfleet International Station, offering frequent trains to London St. Pancras in as little as 19 minutes.











Useful Information.....

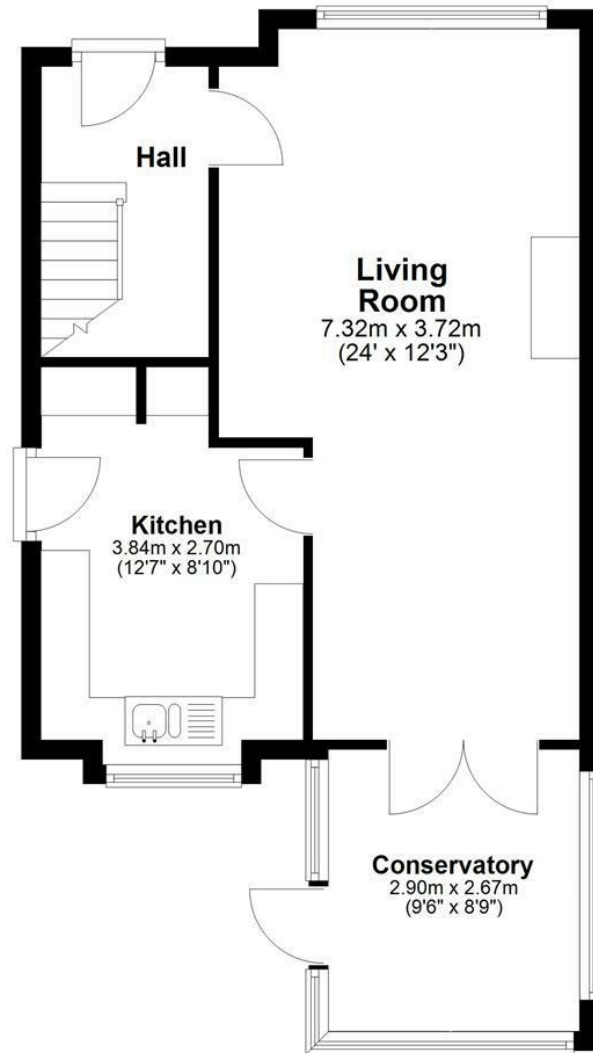
- On the Market for the First Time Since it was Built in 1962
- Three Bedroom Semi Detached Home
- Picturesque Walks Nearby
- Garage and Addition Parking
- 500m Walk to Burham Primary School & Doctors
- Just Over 6 Miles To Rochester Station With Journey Times of 41 Mins To London Bridge



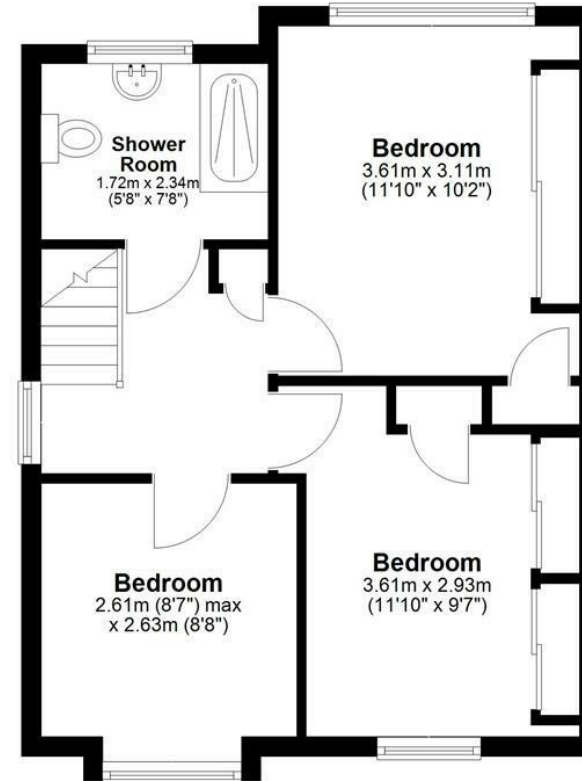


23, Whitehouse Crescent, Burham, Rochester, ME1 3ST

Ground Floor



First Floor



Total area: approx. 88.8 sq. metres (955.3 sq. feet)

Agents Notes

Floor plans produced for illustrative purposes only. The position and sizes of doors, windows, rooms and other items are approximate and no responsibility is taken for any error, omission or mis-statement. These particulars are produced for information only and do not form part of any contract. The agent has not had sight of any title documents. Fixtures, fittings and services not tested.



