



6, Lovett Close, Barming, Maidstone, ME16 9GQ
£330,000

About this property.....

Looking for a MODERN home with PARKING and a PEACEFUL SETTING? This stunning 2-bedroom semi-detached property, built in 2021 by Taylor Wimpey, features a driveway for two cars and is nestled in a quiet cul-de-sac within the Oakapple Place development in Barming, offering contemporary living at its finest.

Step inside to find an inviting entrance hall that leads to a stylish kitchen, a convenient cloakroom, and a bright living-dining room, complete with French doors that open up to a sunny south-facing garden. Upstairs, the main bedroom boasts an en-suite, complemented by a double second bedroom and a modern additional bathroom.

With a spacious rear garden, this home is perfect for those seeking a peaceful yet convenient location. Don't miss out on this fantastic opportunity—arrange a viewing today!

Situation.....

Oakapple Place in Barming is a modern development offering a peaceful yet convenient lifestyle. Situated on the outskirts of Maidstone, this area benefits from a semi-rural setting while still being close to a range of local amenities, including shops, schools, and healthcare facilities. Barming is known for its friendly community feel and excellent transport links, with easy access to the M20 and nearby Barming train station (1.1 miles away) providing direct routes into London in around an hour. The surrounding area features picturesque countryside, ideal for walks and outdoor activities, while Maidstone's bustling town centre is just a short drive away, offering a variety of shopping, dining, and entertainment options.







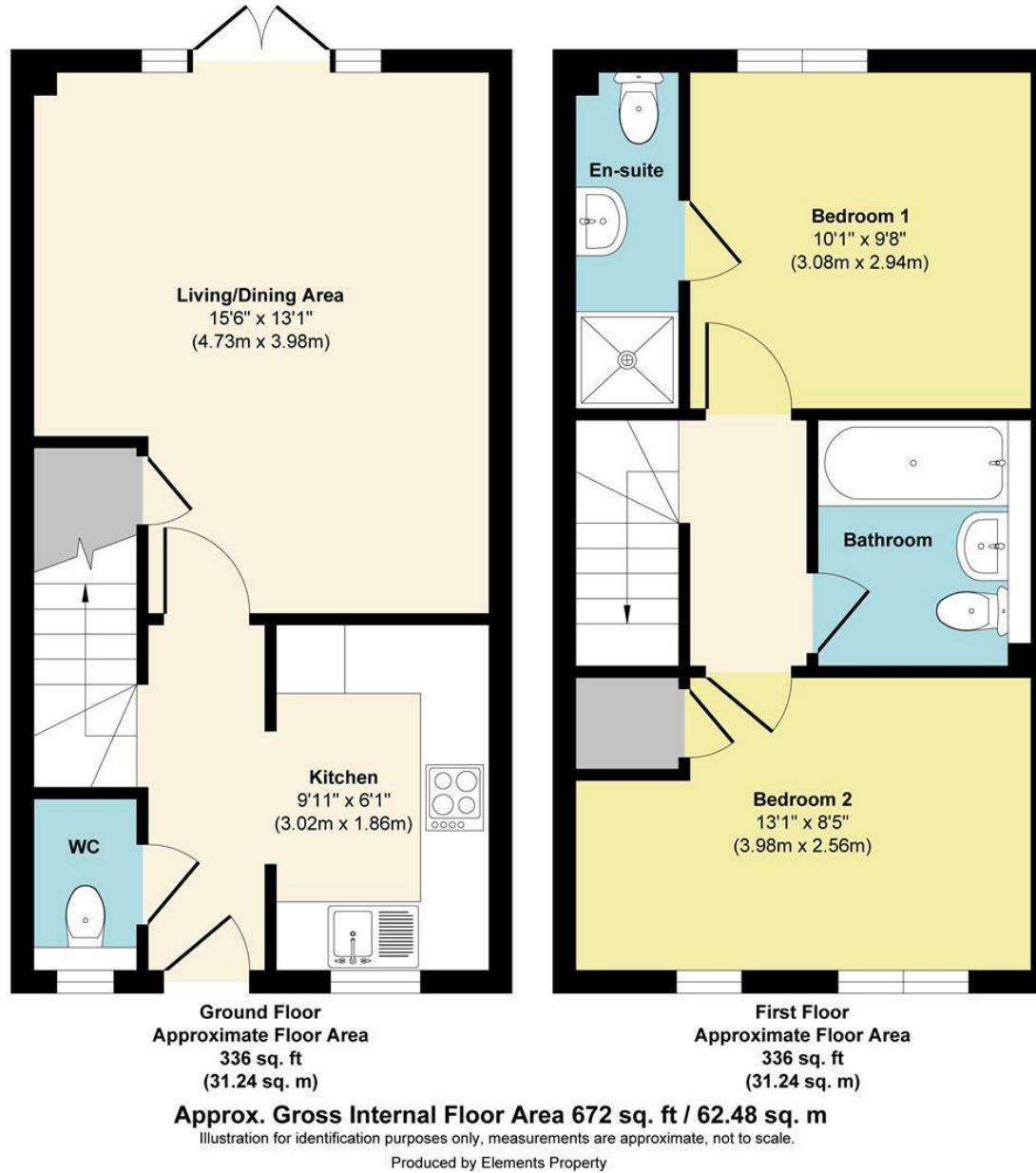


Agents Notes

2 Bedroom Semi-Detached Home Built in 2021 by Taylor Wimpey
Living-Dining Room with French Doors to Large South Facing Garden
Modern Kitchen and Ground Floor Cloakroom
En-suite to Main Bedroom
Double Second Bedroom and additional Bathroom
Quiet Cul-De-Sac Position
3 Minute Drive (1.1) Miles to Barming Station with Trains to London Victoria in Around an Hour



6, Lovett Close, Barming, Maidstone, ME16 9GQ



Agents Notes

Floor plans produced for illustrative purposes only. The position and sizes of doors, windows, rooms and other items are approximate and no responsibility is taken for any error, omission or mis-statement. These particulars are produced for information only and do not form part of any contract. The agent has not had sight of any title documents. Fixtures, fittings and services not tested.



