

Bluebell

ESTATES



7, Hanover Road, Coxheath, Maidstone, ME17 4QH

£415,000

About this property.....

A BEAUTIFULLY PRESENTED 2-bedroom bungalow in prime VILLAGE LOCATION.

Situated in a sought-after location just a 3-minute walk from the village centre, this beautifully presented 2-bedroom bungalow offers spacious, contemporary living with excellent transport links and local amenities.

The large living room features bi-folding doors, providing seamless access to the landscaped, southerly facing rear garden—ideal for outdoor entertaining and relaxation. The high-gloss contemporary kitchen offers a modern space to cook, while the entrance/utility area provides convenience with access to the garden.

A generously sized modern bathroom includes a separate shower as well as a full size bath. The property also boasts extensive frontage, with parking for multiple vehicles.

For those needing access to transport, a bus stop is conveniently located across the road, with East Farleigh train station just 2.6 miles away. Maidstone's bustling town centre is just over 3 miles from the property, providing easy access to a wide range of shopping and dining options.

This is a perfect home for those looking for village charm with modern conveniences.

Situation.....

Coxheath is a charming village located just to the south of Maidstone, offering a delightful mix of rural tranquility and convenience. The village boasts a variety of local amenities, including convenience shops, a village hall, a pharmacy, a traditional butcher, a doctor's surgery, and a health centre, making it a self-sufficient community. For families, Coxheath Primary School is located at the heart of the village and was rated "Good" by Ofsted in 2023, while Cornwallis Academy, the nearest secondary school, also received a "Good" rating in 2023 and is just over a mile away.

Transport links are excellent, with regular bus services connecting Coxheath to Maidstone town centre. The nearest railway station is East Farleigh, located on the Medway Valley Line, offering connections to surrounding towns. For faster routes into London and other key destinations, Maidstone East provides direct mainline services.

Maidstone, the County Town of Kent, is just over 3 miles away and offers a wide range of further facilities, including the popular Fremlin Walk Shopping Centre, Maidstone Museum & Art Gallery, and the beautiful Mote Park. Spanning over 450 acres, Mote Park is a fantastic outdoor space for all ages, featuring grasslands, woodlands, rivers, and a 30-acre lake, perfect for leisurely strolls, dog walking, and outdoor activities.

Coxheath's blend of village charm, local amenities, and easy access to Maidstone's wider offerings makes it an attractive place to live for families, professionals, and retirees alike.









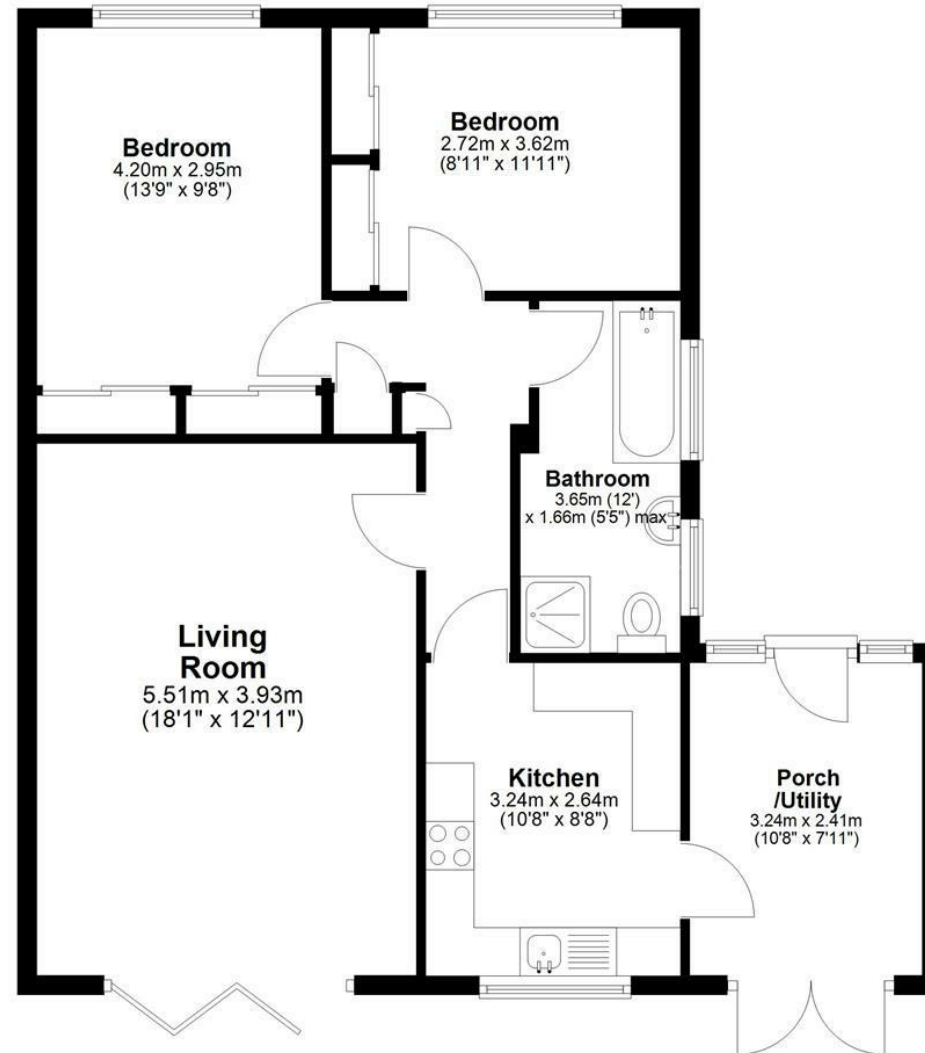
Agents Notes

Beautifully presented 2 bedroom bungalow
Large living room with bi-folding doors to rear garden
Contemporary high-gloss kitchen
Useful entrance/utility area with doors accessing garden
Spacious modern bathroom with separate shower
Extensive frontage offering parking for numerous vehicles
Landscaped southerly facing rear garden
3 Minute walk to village centre amenities
Just over 3 miles to Maidstone's bustling town centre



7, Hanover Road, Coxheath, Maidstone, ME17 4QH

Ground Floor



Total area: approx. 73.6 sq. metres (791.7 sq. feet)

Agents Notes

Floor plans produced for illustrative purposes only. The position and sizes of doors, windows, rooms and other items are approximate and no responsibility is taken for any error, omission or mis-statement. These particulars are produced for information only and do not form part of any contract. The agent has not had sight of any title documents. Fixtures, fittings and services not tested.



