



28, Garden Way, Kings Hill, West Malling, ME19 4FH
£350,000

About this property.....

Searching for a BEAUTIFULLY REFURBISHED home with PARKING and a sunny SOUTH-FACING GARDEN? This stunning 2-bedroom property on Kings Hill is ready for its new owners to move in and start enjoying their dream lifestyle. Built in 1999 and recently updated, the house welcomes you with an inviting entrance hall leading to a stylish, fully-fitted kitchen.

The bright and airy open-plan living and dining area features French doors that open onto a lovely south-facing garden—a blank canvas just waiting for you to transform it into your ideal outdoor retreat.

Upstairs, you'll discover two generous double bedrooms and a sleek, contemporary shower room complete with a spacious walk-in shower.

Outside, there's a front garden and a driveway to the side with space for two cars, providing all the convenience you need for a hassle-free lifestyle.

Situated in the sought-after 'Phase 1' development, this home has the added benefit of no service charges or developer fees. We believe this gorgeous property in a quiet no-through road hang around for long, so we urge you to arrange a viewing early!

Situation.....

Looking for your first home? Kings Hill could be the perfect spot! Located in the heart of Kent, Kings Hill offers the best of modern living with a friendly village vibe. Think beautiful surroundings, landscaped gardens, and lush woodlands – all maintained by a management team so everything stays clean, safe, and well-kept.

Commuting is a breeze here with easy access to the M20, plus regular buses to Tonbridge, Maidstone, and West Malling. If you're heading to London, West Malling station is just over 5 minutes away by car, with direct trains to Victoria, Charing Cross, and London Bridge in as little as 44 minutes.

Kings Hill has plenty to keep you busy! There are great spots to grab a bite such as The Spitfire or Turmeric Square and not one but two Costa Coffees to enjoy to name just a few. Leisure activities include an 18-hole golf course, a David Lloyd gym with Tennis and outdoor heated pool, 24hr gym at Infinity for the more budget minded and for the hardcore fitness fans there is Brigade fitness! If you're starting a family, there are toddler groups, nurseries, and three superb primary schools. Little ones also have a sports park, and plenty of play parks and clubs to enjoy.

Need to do some shopping? Liberty Square has everything you need – from supermarkets like Asda, Aldi, and Waitrose, to hairdressers, a pharmacy, and even doctors and dentists. Plus, the trendy market town of West Malling is just two miles away and has plenty of bars and restaurants to enjoy as well as independent boutique shops.









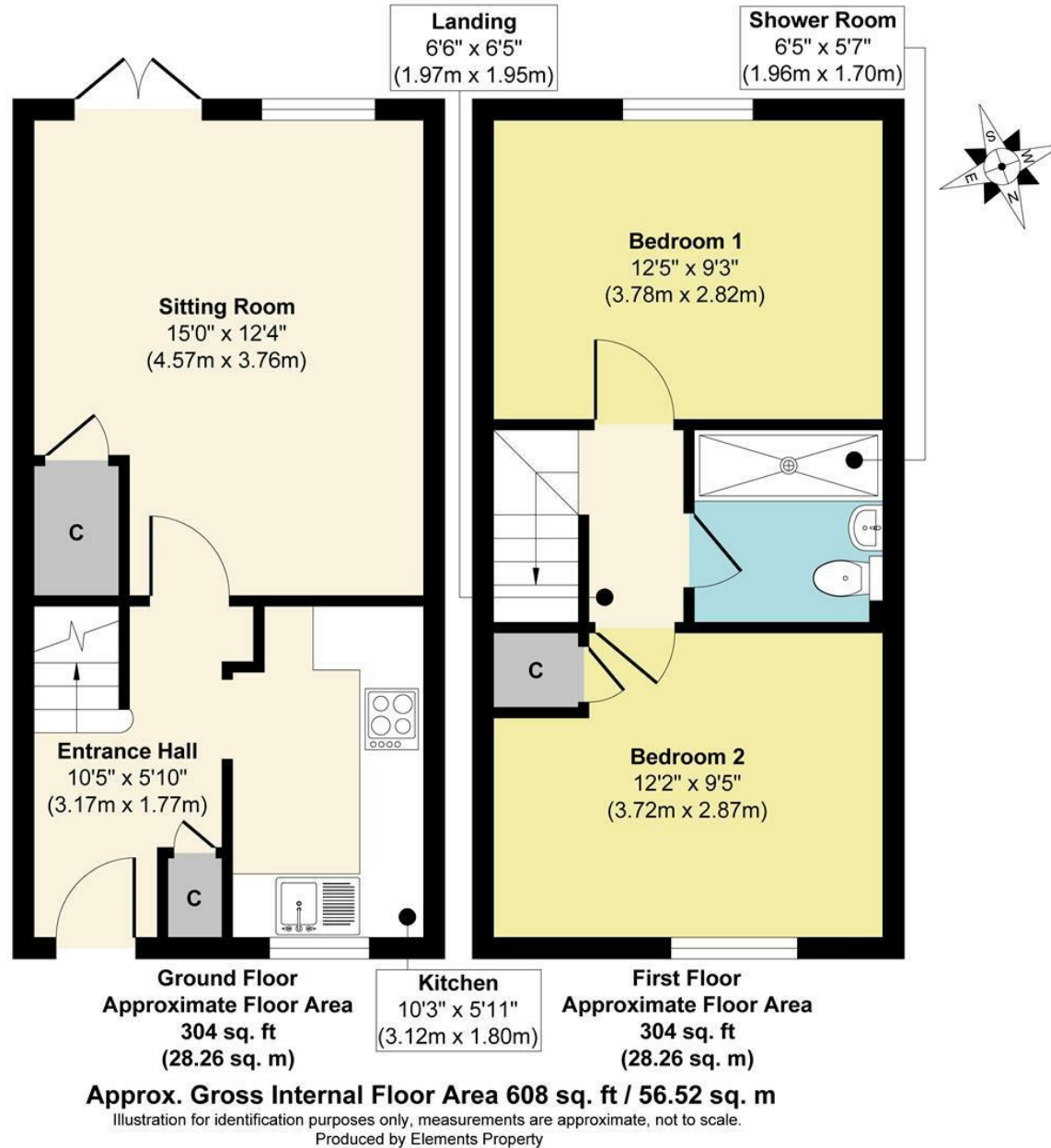
What the owner says.....

We have always loved this location in a quiet cul-de-sac facing a green space and with our own parking. It is close to bridle paths leading to lovely walks, as well as walking distance from shops and amenities – the best of both worlds! Kings Hill, especially phase 1, has always been a friendly and safe environment for families and kids.

It has been the perfect first home for us. We will be sad to leave, but it is the right time for us and life must move on!



28, Garden Way, Kings Hill, West Malling, ME19 4FH



Agents Notes

Floor plans produced for illustrative purposes only. The position and sizes of doors, windows, rooms and other items are approximate and no responsibility is taken for any error, omission or mis-statement. These particulars are produced for information only and do not form part of any contract. The agent has not had sight of any title documents. Fixtures, fittings and services not tested. The property is owned by a close relations of the company Director.



