

Bluebell

ESTATES



19 Kingsdale Court, Hopewell Drive, Chatham, ME5 7NN
Offers In Excess Of £75,000

About this property.....

Bluebell Estates are pleased to offer this chain free, one bedroom, first floor, over 55s retirement apartment.

This spacious warden-assisted property has a bright and airy living-dining room, kitchen, a good sized double bedroom with a built-in wardrobe and a shower room. There is a lift to all floors along with a communal lounge, a launderette and outside, there are communal gardens to enjoy and unallocated parking within the grounds.

When the Development Manager is off duty there is a 24 hour emergency call system too. Kingsdale Court is a popular development for those of you looking for independent living with a bit of reassurance and is within easy reach of the nearby bus stops. So please call us now for more information or to arrange a viewing.

Situation.....

The maritime town of Chatham boasts a multitude of retail, educational and recreational facilities including a bowling alley and theatre. Chatham also boasts the 80-acre Historic dockyard - one of Britains leading maritime heritage destinations with a cold war submarine, WW2 destroyer and Victorian Sloop to step aboard. Next to the dockyard is a retail outlet centre and marina with many restaurants. The town has a mainline train station enabling journey times of around 45 minutes to London and it has road links to junction 3 of the M2 providing access to London and the coast.





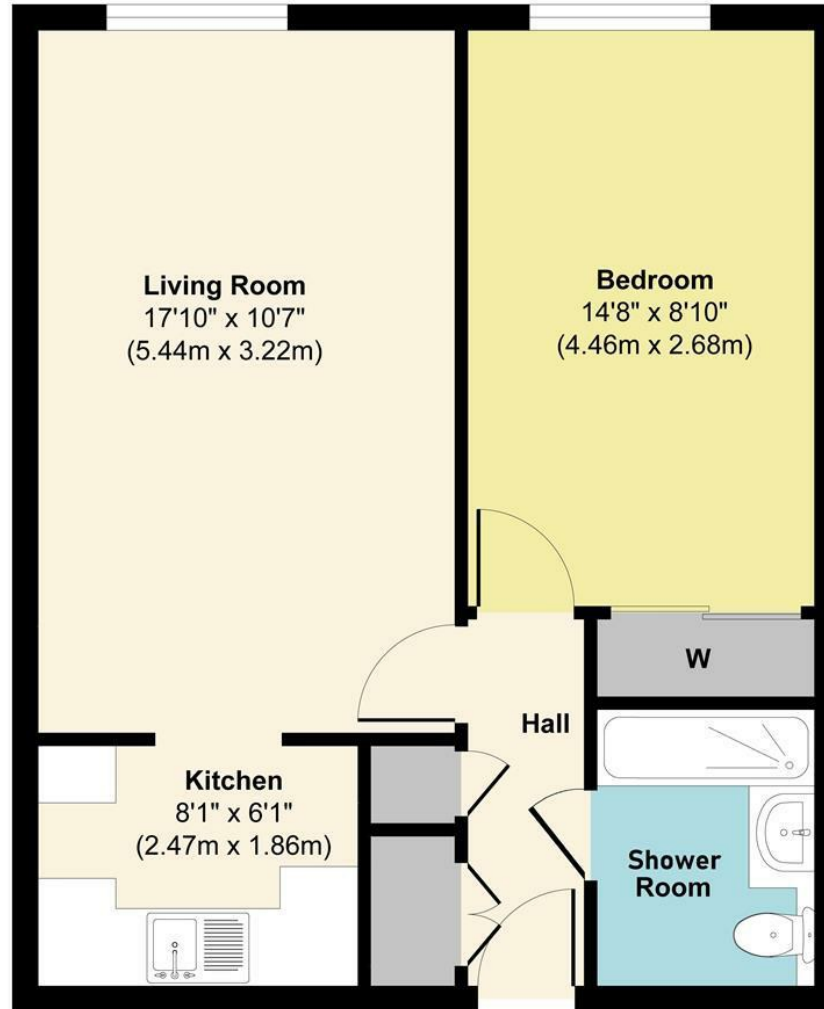




What the owner says.....

This flat is ideal, not just for retired people, but for anybody like me (over 55) who is still working but needs an affordable home. I have absolutely loved living here, and am only moving due to my upcoming marriage, and my partner having her own house. The flat has recently been redecorated, and had fitted carpets, underlay, and vinyl floor covering (in the kitchen and shower room) replaced, together with the hot water heater. The flat is tucked away to the rear of the building away from the main roads, where it's very quiet, and the flat stays cosy and warm. With low ground rent, very reasonable service charge (includes water), and low energy running costs (average of £61 per month over the last year for me), it's been the perfect place to live. There's free use of the laundrette (including tumble dryers), off-street parking, outdoor space to relax in, and I've found people here very friendly and kind."

19 Kingsdale Court, Hopewell Drive, Chatham, ME5 7NN



Floor Plan
Approximate Floor Area
477 sq. ft
(44.40 sq. m)

Approx. Gross Internal Floor Area 477 sq. ft / 44.40 sq. m

Illustration for identification purposes only, measurements are approximate, not to scale.

Produced by Elements Property

Agents Notes

Floor plans produced for illustrative purposes only. The position and sizes of doors, windows, rooms and other items are approximate and no responsibility is taken for any error, omission or mis-statement. These particulars are produced for information only and do not form part of any contract. The agent has not had sight of any title documents. Fixtures, fittings and services not tested.

