

Bluebell

ESTATES



5a, High Street, Aylesford, ME20 7AX

£295,000

About this property.....

Located along the High Street, in the picturesque village of Aylesford, is this immaculately presented 2/3 bedroom home. The property is spread across 3 floors, making the most of all the space provided.

Entering the property you are greeted with a entrance hall, ideal for hanging coats, and storing shoes after an afternoon stroll. Off of the entrance hall is a handy cloakroom, and the 3rd bedroom. The current owners use this room as a home office, however, it can be used to suit your needs such as a gym, or as a bedroom.

Upstairs, you step into open plan living, with a kitchen, dining space and living room, perfect for entertaining guests. The front bay window allows natural sunlight to beam through, really opening up the space. The second floor consists of a modern family bathroom, and 2 good sized bedrooms.

The property also benefits from allocated parking to the rear.

With river walks close by, we don't expect this property to hang around, so call us for more information!

Situation.....

Aylesford village is a true gem that we can't help but adore! It exudes an incredible community spirit and boasts an array of historic properties and enticing dining spots. Our top pick is The Hengist, a newly refurbished restaurant, bar, and brasserie with a delightful al-fresco terrace. Alternatively, you can grab a pint and some pub grub at The Bush.

You'll have endless options for scenic strolls, with riverside walks, countryside hikes, and The Friars, an ancient religious house with a cafe, farmers market, and tranquil gardens right on the village's edge. Aylesford boasts a good rated primary school in the centre of the village and an outstanding rated primary just outside the village along with a secondary school in the wider Aylesford area. Shopaholics will relish the proximity of an M&S food store, Sainsbury's, and an Aldi just up the road.

Commuters are well-catered to, with London-bound services (changing at Strood) from Aylesford station, while Ebbsfleet International is just 23 minutes away by car, with trains to London St. Pancras in a mere 19 minutes. Plus, both the M2 and M20 motorways are a stone's throw away. And if all that isn't enough, Maidstone's County Town is just 4 miles away, offering a plethora of retail, educational, and recreational facilities.









What the owner says.....

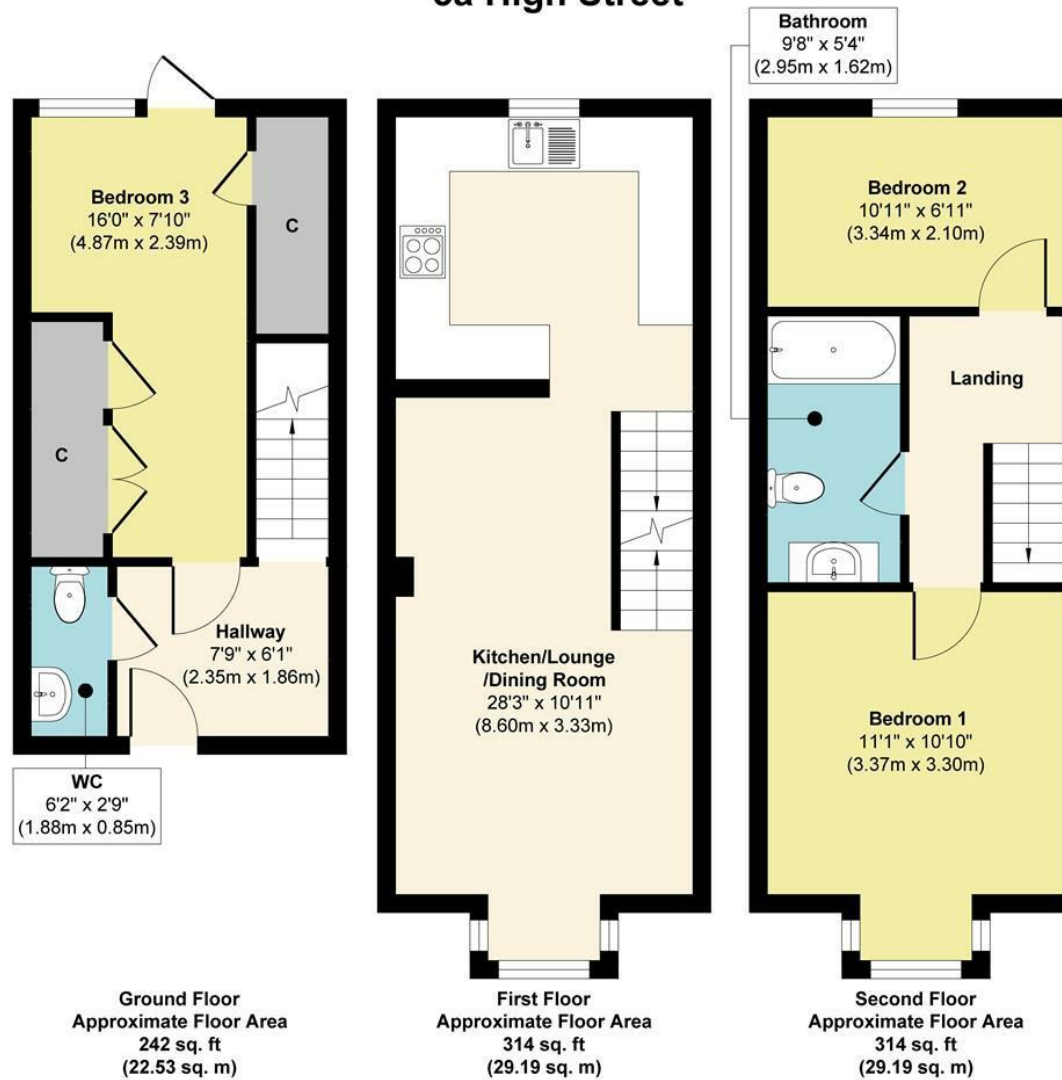
This is a lovely home with pubs, a village shop, picturesque walks by the river and green spaces all around. There are multiple parks within walking distance, and good schools nearby. It has a real community feel, and we aren't moving far as we really love the village. You have great access to motorways and the parking at the rear of the property is ideal. The house is bright and spacious with plenty of storage and we hope the next owner enjoys it as much as we have





5a, High Street, Aylesford, ME20 7AX

5a High Street



Approx. Gross Internal Floor Area 870 sq. ft / 80.91 sq. m

Illustration for identification purposes only, measurements are approximate, not to scale.

Produced by Elements Property

Agents Notes

Floor plans produced for illustrative purposes only. The position and sizes of doors, windows, rooms and other items are approximate and no responsibility is taken for any error, omission or mis-statement. These particulars are produced for information only and do not form part of any contract. The agent has not had sight of any title documents. Fixtures, fittings and services not tested.



