

Bluebell
ESTATES



Flat 32 Leander Heights, Mill Wood, Maidstone, ME14 2FS
£210,000

About this property.....

This fantastic one bedroom apartment is perfect for anyone looking to get onto the property ladder.

Located on the 4th floor, the property is approximately 18 months old so you can just move in and unpack. The open plan living - dining - kitchen area leads onto the balcony but if you like being outside, this building has a superb roof top garden laid out over 3 levels with different seating areas and far reaching views, along with a further communal area outside the apartments to enjoy.

The property also has an underground parking space so there's no need to defrost the car on those chilly winter mornings!

The property has the remainder of a long lease of 999 years and there is no ground rent to pay either so for more information or to arrange a viewing, please get in touch.

Service Charge is £1000 per year.

Situation.....

Maidstone, the county town of Kent, has a vibrant mix of unique stores and popular high street brands. Foodies will also be spoilt for choice with a range of options from traditional afternoon tea to fine dining experiences. The town's buzzing nightlife is another highlight, with a variety of pubs, bars and entertainment venues to suit all tastes.

Outdoor enthusiasts will find plenty to keep them busy too, from cruising down the river on the Kentish Lady to exploring the many cycling and walking routes that showcase the region's charm and heritage. Families will love attractions such as Kent Life Heritage Farm and the 450-acre Mote Park, offering unforgettable experiences for all ages.

Commuting to London is a breeze with direct train links from Maidstone East and Maidstone West stations, with journey times as short as 51 minutes. The town also has excellent road connections, with easy access to the M20 motorway junctions 5 to 7 providing routes to London and the coast.







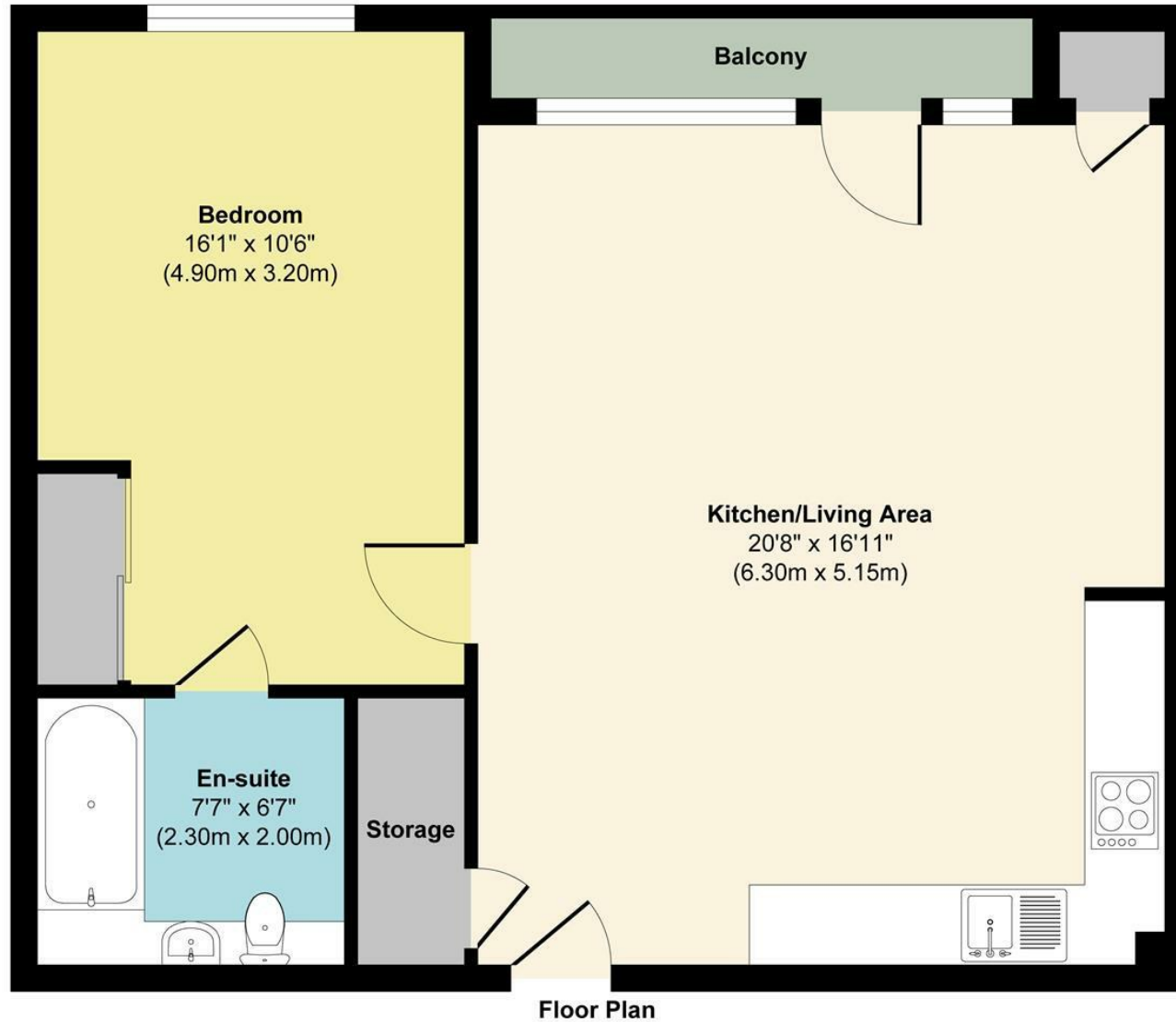


What the owner says.....

This property was the perfect first home for me, and was so easy to make a house a home. It will always hold a special place in my heart and hold many memories, particularly with friends and family. I fell in love with the neutral colours within the property that made it so easy to style and live within. The close links to different areas of Kent means that I am never too far away from a good day or night out!



Flat 32 Leander Heights, Mill Wood, Maidstone, ME14 2FS



Approx. Gross Internal Floor Area 602 sq. ft / 56.02 sq. m

Illustration for identification purposes only, measurements are approximate, not to scale.

Produced by Elements Property

Agents Notes

Floor plans produced for illustrative purposes only. The position and sizes of doors, windows, rooms and other items are approximate and no responsibility is taken for any error, omission or mis-statement. These particulars are produced for information only and do not form part of any contract. The agent has not had sight of any title documents. Fixtures, fittings and services not tested.

