

Bluebell

ESTATES



17a, Willington Street, Maidstone, ME15 8JW

£1,450 PCM

About this property.....

This three bedroom detached property sits opposite Mote Park and is available to rent immediately on an unfurnished basis

Comprising a living - dining room, kitchen- breakfast room with utility area and cloakroom on the ground floor and three bedrooms, one with an en-suite and a family bathroom upstairs.

The property is ideally located for access into Maidstone town centre and there are a number of nearby primary and secondary schools to choose from.

There is garage and driveway to the front providing parking too. Please contact us for more information or to arrange a viewing.

Regrettably the landlord will not accept smokers or tenants with pets.

Situation.....

Maidstone, the county town of Kent, is a shopper's paradise with a vibrant mix of unique stores and popular high street brands. Foodies will also be spoilt for choice with a range of options from traditional afternoon tea to fine dining experiences. The town's buzzing nightlife is another highlight, with a variety of pubs, bars and entertainment venues to suit all tastes.

Outdoor enthusiasts will find plenty to keep them busy too, from cruising down the river on the Kentish Lady to exploring the many cycling and walking routes that showcase the region's charm and heritage. Families will love attractions such as Kent Life Heritage Farm and the 450-acre Mote Park, offering unforgettable experiences for all ages.

Maidstone is home to several primary and secondary schools, including four grammar schools. Commuting to London is a breeze with direct train links from Maidstone East and Maidstone West stations, with journey times as short as 51 minutes. The town also has excellent road connections, with easy access to the M20 motorway junctions 5 to 7 providing routes to London and the coast.









SECURITY DEPOSIT = FIVE WEEKS' RENT

MINIMUM INCOME REQUIRED = £43,500

TENANTS WITH PETS = NOT ACCEPTABLE

TENANTS WHO SMOKE = NOT ACCEPTABLE

HOLDING DEPOSIT = ONE WEEKS' RENT

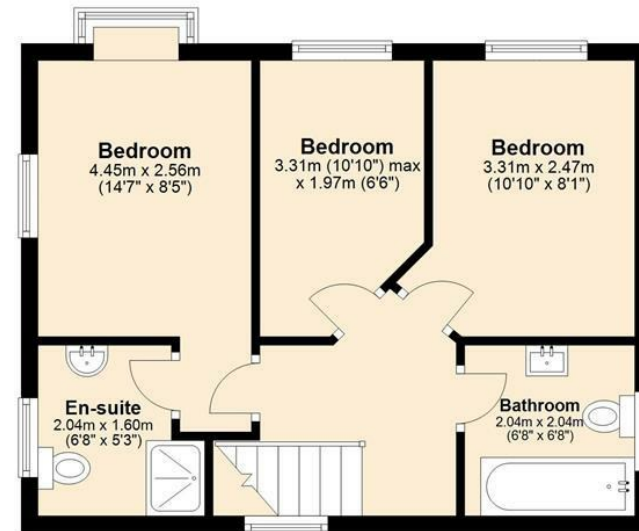
This is to reserve a property. Please Note: This will be withheld if any relevant person (including any guarantor(s)) withdraw from the tenancy, fail a Right-to-Rent check, provide materially significant false or misleading information, or fail to sign their tenancy agreement (and / or Deed of Guarantee) within 15 calendar days (or other Deadline for Agreement as mutually agreed in writing).

17a, Willington Street, Maidstone, ME15 8JW

Ground Floor



First Floor



Total area: approx. 94.4 sq. metres (1015.8 sq. feet)

Agents Notes

Floor plans produced for illustrative purposes only. The position and sizes of doors, windows, rooms and other items are approximate and no responsibility is taken for any error, omission or mis-statement. These particulars are produced for information only and do not form part of any contract. The agent has not had sight of any title documents. Fixtures, fittings and services not tested.

