



26, Moncktons Lane, Maidstone, ME14 2PY
£450,000

About this property.....

Set on a QUIET PRIVATE TRACK but just moments from Maidstone's vibrant town centre, this delightful 16-year-old one-owner home offers a blend of modern comfort and peaceful surroundings.

Boasting a spacious principal bedroom with an en-suite, generously sized second bedroom, third bedroom as well as a versatile ground floor study/bedroom, this home caters perfectly to family living. The inviting living-dining room provides a welcoming space for relaxation and entertaining, while the separate kitchen-breakfast room and utility room add practicality to daily routines.

Externally the gardens to the front and rear are well presented and reasonably low maintenance, while the long integral garage and block paved driveway ensure ample parking. There is no onward chain with this lovely home so the sellers can facilitate a quick move if needed.

Situation.....

Nestled down a private track, this property offers a secluded location within easy reach of urban amenities and transportation links. Maidstone East station is a mere 3-minute drive (0.8 miles) away, providing swift access to London Bridge in just 52 minutes and Victoria in 1 hour and 3 minutes. For commuters seeking further connectivity, Ebbsfleet station is a convenient 22-minute drive (17 miles) distant, offering high-speed trains to London St Pancras in a mere 19 minutes. Nature enthusiasts will delight in the proximity to the River Medway, just a few minutes' walk away, offering scenic pathways for walks, runs, and bike rides along the riverbanks. Watersport aficionados can indulge in rowing and kayaking activities, with clubs conveniently situated nearby. Families will appreciate the proximity to two Ofsted-rated Good primary schools within a 5-minute drive, alongside an Ofsted-rated Good secondary school and girls' grammar just a stone's throw further. Additionally, the vibrant hub of Maidstone, with its multitude of shopping, dining, and entertainment options, is just minutes away by car, ensuring residents enjoy the perfect blend of tranquility and urban convenience.









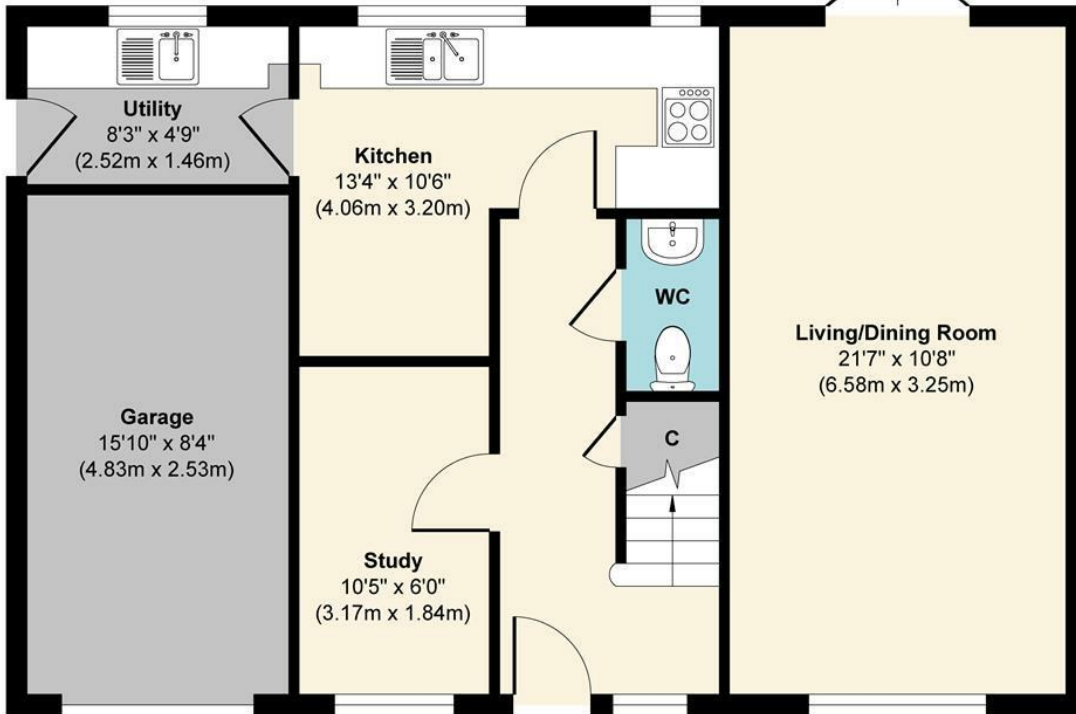
Agents Notes

3/4 Bedroom Detached Home Set Down Quiet Private Track
Built Around 16 years ago by Current Owner
Ground Floor Study/Fourth Bedroom
Living-Dining Room and Kitchen-Breakfast Room
Utility Room and Cloakroom
En-suite to Main Bedroom
Longer than usual Integral Garage and Driveway for 2 Cars
3-minute Drive to Maidstone East station with Trains to London Bridge in 52 Minutes
22-Minute Drive (17 miles) to Ebbsfleet, offering high-speed Trains to London St Pancras in 19 minutes

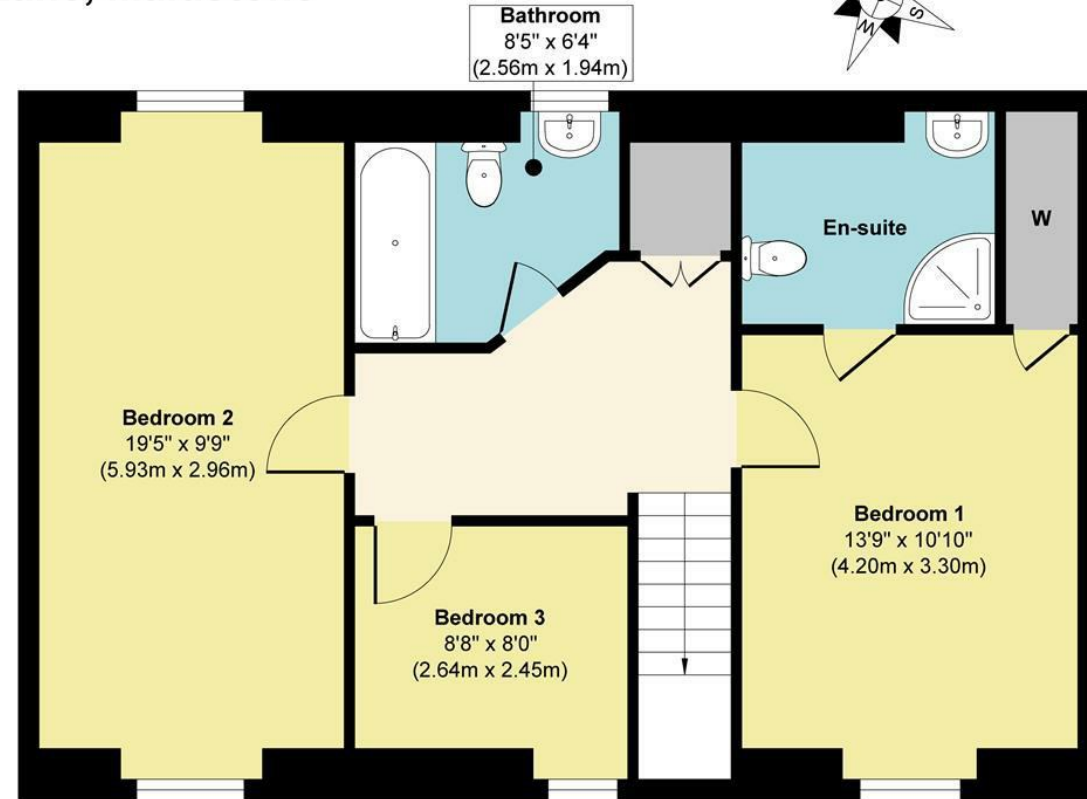


26, Moncktons Lane, Maidstone, ME14 2PY

26 Moncktons Lane, Maidstone



Ground Floor
Approximate Floor Area
698 sq. ft
(64.85 sq. m)



First Floor
Approximate Floor Area
661 sq. ft
(61.41 sq. m)

Approx. Gross Internal Floor Area 1359 sq. ft / 126.26 sq. m

Illustration for identification purposes only, measurements are approximate, not to scale.

Produced by Elements Property

Agents Notes

Floor plans produced for illustrative purposes only. The position and sizes of doors, windows, rooms and other items are approximate and no responsibility is taken for any error, omission or mis-statement. These particulars are produced for information only and do not form part of any contract. The agent has not had sight of any title documents. Fixtures, fittings and services not tested.



