



3, Foxglove Rise, Maidstone, ME14 2AF
£380,000

About this property.....

Welcome to Foxglove Rise, Maidstone - a charming extended home that offers the perfect blend of comfort and style. This delightful property boasts a spacious light filled living-dining room boasts bi-folding doors to the garden, ideal for entertaining guests or simply relaxing with your loved ones.

With three bedrooms, there's plenty of space for the whole family to unwind and recharge. The two bathrooms in this house provide convenience, ensuring that busy mornings run smoothly and evenings end in relaxation.

One of the standout features of this property is the parking space available for up to three vehicles. Say goodbye to the hassle of searching for parking - you'll have plenty of room for your cars right at your doorstep with a garage and driveway for 2 cars.

Situation.....

Set in a peaceful location a minutes walk away from the River Medway, this property offers a secluded location within easy reach of urban amenities and transportation links. Maidstone East station is a mere 3-minute drive (0.8 miles) away, providing swift access to London Bridge in just 52 minutes and Victoria in 1 hour and 3 minutes. For commuters seeking further connectivity, Ebbsfleet station is a convenient 22-minute drive (17 miles) distant, offering high-speed trains to London St Pancras in a mere 19 minutes. Nature enthusiasts will delight in the proximity to the River Medway, just a minutes walk away, offering scenic pathways for walks, runs, and bike rides along the riverbanks. Watersport aficionados can indulge in rowing and kayaking activities, with clubs conveniently situated nearby. Families will appreciate the proximity to two Ofsted-rated Good primary schools within a 5-minute drive, alongside an Ofsted-rated Good secondary school and girls' grammar just a stone's throw further. Additionally, the vibrant hub of Maidstone, with its multitude of shopping, dining, and entertainment options, is just minutes away by car, ensuring residents enjoy the perfect blend of tranquility and urban convenience.











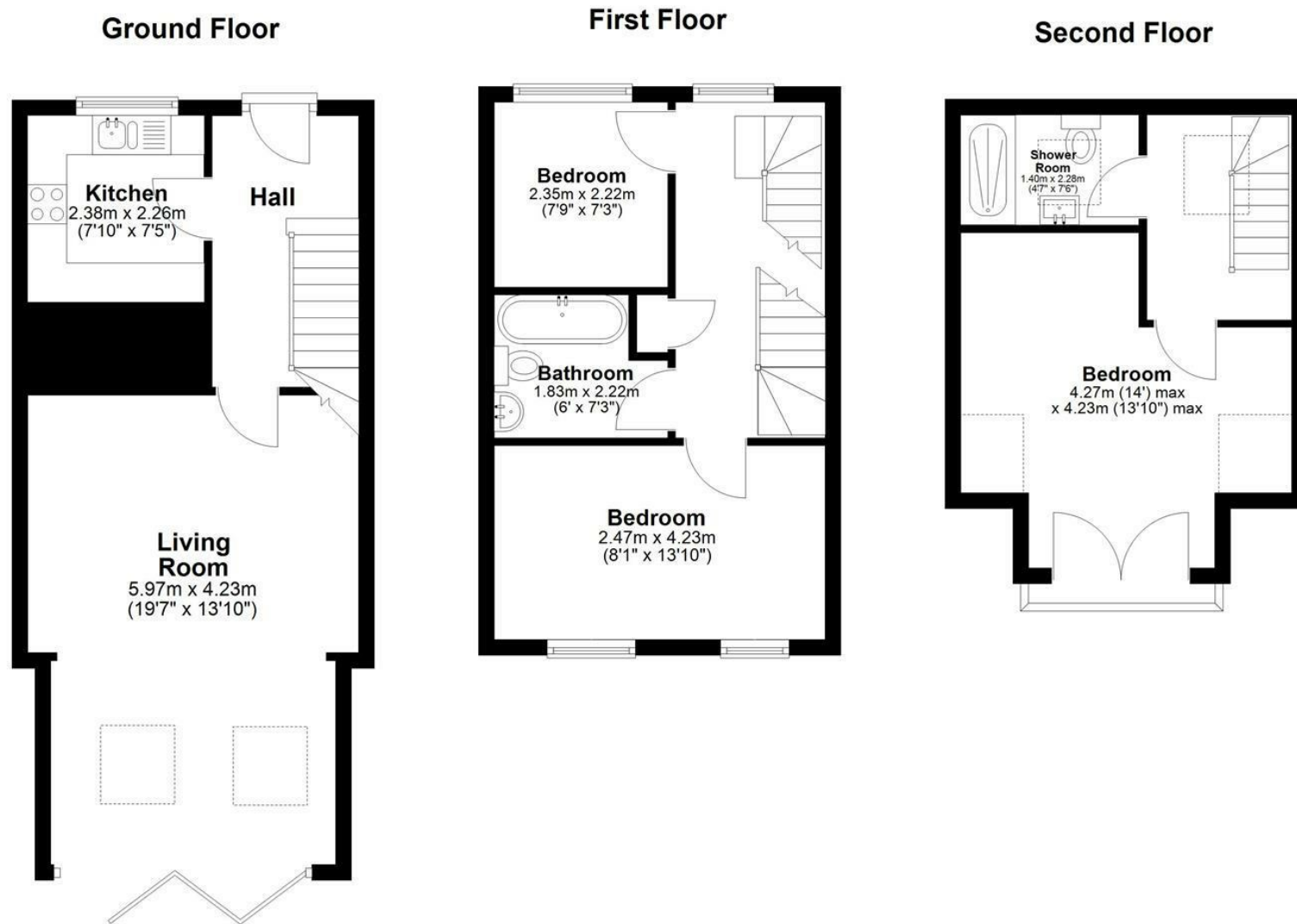
What the owner says.....

I have lived in this home for 19 years and have loved every moment of it. My girls were born and raised here and I couldn't have had a better location, the house has grown as well as I added the extension and loft conversion a few years ago and now its time for us to move on. From Whatman park to walk in and enjoy the social events to wandering down the river to Allington lock for a coffee and a cake, I will struggle to find a location that can offer so much so close. I really hope the new owners will love the house, the area and the walks as much as I have.





3, Foxglove Rise, Maidstone, ME14 2AF



Total area: approx. 90.3 sq. metres (972.3 sq. feet)

Agents Notes

Floor plans produced for illustrative purposes only. The position and sizes of doors, windows, rooms and other items are approximate and no responsibility is taken for any error, omission or mis-statement. These particulars are produced for information only and do not form part of any contract. The agent has not had sight of any title documents. Fixtures, fittings and services not tested.



