



12, Longfields Drive, Bearsted, Maidstone, ME14 4PD  
Offers In Excess Of £375,000



## About this property.....

Bluebell Estates proudly presents this lovely three-bedroom link detached home, nestled in a tranquil no-through road within Bearsted Park. Perfectly suited for families, the property benefits from its proximity to a range of nearby primary and secondary schools. Additionally, commuters will appreciate the convenience of Bearsted mainline station located just 1km away, as well as easy access to the M20 motorway.

Boasting a spacious living room, a welcoming kitchen-dining area that seamlessly extends to the south-easterly rear garden, three well-appointed bedrooms (one featuring a built-in wardrobe), and a bathroom, this home offers comfortable and functional living spaces. Completing the ensemble is a garage situated to the side, accompanied by a driveway capable of accommodating two vehicles.

Given its desirable attributes and absence of chain, we anticipate high demand for this property. Don't miss the opportunity - contact us today to schedule a viewing.

## Situation.....

This home is located in a quiet cul-de-sac on the Bearsted Park development just 0.7 miles from the picturesque village green, where locals gather to play cricket and classic car meetings are held. It's a place where you can indulge in the finest dining options, including the Michelin-listed Fish on the Green and Oak on the Green - a gastropub that boasts a wide selection of ales. The White Horse, a large pub with roaring log fires, is situated just across the green, making it a perfect spot for a relaxing meal. Parents will be delighted to know that both local schools, Roseacre and Madginford, have been rated outstanding and good by Ofsted. If you're a golf enthusiast, the village offers the convenience of an 18-hole course and if you enjoy countryside walks you can access public footpaths that connect to the North Downs Way a few moments away. Commuters will appreciate the direct services to London Victoria, taking just over an hour from Bearsted station which is just 2 minutes (0.6 miles) away by car, or high speed services to London St Pancras in 19 minutes from Ebbsfleet station which is a 29 minute drive away.



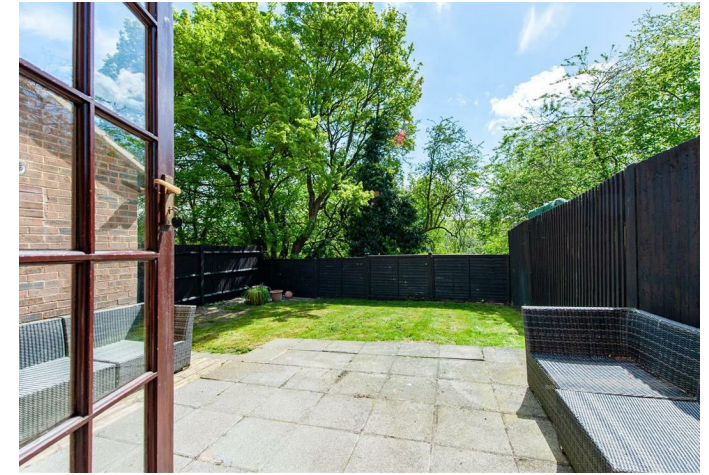












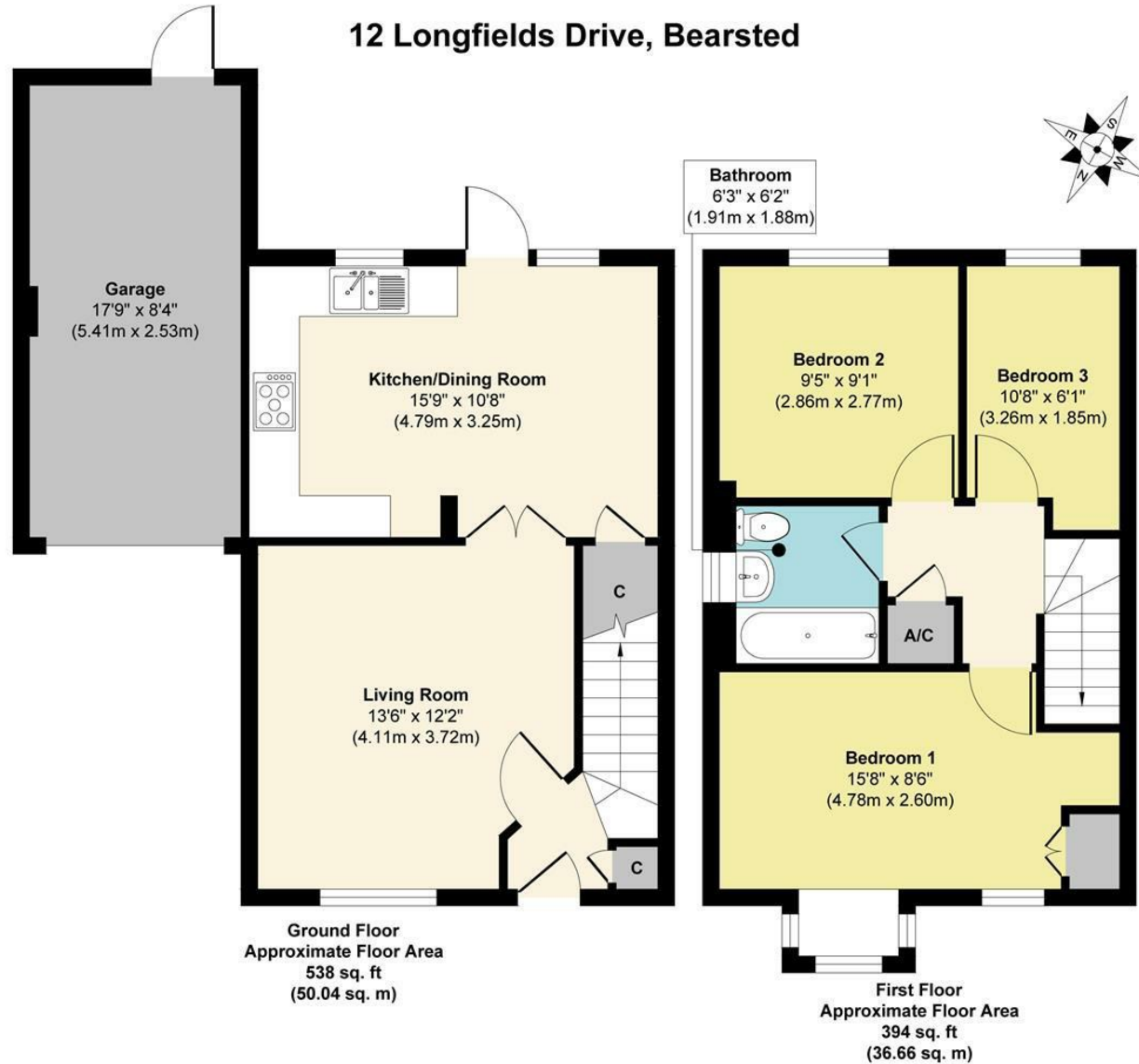
## Useful Information.....

Three Bedroom Link Detached House  
Chain Free  
Open Plan Kitchen-Dining Room  
South Easterly Facing Rear Garden  
Garage & Driveway  
Cul De Sac Location  
1Km Walk from Mainline Station  
1.5Km To Ofsted Rated Outstanding Roseacre Junior School & School Of Science & Technology  
Maidstone

We are legally required to inform you that this property is owned by a relation to one of our staff members at Bluebell Estates.

# 12, Longfields Drive, Bearsted, Maidstone, ME14 4PD

## 12 Longfields Drive, Bearsted



**Approx. Gross Internal Floor Area 932 sq. ft / 86.70 sq. m**

Illustration for identification purposes only, measurements are approximate, not to scale.

Produced by Elements Property

### Agents Notes

Floor plans produced for illustrative purposes only. The position and sizes of doors, windows, rooms and other items are approximate and no responsibility is taken for any error, omission or mis-statement. These particulars are produced for information only and do not form part of any contract. The agent has not had sight of any title documents. Fixtures, fittings and services not tested.





