

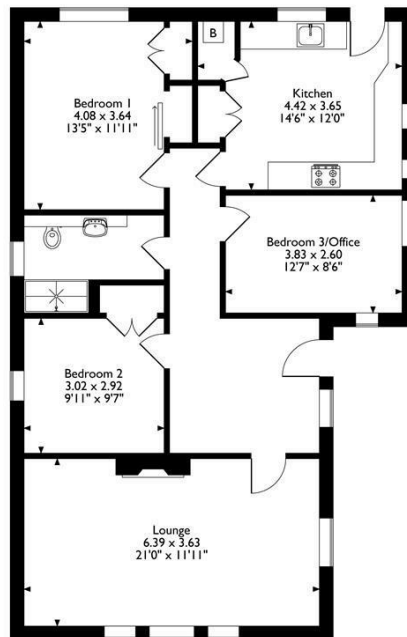
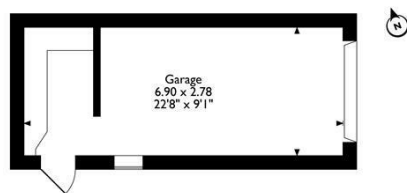


1 STAMFORD LANE
WARMINGTON, PE8 6TW

£1,350 PCM

A detached 2/3 bedroom bungalow located in the sought after village of Warmington. Close to the market town of Oundle and the A605 which provides access to the A14 and A1, each only 10 minutes drive away.

Woodford & Co.
PROPERTY CONSULTANTS & AUCTIONEERS



Ground Floor

Total Approx Gross Internal Floor Area = 114 Sq/m - 1228 Sq/ft
FOR IDENTIFICATION PURPOSES ONLY - NOT TO SCALE - REF = 8621389 - © www.homeplansepcc.co.uk 2016



Energy Efficiency Rating		
	Current	Potential
Very energy efficient - lower running costs		
(92 plus) A		
(81-91) B		
(69-80) C		
(55-68) D	61	77
(39-54) E		
(21-38) F		
(1-20) G		
Not energy efficient - higher running costs		
England & Wales	EU Directive 2002/91/EC	

Agents Note: Whilst every care has been taken to prepare these particulars, they are for guidance purposes only. All measurements are approximate and are for general guidance purposes only and whilst every care has been taken to ensure their accuracy, they should not be relied upon and potential buyers/tenants are advised to recheck the measurements

Woodford and Company
12 Market Place
Oundle
Peterborough
PE8 4BQ

01832 274732
info@woodfordandco.com

Woodford & Co.
PROPERTY CONSULTANTS & AUCTIONEERS