

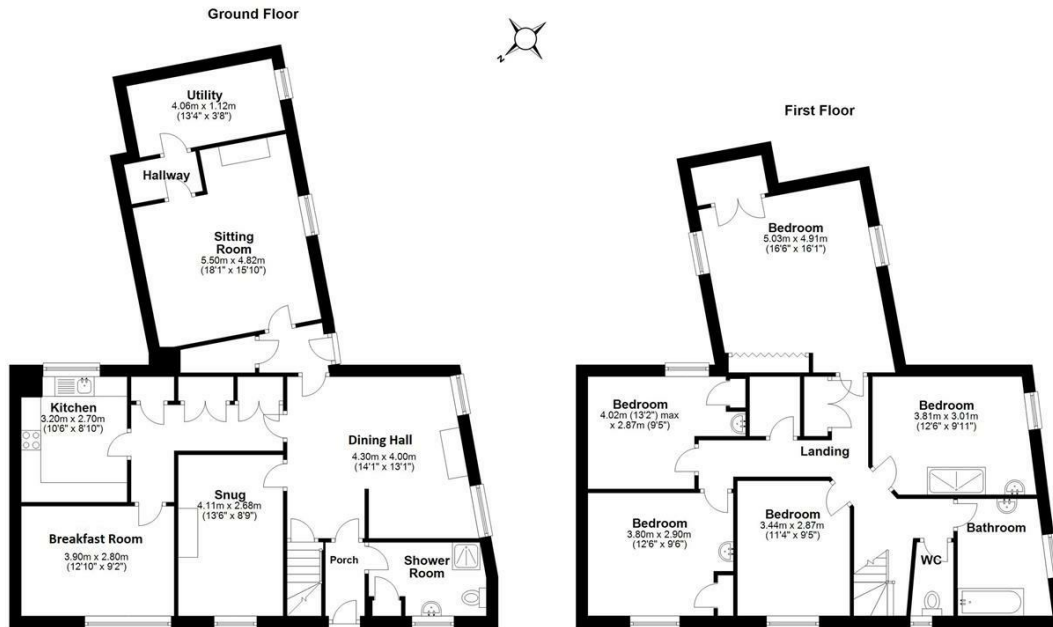


LOWICK LANE
ALDWINCLE, NN14 3EE

£600,000
FREEHOLD

A charming stone house with versatile living space and delightful gardens, set along a tranquil lane and overlooking the Nene valley. Last sold in 1947. No chain.

Woodford & Co.
PROPERTY CONSULTANTS & AUCTIONEERS



Total Approx Gross Internal Floor Area = 193 sq/m (2075 sq/ft)
FOR IDENTIFICATION PURPOSES ONLY - NOT TO SCALE



Energy Efficiency Rating		
	Current	Potential
Very energy efficient - lower running costs		
(92 plus) A		
(81-91) B		
(69-80) C		
(55-68) D		
(39-54) E		
(21-38) F		
(1-20) G		
Not energy efficient - higher running costs		
England & Wales		
		EU Directive 2002/91/EC

Agents Note: Whilst every care has been taken to prepare these particulars, they are for guidance purposes only. All measurements are approximate and are for general guidance purposes only and whilst every care has been taken to ensure their accuracy, they should not be relied upon and potential buyers/tenants are advised to recheck the measurements

Woodford and Company
 12 Market Place
 Oundle
 Peterborough
 PE8 4BQ

01832 274732
 info@woodfordandco.com

Woodford & Co.
 PROPERTY CONSULTANTS & AUCTIONEERS