



OPEN DAY

Saturday 29th June
11am to 1pm

ALL WELCOME

We will have several 2 Bedroom Apartments available for viewing, along with the facilities and the communal grounds.

Prices from £125,000 to £180,000



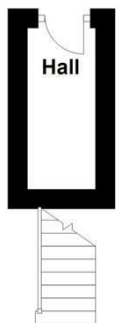
2 TYNE HOUSE
Oundle, PE8 4FE

£165,000
LEASEHOLD

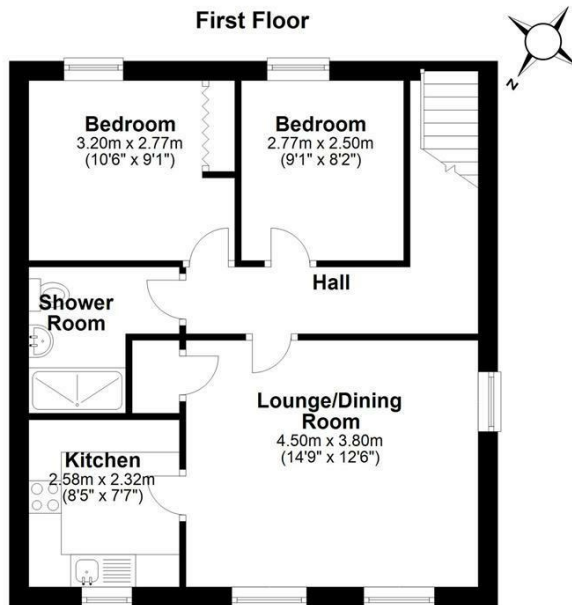
A fabulous first-floor apartment with beautifully updated, two bedroom accommodation, set upon a carefully managed scheme for those over the age of 55. OPEN DAY 29th June.

Woodford & Co.
PROPERTY CONSULTANTS & AUCTIONEERS

Ground Floor



First Floor



Total Approx Gross Internal Floor Area = 57 sq/m (610 sq/ft)
 FOR IDENTIFICATION PURPOSES ONLY - NOT TO SCALE

Energy Efficiency Rating		
	Current	Potential
Very energy efficient - lower running costs		
(92 plus) A		
(81-91) B		
(69-80) C		
(55-68) D		
(39-54) E		
(21-38) F		
(1-20) G		
Not energy efficient - higher running costs		
England & Wales	EU Directive 2002/91/EC	

Agents Note: Whilst every care has been taken to prepare these particulars, they are for guidance purposes only. All measurements are approximate and are for general guidance purposes only and whilst every care has been taken to ensure their accuracy, they should not be relied upon and potential buyers/tenants are advised to recheck the measurements

Woodford and Company
 12 Market Place
 Oundle
 Peterborough
 PE8 4BQ

01832 274732
 info@woodfordandco.com

Woodford & Co.
 PROPERTY CONSULTANTS & AUCTIONEERS