



## 4 MEDWAY HOUSE

OUNDLE, PE8 4FE

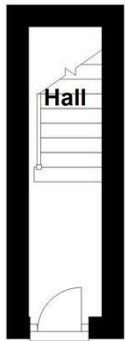
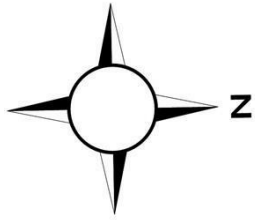
£129,950  
LEASEHOLD

A well presented, first floor apartment in a managed scheme for the over 55s. The property offers two-bedroom accommodation, with parking and set within well-maintained, communal grounds.

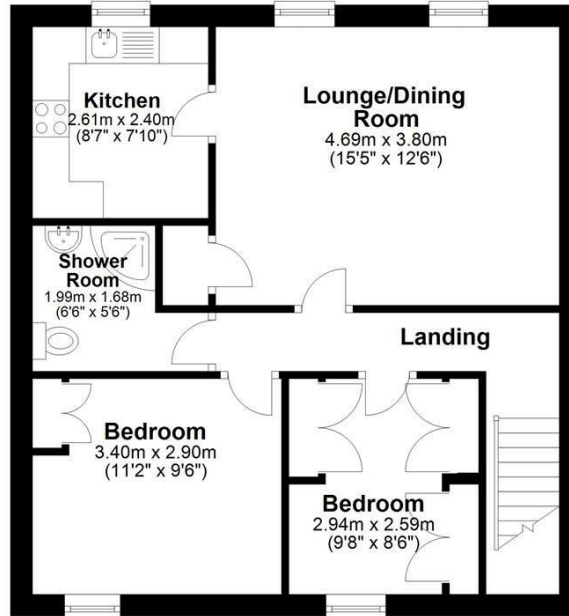
**Woodford & Co.**  
PROPERTY CONSULTANTS & AUCTIONEERS



**Ground Floor**  
Approx. 5.9 sq. metres (63.5 sq. feet)



**First Floor**  
Approx. 55.7 sq. metres (599.8 sq. feet)



Total area: approx. 61.6 sq. metres (663.3 sq. feet)



Energy Efficiency Rating		Current	Potential
Very energy efficient - lower running costs			
(92 plus) <b>A</b>			
(81-91) <b>B</b>			
(69-80) <b>C</b>		71	77
(55-68) <b>D</b>			
(39-54) <b>E</b>			
(21-38) <b>F</b>			
(1-20) <b>G</b>			
Not energy efficient - higher running costs			
<b>England &amp; Wales</b>		EU Directive 2002/91/EC	

Agents Note: Whilst every care has been taken to prepare these particulars, they are for guidance purposes only. All measurements are approximate and are for general guidance purposes only and whilst every care has been taken to ensure their accuracy, they should not be relied upon and potential buyers/tenants are advised to recheck the measurements

Woodford and Company  
12 Market Place  
Oundle  
Peterborough  
PE8 4BQ

01832 274732  
info@woodfordandco.com

**Woodford & Co.**  
PROPERTY CONSULTANTS & AUCTIONEERS