



## 11 Bridgefields, Kegworth, Derby, DE74 2FW

£2,640 PCM

- STUDENT PROPERTY
- 6 double bedrooms
- Open plan kitchen/living/dining area
- Rural views
- Large rear garden with patio
- April Cohort
- Fully furnished
- Easy walk to SB Campus
- 2 bathrooms

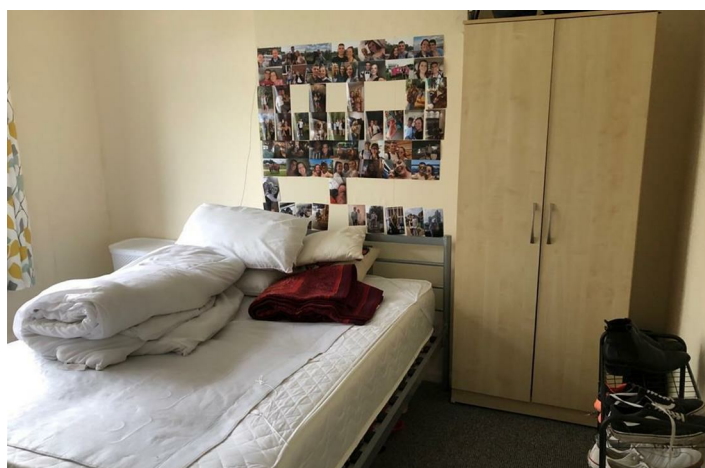


# 11 Bridgefields, Kegworth DE74 2FW

**\*\*April Cohort\*\*** A 6 bedroom fully furnished student property in Kegworth. The property features 6 double bedrooms, an open plan, modern kitchen/living/dining area and 2 bathrooms. Outside you'll find spacious rear and front gardens. This property is in an excellent location with rural views and an easy walk to campus.



Council Tax Band: D



A spacious 6 bedroom student property in the lovely village of Kegworth.

6 double bedrooms each furnished with a double bed and mattress, desk, desk chair and clothes storage. Plus a spare bedroom.

A modern, open plan modern kitchen/living/diner with all white goods including 2 fridge freezers and lots of cupboard space.

2 bathrooms both with white suites.

Spacious rear and front gardens.

Excellent location, an easy walk to campus and rural views of the surrounding countryside and the river.



## Directions

## Viewings

Viewings by arrangement only. Call 01509 674140 to make an appointment.

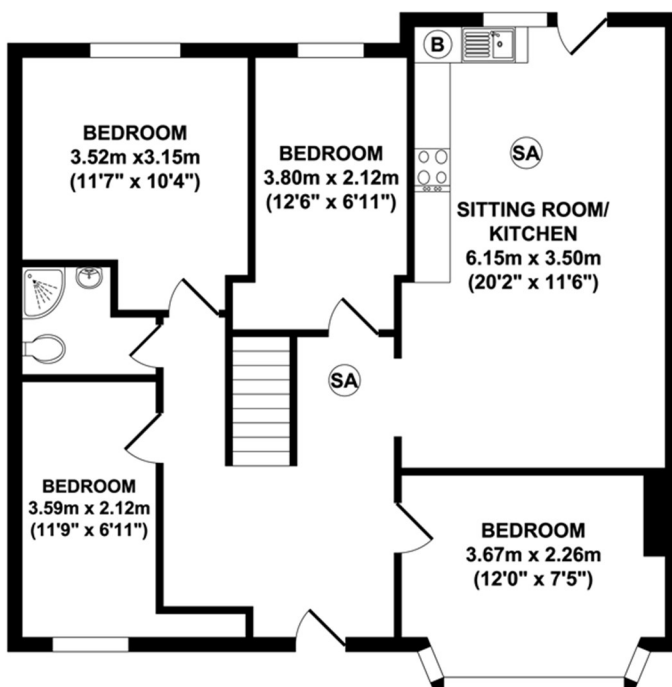
## EPC Rating:

D

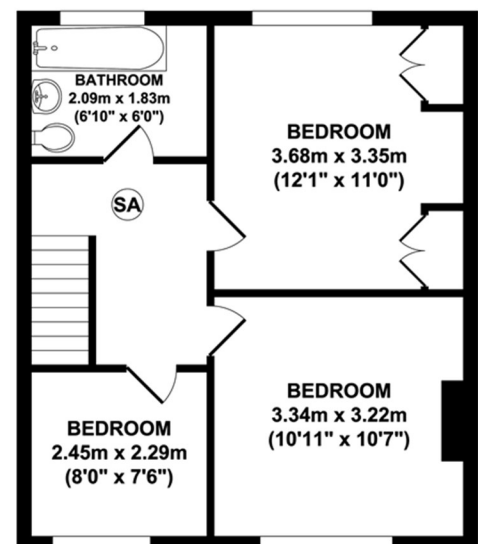
Energy Efficiency Rating		
	Current	Potential
Very energy efficient - lower running costs		
(92 plus) <b>A</b>		
(81-91) <b>B</b>		84
(69-80) <b>C</b>		
(55-68) <b>D</b>	62	
(39-54) <b>E</b>		
(21-38) <b>F</b>		
(1-20) <b>G</b>		
Not energy efficient - higher running costs		
England & Wales		EU Directive 2002/91/EC

(SA) - SMOKE ALARM

(B) - BOILER



GROUND FLOOR



FIRST FLOOR

Whilst every attempt has been made to ensure the accuracy of the floor plan contained here, measurements of doors, windows, rooms and any other items are approximate and no responsibility is taken for any error, omission, or mis-statement. This plan is for illustrative purposes only and should be used as such by any