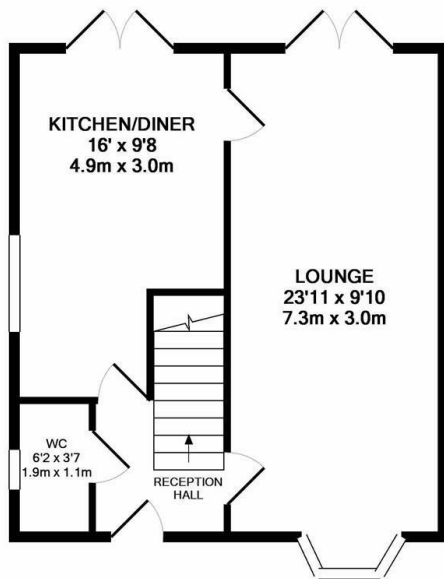




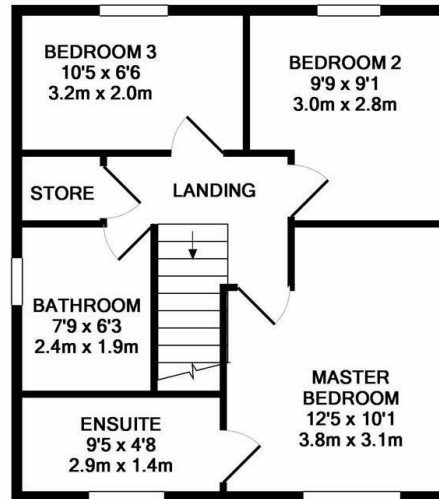
35 Pritchard Drive, Kegworth, Derby, DE74 2AY

£250,000

- Modern family home
- Full length lounge/diner
- Downstairs WC
- Changes to the decor since photographs were taken
- Detached
- Stylish kitchen/diner
- Modern bathrooms
- Master with ensuite
- Off-road parking
- Early viewing recommended



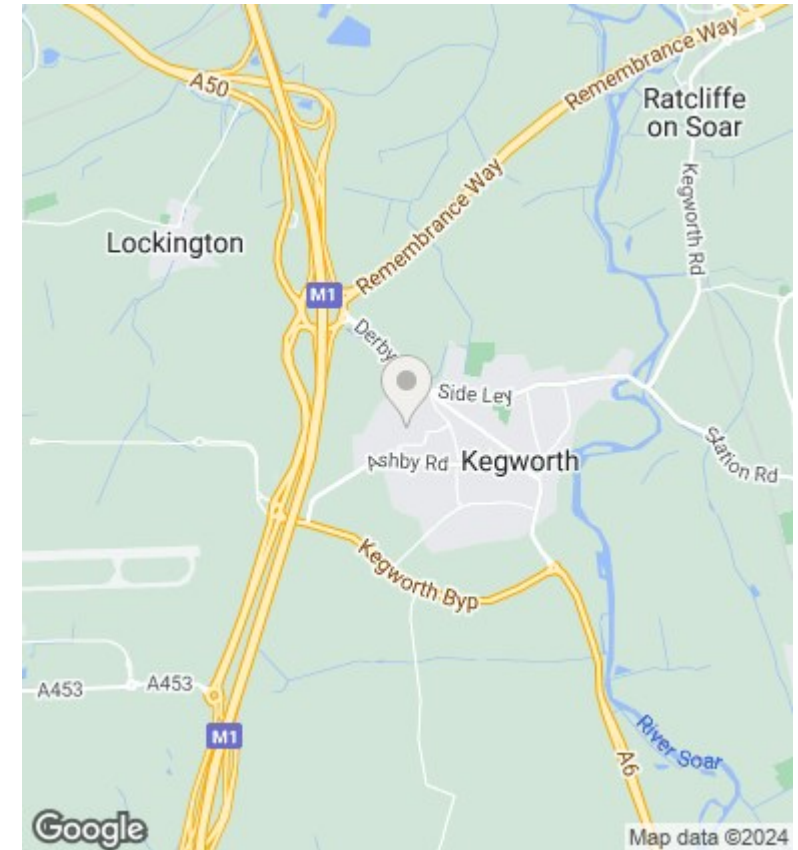
GROUND FLOOR
APPROX. FLOOR
AREA 439 SQ.FT.
(40.8 SQ.M.)



1ST FLOOR
APPROX. FLOOR
AREA 431 SQ.FT.
(40.0 SQ.M.)

TOTAL APPROX. FLOOR AREA 870 SQ.FT. (80.8 SQ.M.)

Whilst every attempt has been made to ensure the accuracy of the floor plan contained here, measurements of doors, windows, rooms and any other items are approximate and no responsibility is taken for any error, omission, or mis-statement. This plan is for illustrative purposes only and should be used as such by any prospective purchaser. The services, systems and appliances shown have not been tested and no guarantee as to their operability or efficiency can be given
Made with Metropix ©2017



Directions

Viewings

Viewings by arrangement only. Call 01509 674140 to make an appointment.

Council Tax Band

C

EPC Rating:

Energy Efficiency Rating		
	Current	Potential
<i>Very energy efficient - lower running costs</i>		
(92 plus) A		
(81-91) B		
(69-80) C		
(55-68) D		
(39-54) E		
(21-38) F		
(1-20) G		
<i>Not energy efficient - higher running costs</i>		
England & Wales	EU Directive 2002/91/EC	