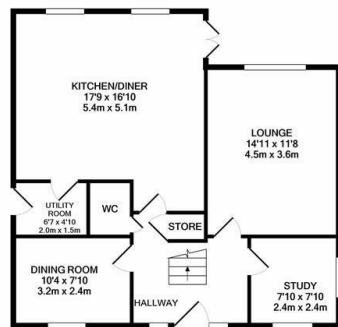




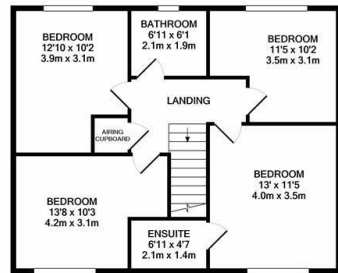
21 Howard Drive, Kegworth, DE74 2AG

£395,000

- Modern detached family home
- 3 reception rooms
- Utility room
- Ready to move into
- 4 double bedrooms, inc. master with ensuite
- Downstairs WC
- Garage with power and light
- Stunning kitchen diner
- Modern family bathroom
- Garden with patio



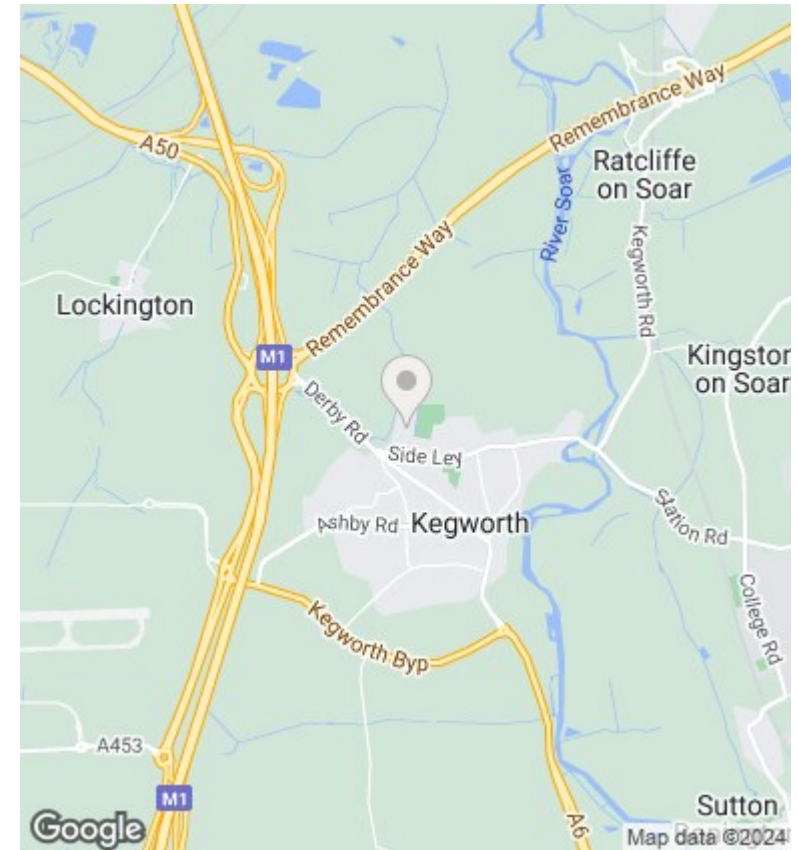
GROUND FLOOR
APPROX. FLOOR
AREA 731 SQ.FT.
(67.9 SQ.M.)



1ST FLOOR
APPROX. FLOOR
AREA 659 SQ.FT.
(61.3 SQ.M.)

TOTAL APPROX. FLOOR AREA 1391 SQ.FT. (129.2 SQ.M.)

Whilst every attempt has been made to ensure the accuracy of the floor plan contained here, measurements of doors, windows, rooms and any other details are approximate and no responsibility is taken for any error, omission, or mis-statement. This plan is for illustrative purposes only and should be used as such by any prospective purchaser. The services, systems and appliances shown have not been tested and no guarantee as to their operability or efficiency can be given.
Made with Metropix iCDEE1



Directions

Viewings

Viewings by arrangement only. Call 01509 674140 to make an appointment.

Council Tax Band

E

EPC Rating:

Energy Efficiency Rating		
	Current	Potential
<i>Very energy efficient - lower running costs</i>		
(92 plus) A		
(81-91) B		
(69-80) C		
(55-68) D		
(39-54) E		
(21-38) F		
(1-20) G		
<i>Not energy efficient - higher running costs</i>		
England & Wales	EU Directive 2002/91/EC	