



4 Moorfield Cottages, Ocle Pychard, Hereford HR1 3QL



**4 Moorfield Cottages
Ocle Pychard
Hereford
HR1 3QL**

Summary of features

- Modernised family home
- Three bedrooms
- Within easy reach of Hereford
- Great outdoor space
- Generous plot size of roughly 1.5acres
- Sought after location
- Ancillary accommodation with home office/gym/kitchen and shower room

Asking price £400,000

Description

Welcome to this charming semi-detached house located in the sought-after area of Ocle Pychard, Hereford. This modernised family home boasts two reception rooms, three bedrooms, and a bathroom, providing ample space for comfortable living. The property features ancillary accommodation, offering versatility and potential for various uses to suit your needs. With a great outdoor space, you can enjoy the fresh air and create wonderful memories in your own garden. Located within easy reach of Hereford, this property combines the tranquility of rural life with the convenience of nearby amenities. Whether you're looking for a cozy family home or a peaceful retreat, this house offers a perfect blend of comfort and charm.

Situation

Ocle Pychard is a hamlet in Herefordshire surrounded by beautiful open countryside and home to the Church of St James the Great. Nearby amenities include the grocery shop and service station at Newtown and the Wye Valley Brewery public house in Stoke Lacy. The city of Hereford is a convenient drive away.

Accommodation

The well-presented accommodation comprises: Entrance Hall, kitchen, living room, dining room, utility, cloakroom, three bedrooms and a family bathroom.

Entrance Hall

Set below ground level, stairs rise giving access to the kitchen or the utility area. Window to the rear aspect and storage space for shoes and coats.

Kitchen

A stylish, modern kitchen has been installed with an array of gloss-finished cupboards, double eye-level oven and feature window looking out towards the rear garden. The kitchen is also fitted with integrated appliances such as, dishwasher

and fridge/freezer. There is also space for a small breakfast bar.

Living Room

The living room to the front of the property has a central wood stove beneath a wooden mantle, French doors lead out to the front patio and lawn garden.

Dining Room

Adjacent to the living room and a short distance away from the kitchen, providing dining space for the family or guest. Window to the front and side aspect.

Utility/Cloakroom

With sink drainer unit, window to the side aspect, additional storage cupboards and space for whites goods. Separate cloaked room with low level WC.





First Floor

Bedroom One

With far reaching views across the countryside from the rear aspect window. A double bedroom with fitted wardrobes.

Bedroom Two

Another double bedroom positioned at the front of the property with a window overlooking the front garden.

Bedroom Three

Countryside views from the rear aspect window and fitted wardrobes.

Family Bathroom

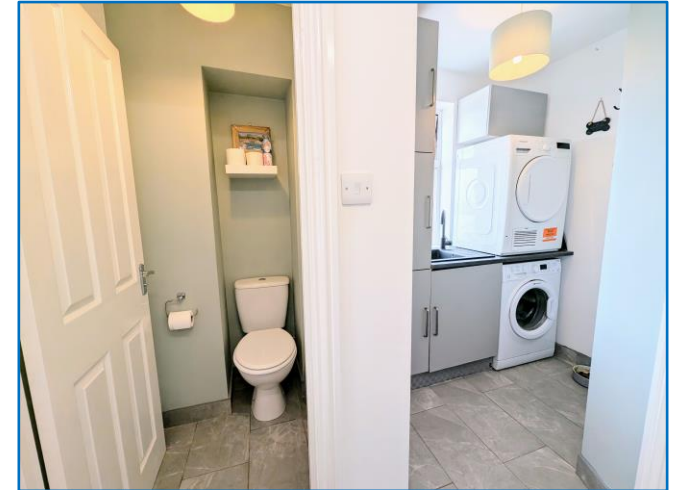
Fitted with a modern three piece suite which includes, bath with shower over, low level WC and wash hand basin.

Outside:

The front of the property is set back with a pretty cottage garden, mainly laid to lawn, a patio and some attractive, mature trees; a pathway continues to the side, and leads to the main property entrance. Rear parking is situated opposite the property, in front of wooden garaging/storage building which has a cellar with further potential or the ancillary accommodation. A side gate leads you to an impressively large, additional garden with mature hedging and planted trees. This outdoor space has the bonus of backing on to the open countryside beyond.

Ancillary Accommodation:

An impressive and stand out feature of the property. Positioned opposite the main house and is fitted with its very own wet room, kitchen area and has the luxury of having a gym, plus home office with access to the rear garden. To the front is another useful storeroom. Supplied with water and electricity.





Tenure:

Freehold.

Services:

Mains water and electricity are connected to the property.

Private drainage.

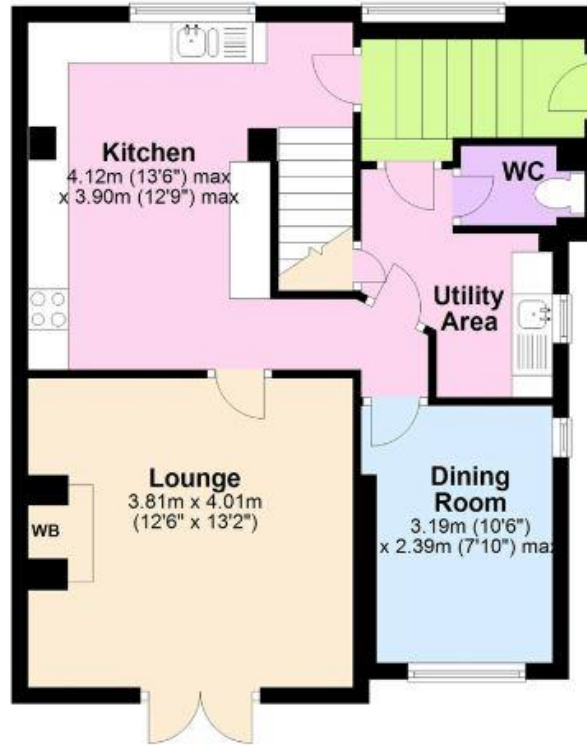
Oil fired central heating.

Herefordshire council tax band - C

Directions:

From Burley Gate roundabout, travel south-west towards Hereford, after 300m pass a left hand turn sign-posted for Ocle Pychard, after another 100m you will pass a small group of houses on your left, immediately after these, take a left hand turn onto a track which leads to the property rear and parking for 4 Moorfields Cottages.

Ground Floor



First Floor



Total area: approx. 93.7 sq. metres (1008.6 sq. feet)

These plans are for identification and reference only.
Plan produced using PlanUp.

Sunderlands

Hereford Branch

Offa House, St Peters Square,
Hereford HR1 2PQ

Tel: 01432 356 161

Email: hereford@sunderlands.co.uk

Hay-on-Wye Branch

3 Pavement House, The Pavement,
Hay on Wye, Herefordshire HR3 5BU

Tel: 01497 822 522

Email: hay@sunderlands.co.uk

www.sunderlands.co.uk



Score	Energy rating	Current	Potential
92+	A		
81-91	B		84 B
69-80	C		
55-68	D		
39-54	E	53 E	
21-38	F		
1-20	G		