



The Firs & The Old Stables, Marden, Hereford HR1 3EN



**Sunderlands**  
Residential Rural Commercial



**The Firs & Old Stables**  
**Marden**  
**Hereford**  
**HR1 3EN**

Summary of features

- A fine detached country home.
- Six year old, two bedroom detached annex.
- Paddock and formal gardens – in total about **three acres**.
- Much character with period features.
- Plenty of parking, double and single garage.
- No onward chain.

**Price Guide: £795,000**

**Description**

Standing on the edge of this well served village bordering open farmland, this fine detached residence forms accommodation ideal for a family. The Firs is a detached period house which has been extended and remodelled over the years but still retains many of its original features and character. The accommodation is arranged over two floors with modern gas central heating and briefly comprises three Reception rooms, Kitchen/Breakfast room, Garden room, and to the First Floor, four bedrooms and a further Bathroom. Adjacent to the main house is ancillary accommodation, a superb detached two bedroom Annex offering accommodation for a live-in relative or supplementary income. Both properties are set in formal well stocked gardens with an adjoining two acre paddock, plenty of parking as well as a double garage. An internal inspection is highly recommended. No ongoing chain.

**Situation**

Set on the fringes of this popular well served village just four miles north of Hereford centre. Marden has a shop, café, primary school, church and some lovely walks around surrounding countryside.

**Accommodation**

*Accommodation in more detail as follows:*

**A wide full length Canopy Porch**

With ornate glazed front door leading to –

**Reception Hall**

With radiator, stairs to First Floor, deep understairs cupboard.

**Sitting Room**

With exposed floorboards, fireplace with raised grate, marble surround with mirror over, radiator and sash window to front.

**Dining Room**

Having exposed floorboards, sash window, fireplace with fitted wood burning stove, recess cupboards to either side with pine doors.

**Inner Hallway**

**Pantry**

With shelving, cold slab, window, old meat hooks.

**Snug**

With fireplace (not in use), window to front, radiator.

**Kitchen/Breakfast Room**

Having range of pine fronted units to both base and eye level, work surface area with stainless steel double draining sink, plumbing space for washing machine, cooker space, double glazed window and radiator.

**Inner Hallway**

With radiator.

**Bathroom**

Comprising bath, WC low flush suite, wash hand basin, double glazed window, radiator, airing cupboard housing hot water cylinder.

**Garden Room**

Double glazed window, doors to outside and door to garage.

*From the Reception Hall stairs lead to the First Floor.*









## First Floor

### Landing

Being split level with wood spindle banister, with small seating area with window overlooking the paddock and beyond.

### Bedroom One

Having radiator, sash window, fireplace with raised grate and exposed floorboards.

### Bedroom Two

Having radiator, sash window and exposed floorboards.

### Bedroom Three

Having radiator, sash window and exposed floorboards.

### Bathroom Two

Comprising bath, WC low flush suite, wash hand basin, two double glazed Velux windows, radiator and linen cupboard.

### Bedroom Four/Study

With sash window and radiator.

## Outside:

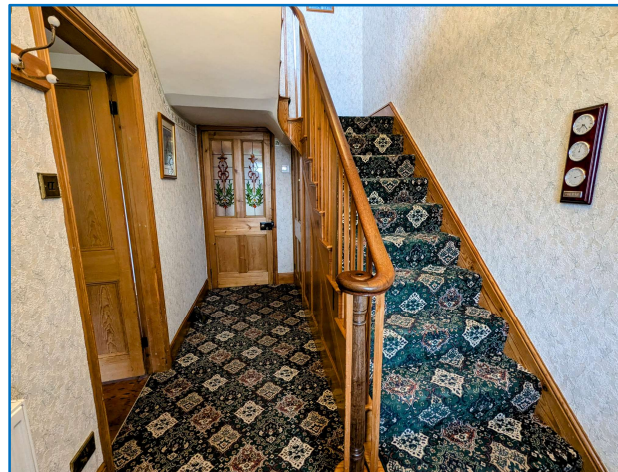
A 5 bar gate with brick pillars and gravel drive leads to a parking area and to the garage.

### Garage

Having up and over door, window, wall mounted gas central heating boiler, power and light.

The drive extends to a further double garage block.

There is a second front gate and further drive offering additional parking area. The remainder of the front is laid to formal lawns with brick front walling topped with iron railings with areas of lawn, flower beds and shrubs with central feature of further flowerbeds, Yew tree and climbing pear. Access can be gained to either side of the property to a further garden area which is laid to lawn with a paved seating area with dwarf brick walling and again, with a variety of shrub beds and mature trees including Willow.





### Ancillary Accommodation:

Adjacent to the main house is **Old Stables** which was constructed approximately six years ago as ancillary accommodation, ideal as an Annex or potential income and briefly comprises.

#### **Double glazed door to –**

##### **Porch**

With double glazed windows and door to –

##### **Reception Hall**

With electric heater, airing cupboard housing hot water cylinder.

##### **Kitchen/Living Room**

A superb open plan L shaped room with seating, living/dining area with double glazed windows and double glazed double doors overlooking the gardens and the paddock, electric radiators.

##### **Kitchen Area**

Having a range of base and eye level units with work surface area, stainless steel sink and sink drainer unit, plumbing space for washing machine, cooker space and fridge space.

##### **Bedroom One**

Having an electric radiator, double glazed window.

##### **Bedroom Two**

Having fitted wardrobes with electric radiator and double glazed window.

##### **Shower Room**

With shower, WC low flush suite, wash hand basin, double glazed window and radiator.

**Detached double garage 6.32 x 6.30** with twin double doors, power and light, pitched roof and window.

The remainder of the garden area is again laid to lawn enclosed with hedging with mature Walnut tree.

The paddock which adjoins the gardens extends to about 2 acre and has a separate road vehicle gate, is level and fenced and adjoins farmland. Ideal for buyers with horses or hobby farming.









### Services:

Mains, water, electricity and gas. Private drainage.

Council Tax Band – E (*The Firs*)  
A (*The Old Stables*)

### Agents Note:

The paddock has a 50% overage restriction for building. Further details can be obtained from the selling Agents.

### Tenure:

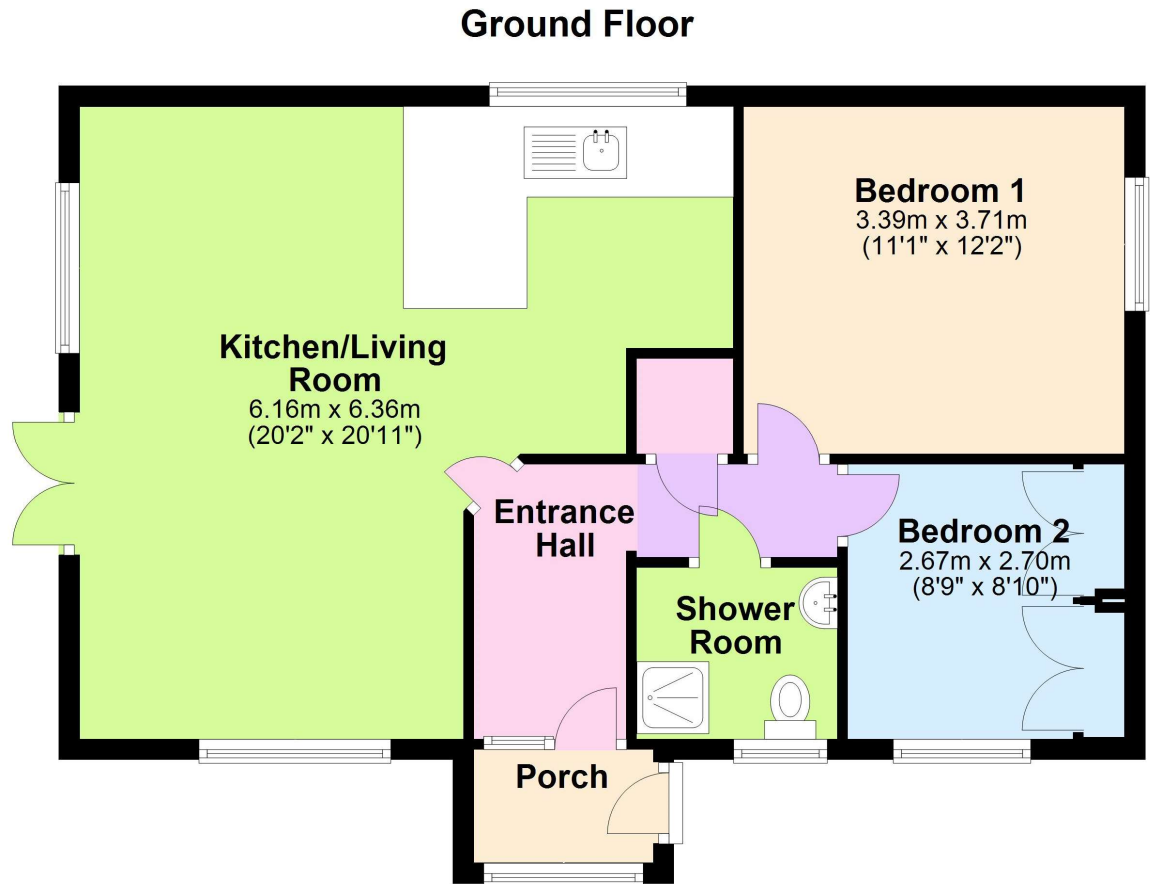
Freehold.

### Directions:

Proceed out of Hereford over the top of Aylestone Hill until reaching the roundabout with the A4103. Continue straight over following the signs to Sutton St Nicholas. In the village, take the first left and follow the signs to 'Marden'. On approaching Marden pass the church entrance on the left hand side and after about 500 metres the property should be seen on the right hand side.

### What3words:

///youth.ruins.choice

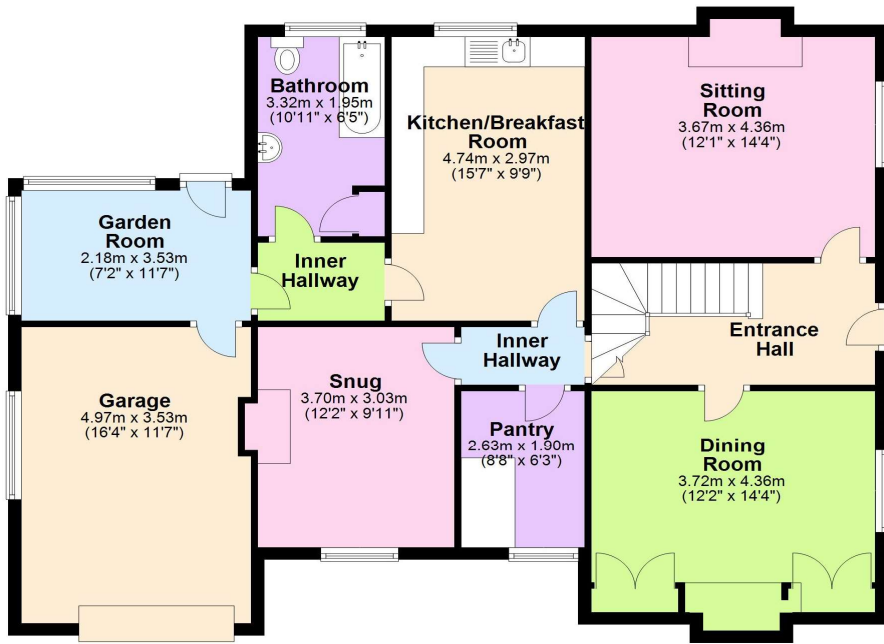


Score	Energy rating	Current	Potential
92+	A		96 A
81-91	B	82 B	
69-80	C		
55-68	D		
39-54	E		
21-38	F		
1-20	G		

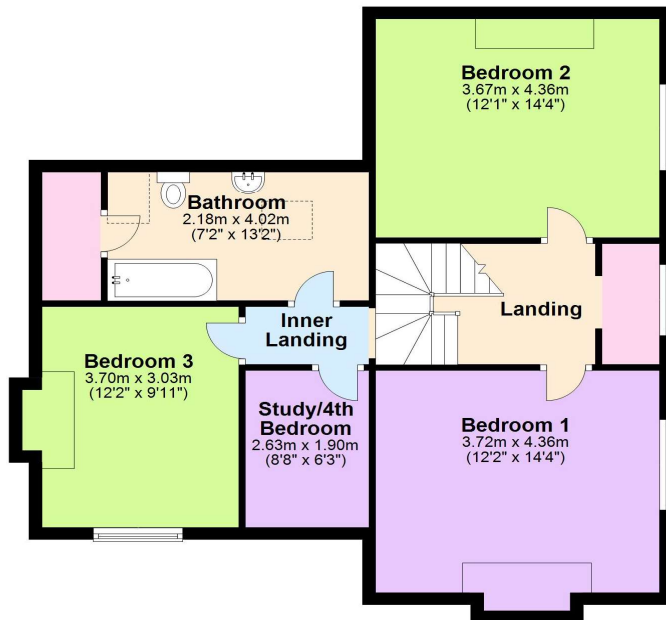
Floor plan produced for identification only. Not to Scale  
Plan produced using PlanUp.



**Ground Floor**



**First Floor**



Floor plan produced for identification only. Not to Scale  
Plan produced using PlanUp.

Score	Energy rating	Current	Potential
92+	A		
81-91	B		
69-80	C		
55-68	D		68 D
39-54	E		
21-38	F		
1-20	G	4 G	

rightmove  
find your happy

Zoopa.co.uk  
Smarter property search



**Sunderlands**

**Hereford Branch**

Offa House, St Peters Square,  
Hereford HR1 2PQ

Tel: 01432 356 161

Email: hereford@sunderlands.co.uk

**Hay-on-Wye Branch**

3 Pavement House, The Pavement,  
Hay on Wye, Herefordshire HR3 5BU

Tel: 01497 822 522

Email: hay@sunderlands.co.uk

[www.sunderlands.co.uk](http://www.sunderlands.co.uk)

None of these statements contained in these particulars are to be relied upon as statements or representations of fact. These particulars are not an offer or contract or part of one. Floor plans are provided for guidance as to the layout of the property only. Room sizes and measurements are approximate only. Please note we have not tested the equipment, appliances and services in the property and interested parties are advised to commission appropriate investigation before formulating their offer for purchase. Sunderlands are a member of the 'Ombudsman for Estate Agents Scheme' OEA and therefore adhere to their Code of Practice. A copy of the Code of Practice is available on request.