

KING WILLIAM COURT EN9

Castles present this chain free two double bedroom ground floor apartment located on the sought after Meridian Park development. Benefiting from a large reception room that leads onto the kitchen, the main bedroom comes with an en-suite in addition to a luxury shower room and storage in the hallway.

£299,950 Leasehold

Castles

01992 711119

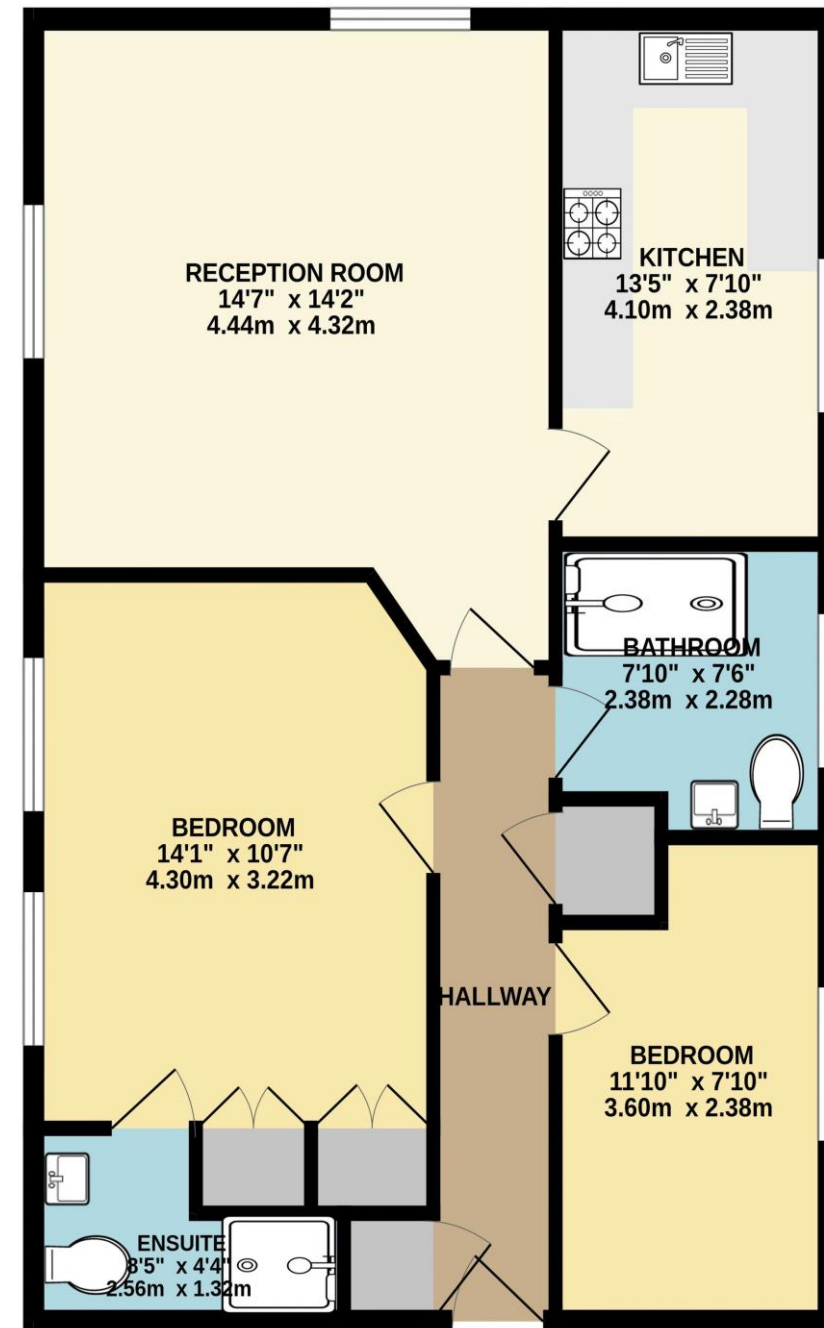
hello@castles.london

castles.london

2/4 Highbridge Street
Waltham Abbey
EN9 1DT



GROUND FLOOR
764 sq.ft. (71.0 sq.m.) approx.



TOTAL FLOOR AREA: 764 sq.ft. (71.0 sq.m.) approx.

Whilst every attempt has been made to ensure the accuracy of the floorplan contained here, measurements of doors, windows, rooms and any other items are approximate and no responsibility is taken for any error, omission or mis-statement. This plan is for illustrative purposes only and should be used as such by any prospective purchaser. The services, systems and appliances shown have not been tested and no guarantee as to their operability or efficiency can be given.
Made with Metropix ©2023

KEY FEATURES:

- *CHAIN FREE
- *TWO BEDROOMS
- *EN-SUITE TO MASTER BEDROOM
- *STORAGE SPACE
- *MERIDIAN PARK DEVELOPMENT

Entrance:

Communal entrance with entryphone system; stairs to first floor

Reception: 14' 7" x 14' 2" (4.44m x 4.31m):

Entrance to kitchen

Kitchen: 13' 5" x 7' 10" (4.09m x 2.39m)

Bedroom 1: 14' 1" x 10' 7" (4.29m x 3.22m):

Door to en-suite

En-suite shower room: 8' 5" x 4' 4" (2.56m x 1.32m)

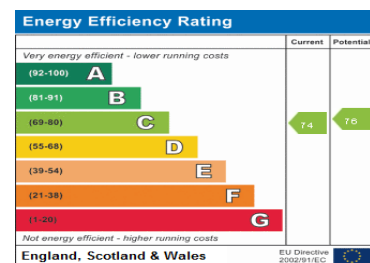
Bedroom 2: 11' 10" x 7' 10" (3.60m x 2.39m)

Communal Gardens

Vendor advises:

- LEASE = 121 years
- Ground rent = £100 pa
- Service charge = £1,622.76 pa

TAX BAND: D



rightmove
find your happy

Zoopla
Smarter property search

PrimeLocation
Find the home you deserve



OnTheMarket.com

The Property Ombudsman

A free, fair and independent service for buyers, sellers, tenants and landlords of property in the UK.

All details including floorplans are for representation purposes only and do not constitute a contract or warranty. Whilst every effort is made to ensure accuracy of descriptions and measurements, no responsibility is taken for errors, omissions and misstatements.