

BEECHFIELD WALK EN9

Castles market this well presented and fantastic sized three double bedroom semi detached house with a large driveway. Comprising two reception rooms, large kitchen diner with bifold doors to the lengthy rear garden, utility/ WC and an upstairs bath/ shower room. Located close to schooling and commuter links.

£480,000 Freehold

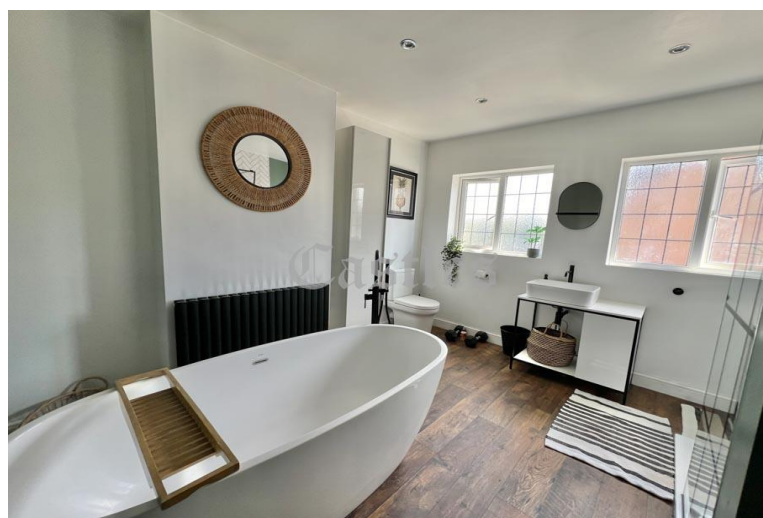
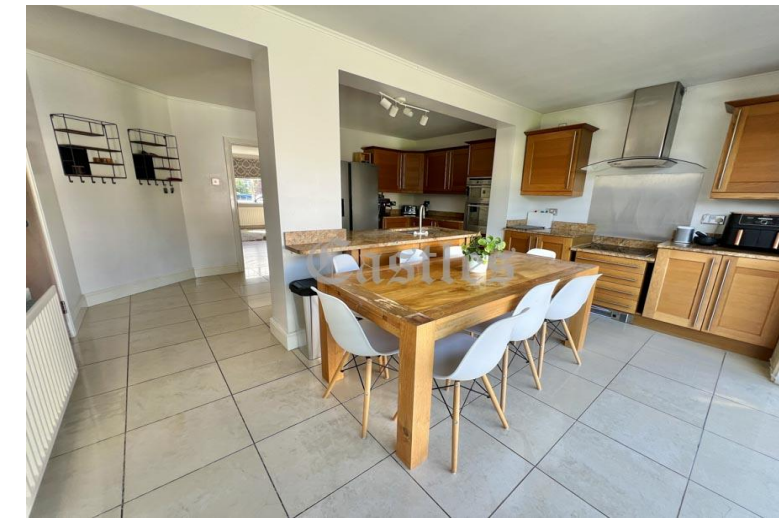
Castles

01992 711119

hello@castles.london

castles.london

2/4 Highbridge Street
Waltham Abbey
EN9 1DT



Entrance :

Driveway, side access, front door to hall

Hall :

Stairs to first floor, access to reception 1

Reception 1: 18' 0" x 11' 1" (5.48m x 3.38m):

Access to kitchen, opens to reception 2

Reception 2: 11' 8" x 9' 5" (3.55m x 2.87m)

Kitchen/Diner: 15' 6" x 17' 4" (4.72m x 5.28m):

Bi-folding doors to garden, door to utility room/wc

Utility Room/WC: 14' 4" x 3' 9" (4.37m x 1.14m)

First Floor Landing :

Access to bedrooms and bathroom, loft hatch

Bedroom 1: 12' 5" x 12' 4" (3.78m x 3.76m)

Bedroom 2: 11' 6" x 8' 9" (3.50m x 2.66m)

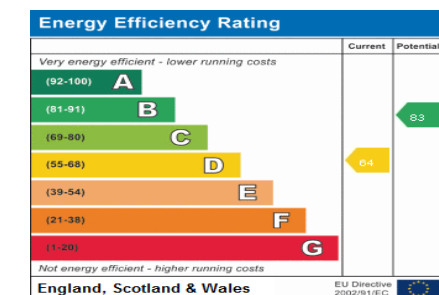
Bedroom 3: 12' 6" x 6' 9" (3.81m x 2.06m)

Bathroom: 11' 6" x 10' 7" (3.50m x 3.22m):

Bath + shower

Rear Garden

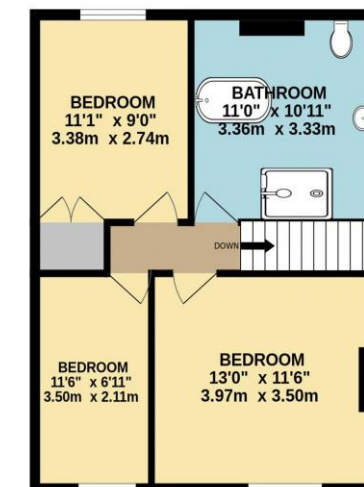
Side access, brick outbuilding



GROUND FLOOR
699 sq.ft. (65.0 sq.m.) approx.



1ST FLOOR
489 sq.ft. (45.5 sq.m.) approx.



TOTAL FLOOR AREA : 1189 sq.ft. (110.4 sq.m.) approx.

Whilst every attempt has been made to ensure the accuracy of the floorplan contained here, measurements of doors, windows, rooms and any other items are approximate and no responsibility is taken for any error, omission or mis-statement. This plan is for illustrative purposes only and should be used as such by any prospective purchaser. The services, systems and appliances shown have not been tested and no guarantee as to their operability or efficiency can be given.
Made with Metropix ©2024



A free, fair and independent service for buyers, sellers, tenants and landlords of property in the UK.

All details including floorplans are for representation purposes only and do not constitute a contract or warranty. Whilst every effort is made to ensure accuracy of descriptions and measurements, no responsibility is taken for errors, omissions and misstatements.