

## GREENWICH WAY EN9

Castles market this stunning and well presented four double bedroom family home. Providing ample living space it benefits from a detached double garage of which is currently converted for multiple uses as well as loft space within it, a summer house and a driveway. Internally it benefits from three bath/shower rooms, two being ensuites and one being a family bathroom, as well as ground floor cloakroom, utility room and a large kitchen diner. Located on this premier development close to the Gunpowder Park and commuter links.

**£650,000 Freehold**



# Castles

01992 711119

hello@castles.london

castles.london

2/4 Highbridge Street  
Waltham Abbey  
EN9 1DT



**Entrance :**

Detached double garage, driveway, side access, front door to hall

**Hallway :**

Stairs to first floor, access to reception, kitchen, cloakroom/wc

**Reception:** 19' 9" x 11' 8" (6.02m x 3.55m):

Access to garden

**Kitchen/Diner:** 23' 8" x 12' 0" (7.21m x 3.65m):

narrowing to 10' 1" (3.07m); Access to utility room

**Cloakroom/wc:** 5' 3" x 3' 8" (1.60m x 1.12m):

**Utility Room:** 9' 3" x 6' 8" (2.82m x 2.03m):

Access to garden, access to garage, side access

**First Floor Landing :**

Access to bedrooms 2, 3, 4 and bathroom, stairs to 2nd floor

**Bedroom 2:** 12' 2" x 11' 8" (3.71m x 3.55m):

Fitted wardrobes: access to en suite shower (6'7 x 5'6)

**Bedroom 3:** 10' 3" x 10' 1" (3.12m x 3.07m)

Fitted wardrobes

**Bedroom 4:** 10' 2" x 9' 4" (3.10m x 2.84m)

narrowing to 8' 5 (2.56m): Fitted wardrobes

**Bathroom:** 11' 7" x 5' 6" (3.53m x 1.68m)

**Second Floor/Bedroom 1:** 30' 0" x 14' 5" (9.14m x 4.39m)

(to longest points); Incorporating dressing area and en suite shower area

**Rear Garden:**

access to summer house, access to garage, side access

**Summer House:** 16' 0" x 12' 2" (4.87m x 3.71m)

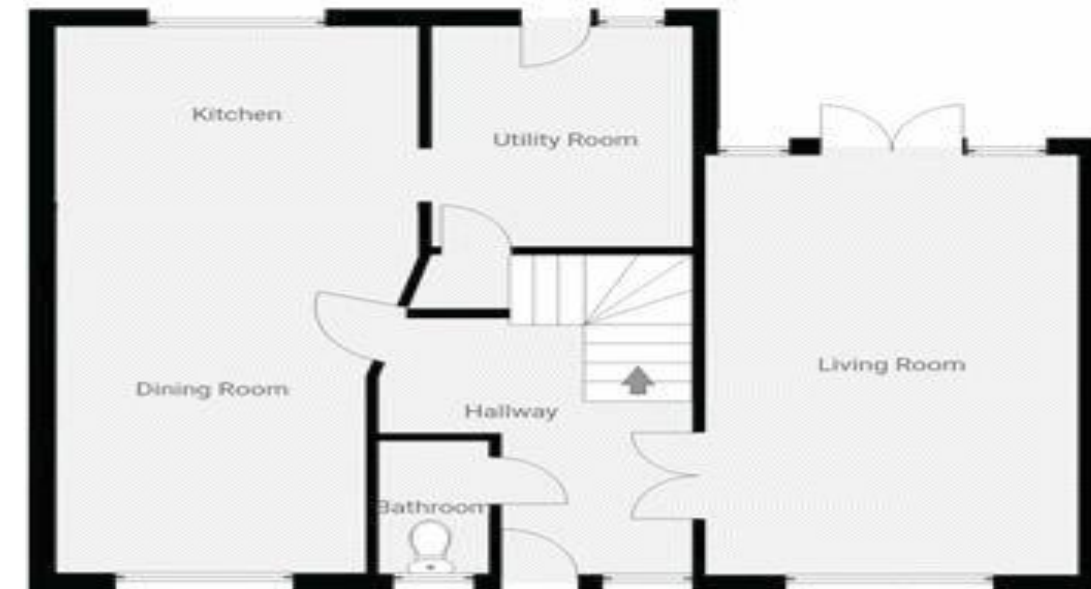
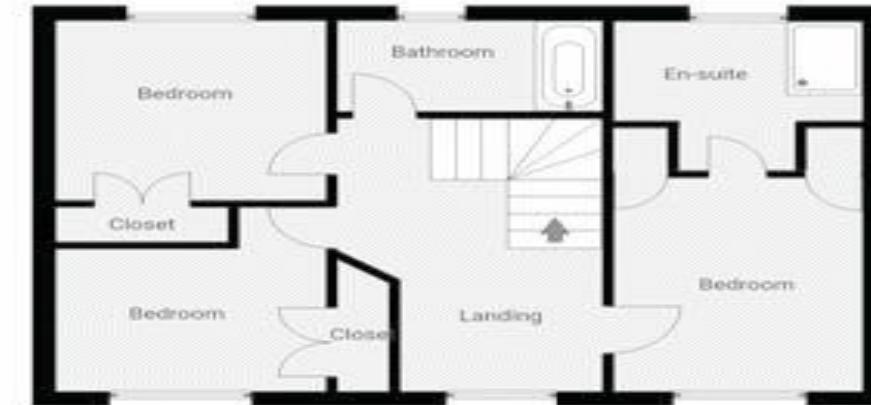
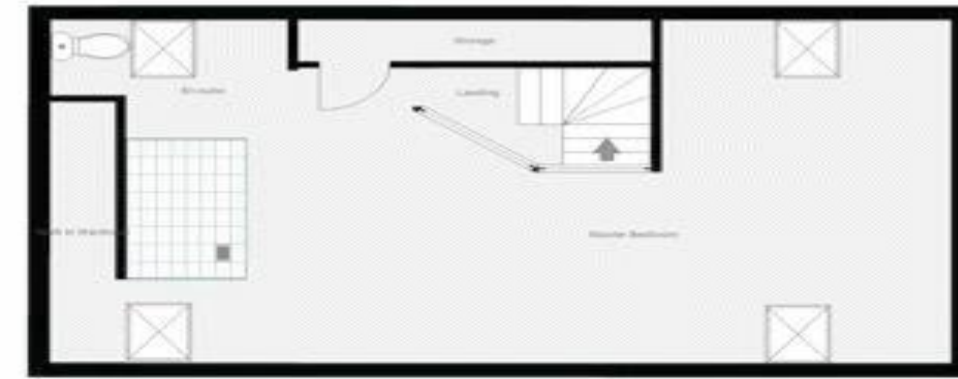
Air conditioning

**Converted Garage:** 18'5 x 19'7 (5.61m x 5.96m): Loft space with ladder, electric

heating, storage area

**EPC: C**

**Tax Band: F**



**rightmove**  
find your happy

**Zoopla**  
Smarter property search

**PrimeLocation**  
Find the home you deserve



**OnTheMarket.com**

**The Property Ombudsman**

A free, fair and independent service for buyers, sellers, tenants and landlords of property in the UK.

All details including floorplans are for representation purposes only and do not constitute a contract or warranty. Whilst every effort is made to ensure accuracy of descriptions and measurements, no responsibility is taken for errors, omissions and misstatements.