

## UPSHIRE ROAD EN9

Castles market this chain free extended four bedroom semi detached house with a driveway and a garage. Comprising a large through lounge, dining area and a breakfast room. Benefits from a ground floor cloakroom, a family bathroom and an en-suite shower to the master bedroom. Located close to schools and local shops.

**£485,000 Freehold**

# Castles

01992 711119

hello@castles.london

castles.london

2/4 Highbridge Street  
Waltham Abbey  
EN9 1DT



**KEY FEATURES:**

- \*Four bedrooms \*Chain Free \*Semi detached \*Driveway + garage
- \*Cloakroom \*En-suite to master bedroom

**Entrance :**

Driveway, garage to side, front door to hall

**Hallway :**

Stairs to first floor, access to reception and kitchen

**Reception: 22' 0" x 9' 9" (6.70m x 2.97m)**

**Dining Room: 15' 1" x 13' 2" (4.59m x 4.01m)**

**Kitchen/Diner: 19' 6" x 8' 5" (5.94m x 2.56m):**

Door to rear garden

**Cloakroom/wc**

**First Floor Landing :**

Stairs to 2nd floor; access to bedrooms 2, 3, 4 and bathroom

**Bedroom 2: 11' 2" x 10' 8" (3.40m x 3.25m):**

Fitted wardrobes

**Bedroom 3: 10' 8" x 8' 7" (3.25m x 2.61m):**

Fitted wardrobes

**Bedroom 4: 7' 6" x 6' 1" (2.28m x 1.85m)**

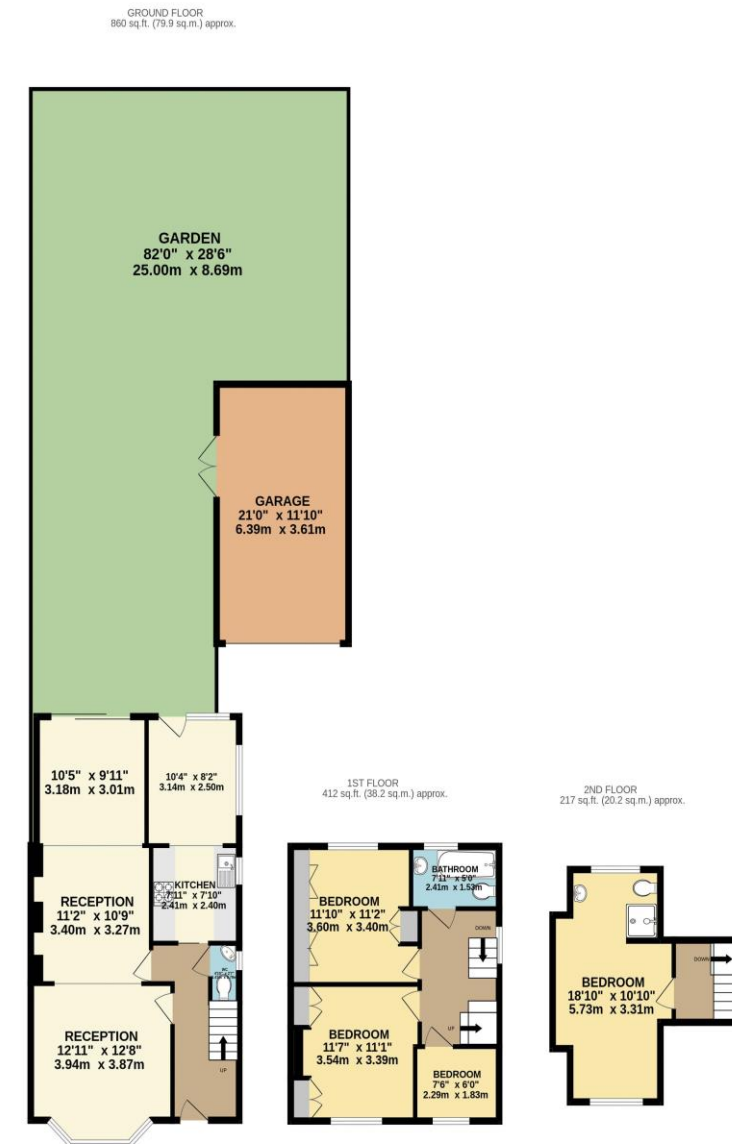
**Bathroom: 7' 7" x 5' 7" (2.31m x 1.70m)**

**Second Floor Landing**

**Bedroom 1: 18' 0" x 8' 5" (5.48m x 2.56m):**

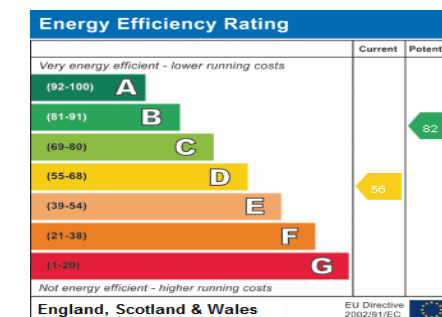
Opens to en-suite shower

**Rear Garden:** Access to garage



TOTAL FLOOR AREA: 1489 sq.ft. (138.4 sq.m.) approx.

Whilst every attempt has been made to ensure the accuracy of the floorplan contained here, measurements of doors, windows, rooms and any other items are approximate and no responsibility is taken for any error, omission or mis-statement. This plan is for illustrative purposes only and should be used as such by any prospective purchaser. The services, systems and appliances shown have not been tested and no guarantee as to their operability or efficiency can be given.  
Made with Metroplan 62024



A free, fair and independent service for buyers, sellers, tenants and landlords of property in the UK.

All details including floorplans are for representation purposes only and do not constitute a contract or warranty. Whilst every effort is made to ensure accuracy of descriptions and measurements, no responsibility is taken for errors, omissions and misstatements.