

SNELLERS

ESTATE AGENTS



Bonner Hill Road, KT1

£1,950 PCM

A charming two double bedroom Victorian cottage on a residential road in Kingston. The house offers almost 750 sq.ft of well proportioned living space set over two floors and has a delightful rear garden.

Bonner Hill Road is a popular residential road close to the river Thames and less than a mile from Kingston town centre with it's fantastic shopping and restaurant facilities and the station.

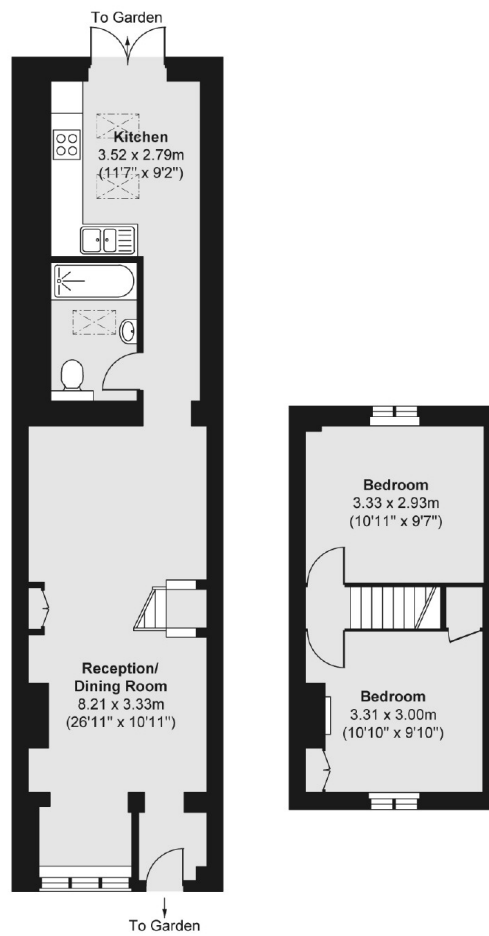
- Two Double Bedrooms • Victorian Cottage • Modern Kitchen •
- Character Features • Large Rear Garden • Close To Town Centre •

SNELLERS

ESTATE AGENTS

Ground Floor

First Floor



Total area (approx.) 68.33 sq. m (735 sq. ft)

Snellers Kingston Lettings
17-21 Richmond Road
Kingston
KT2 5BW
020 8546 0505
kingstonlettings@snellers.co.uk

Energy Rating: C We aim to make our particulars both accurate and reliable. However they are not guaranteed; nor do they form part of an offer or contract. If you require clarification on any points then please contact us, especially if you're traveling some distance to view. Please note that appliances and heating systems have not been tested and therefore no warranties can be given as to their good working order