

SNELLERS

ESTATE AGENTS



Grove Crescent, KT1

£2,900 PCM

Large three/four bedroom house situated only moments away from all the amenities Kingston has to offer, the property comprises spacious living area with modern kitchen leading onto garden, two bathrooms, parking for two cars and ample storage throughout.



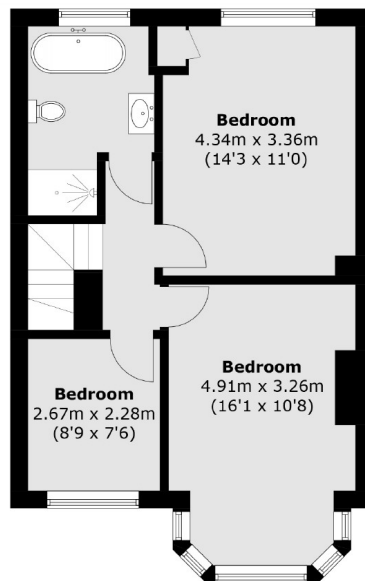
Set on a quiet residential road close to Kingston town centre and a short walk to the train station.

- Modern house • Four bedrooms • Unfurnished •
- Stunning Kitchen • Off-Street Parking • Prime Location •

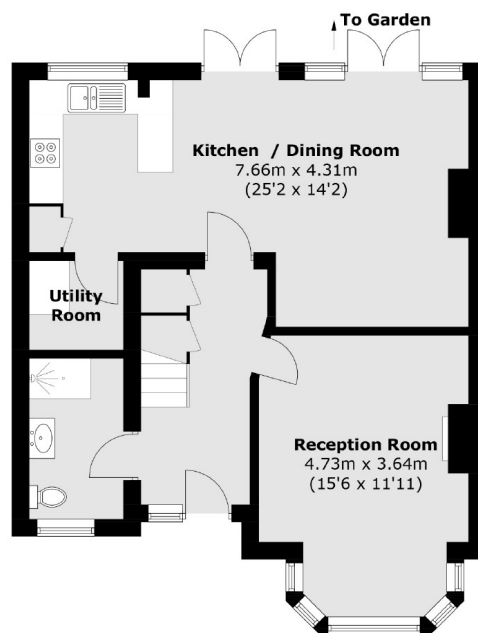


SNELLERS

ESTATE AGENTS



First Floor



Ground Floor

Total area (approx.): 112.3 sq. m (1,208.8 sq. ft)

Snellers Kingston Lettings
17-21 Richmond Road
Kingston
KT2 5BW
020 8546 0505
kingstonlettings@snellers.co.uk

Energy Rating: D We aim to make our particulars both accurate and reliable. However they are not guaranteed; nor do they form part of an offer or contract. If you require clarification on any points then please contact us, especially if you're traveling some distance to view. Please note that appliances and heating systems have not been tested and therefore no warranties can be given as to their good working order