

# SNELLERS

ESTATE AGENTS

---



## Boyd Close, KT2

£2,995 PCM

This townhouse has a large eat-in kitchen, private garden, five double bedrooms, two bathrooms and off street parking.





Boyd Close is a short walk from Kingston Town Centre and located 0.4 miles to Norbiton station, and 0.9 miles to Kingston station.

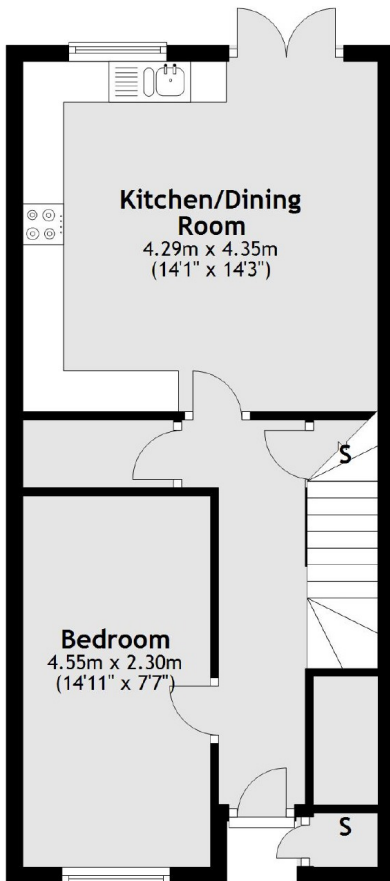
- Town House • Five Double Bedrooms • Large Eat-in Kitchen •
- Modern Bathrooms • Private Garden • Central Location •



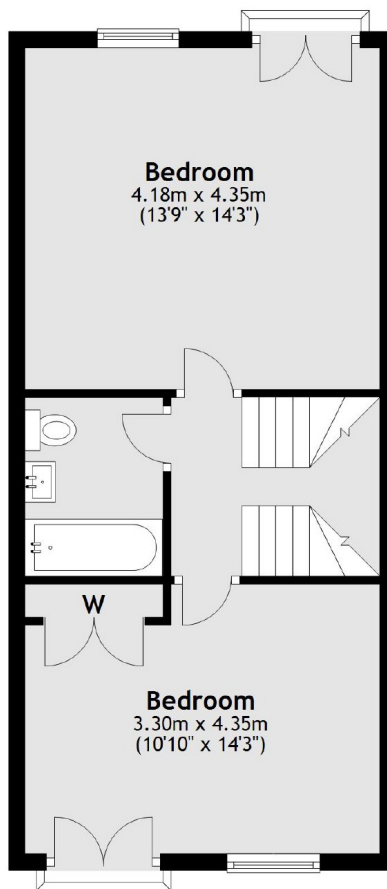
# SNELLERS

ESTATE AGENTS

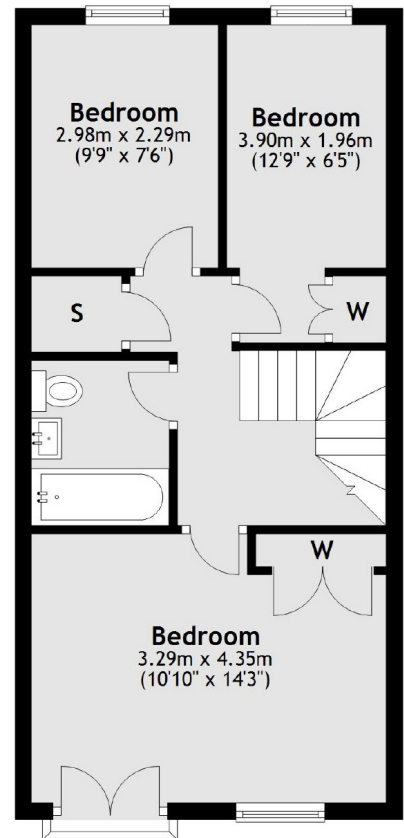
Ground Floor



First Floor



Second Floor



Total area: approx. 126.5 sq. metres (1361.4 sq. feet)

Snellers Kingston Lettings  
17-21 Richmond Road  
Kingston  
KT2 5BW  
020 8546 0505  
[kingstonlettings@snellers.co.uk](mailto:kingstonlettings@snellers.co.uk)

Energy Rating: E We aim to make our particulars both accurate and reliable. However they are not guaranteed; nor do they form part of an offer or contract. If you require clarification on any points then please contact us, especially if you're traveling some distance to view. Please note that appliances and heating systems have not been tested and therefore no warranties can be given as to their good working order