



Borough Road, KT2

£1,895 PCM

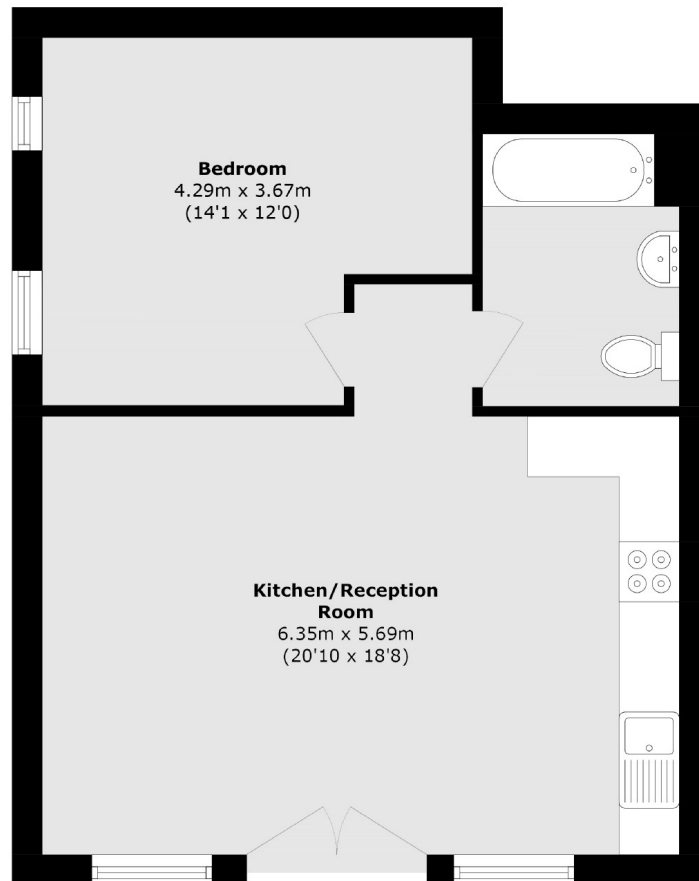
Spacious, modern one-bedroom apartment in a newly converted development. High ceilings, open-plan kitchen/living area, and finished to a high standard. Residents enjoy access to a communal roof terrace with stunning views.

Ideally located in the desirable North Kingston, on a quiet residential road, moments from Richmond Park, local shops, and Norbiton Station (Zone 5), with regular trains to London Waterloo, perfect for commuters seeking convenience and green spaces.

- Spacious One Bedroom • Modern Open-Plan Layout • High Quality Finish •
- Communal Roof Terrace • Prime North Kingston • Close To Transport •

SNELLERS

ESTATE AGENTS



Total area (approx.): 49.7 sq. m (534.9 sq. ft)

Snellers Kingston Lettings
17-21 Richmond Road
Kingston
KT2 5BW
020 8546 0505
kingstonlettings@snellers.co.uk

Energy Rating: C We aim to make our particulars both accurate and reliable. However they are not guaranteed; nor do they form part of an offer or contract. If you require clarification on any points then please contact us, especially if you're traveling some distance to view. Please note that appliances and heating systems have not been tested and therefore no warranties can be given as to their good working order