

SNELLERS

ESTATE AGENTS



Portsmouth Road, KT6

£2,295 PCM

This third floor apartment has incredible views and overlooks the Thames and Hampton Court Palace. It has two double bedrooms, a very large living room, separate kitchen, bathroom and extra W/C as well as secure allocated parking and plenty of storage throughout.

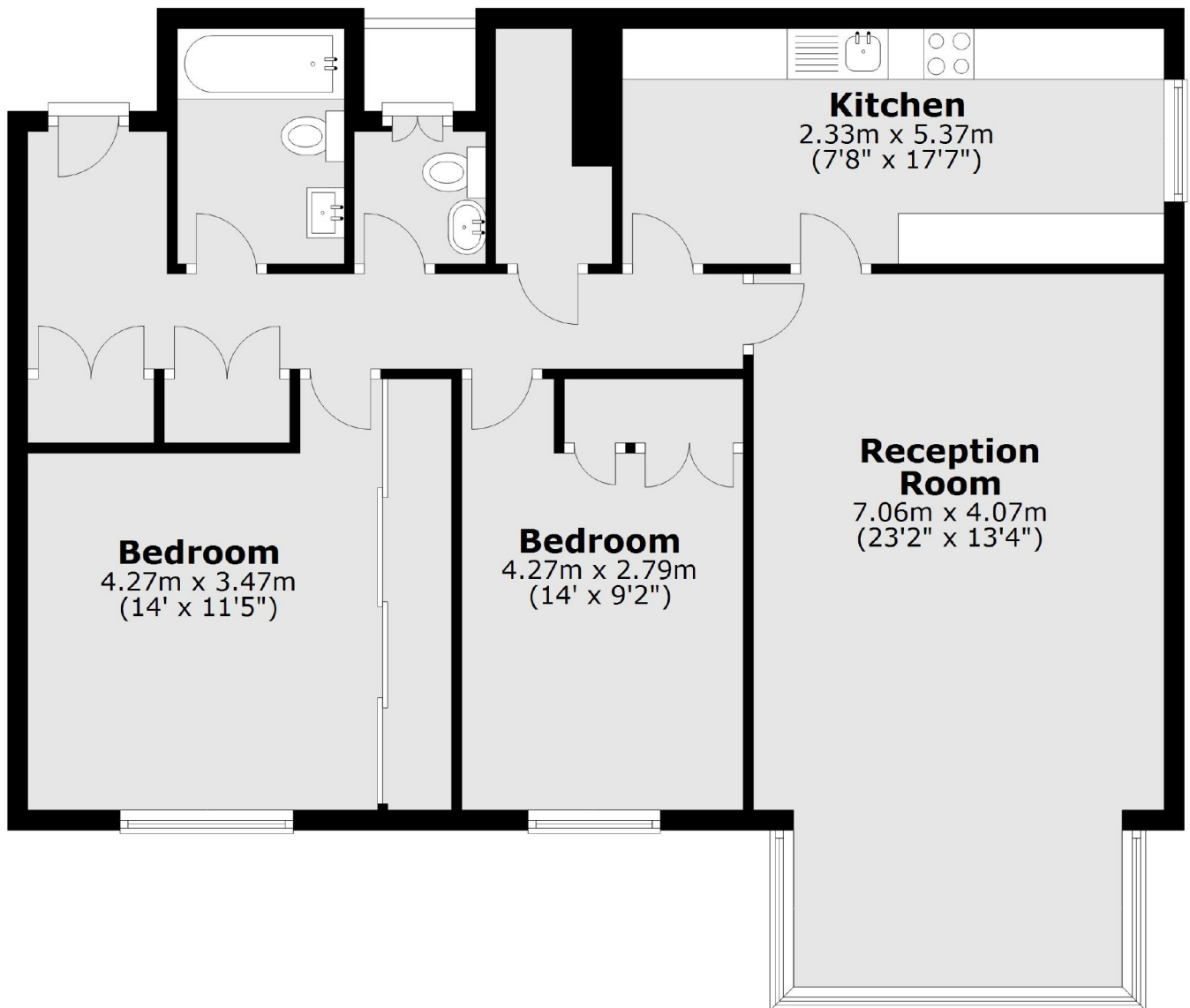


This apartment is ideally located for Surbiton Station and town centre, as well as an easy walk down the river into Kingston.

- Two Double Bedrooms • Large Reception Room • Separate Kitchen •
- Modern Bathroom • Amazing Views • Allocated Parking •



Third Floor



Total area: approx. 89.8 sq. metres (966.4 sq. feet)

Snellers Kingston Lettings
17-21 Richmond Road
Kingston
KT2 5BW
020 8546 0505
kingstonlettings@snellers.co.uk

Energy Rating: We aim to make our particulars both accurate and reliable. However they are not guaranteed; nor do they form part of an offer or contract. If you require clarification on any points then please contact us, especially if you're traveling some distance to view. Please note that appliances and heating systems have not been tested and therefore no warranties can be given as to their good working order